

Zxtech CCTV NVR: Motion Detection

domar.com

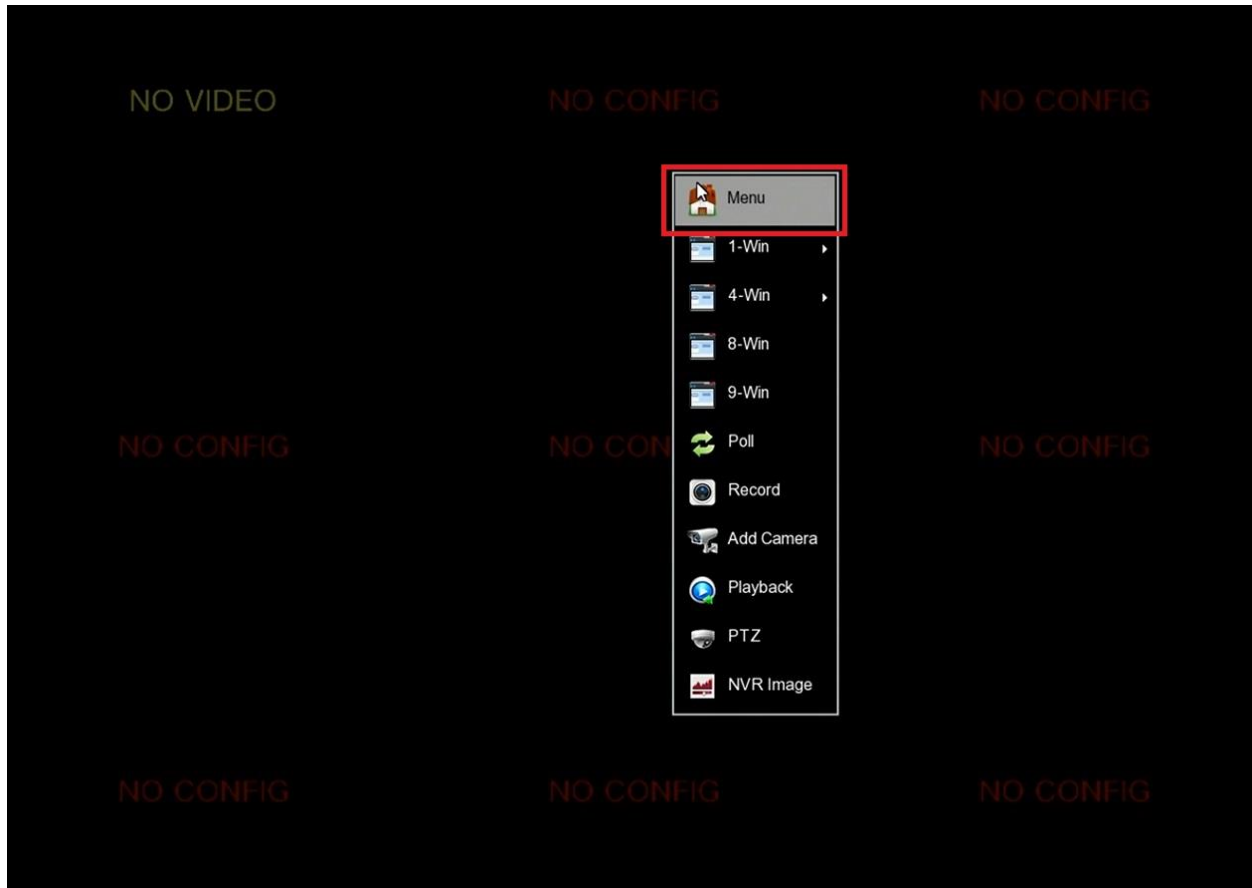


Contents

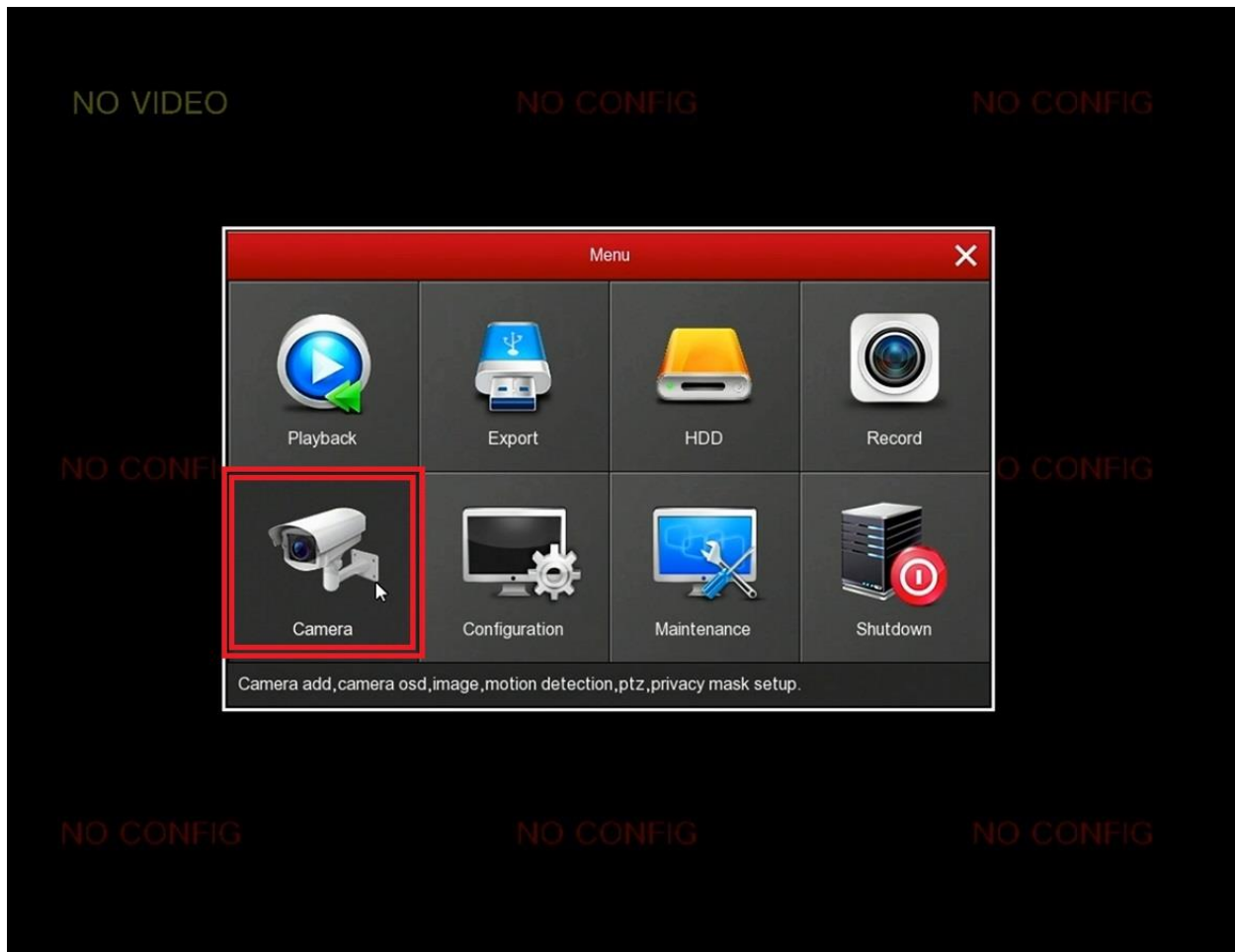
Camera Configuration	3
Configuring the Schedule	10

Camera Configuration

1. You will need to be logged into the recorder to follow these steps. Before starting, just log into the recorder, [right click](#) then select 'menu'.



2. The following window should pop up; Select 'Camera'.



3. Select 'Motion' from the 'Menu' on the left. This will bring up the following options; tick the option for 'Enable Detection'.

The screenshot shows the 'Camera Management' window with the 'Motion Detection' tab selected. The left sidebar contains a menu with options: Add Camera, OSD, Image, Motion (selected), PTZ, and Privacy Mask. The main panel displays the following settings:

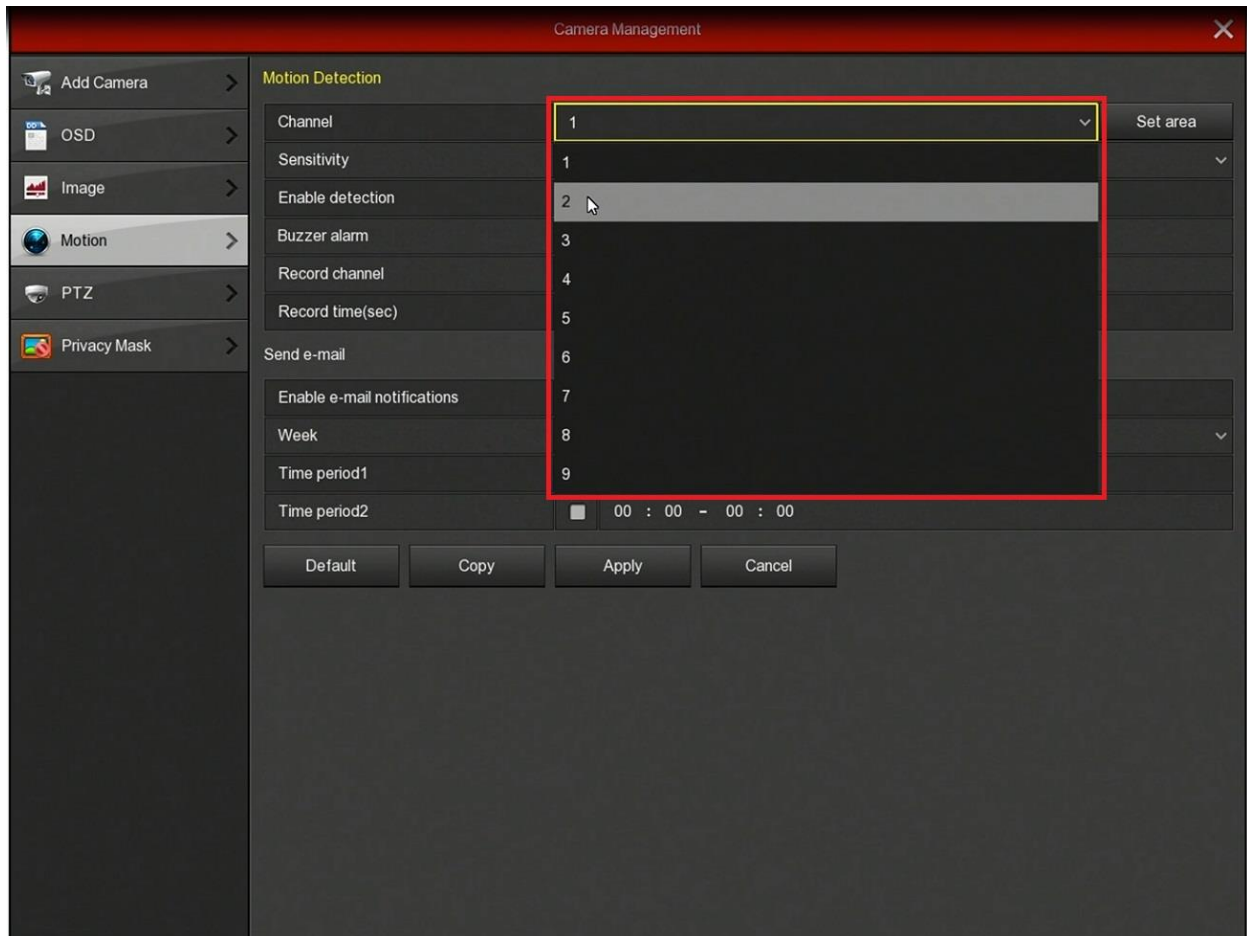
Setting	Value
Channel	1
Sensitivity	0
Enable detection	<input checked="" type="checkbox"/>
Buzzer alarm	<input type="checkbox"/>
Record channel	<input type="checkbox"/>
Record time(sec)	30

Below the main settings is the 'Send e-mail' section:

Setting	Value
Enable e-mail notifications	<input type="checkbox"/>
Week	Tues
Time period1	<input type="checkbox"/> 00 : 00 - 00 : 00
Time period2	<input type="checkbox"/> 00 : 00 - 00 : 00

At the bottom of the window are four buttons: Default, Copy, Apply, and Cancel.

4. Select 'Channel' and from the drop down menu, select which channel (camera) to edit the motion detection on. The settings can be copied and pasted to other channels (refer

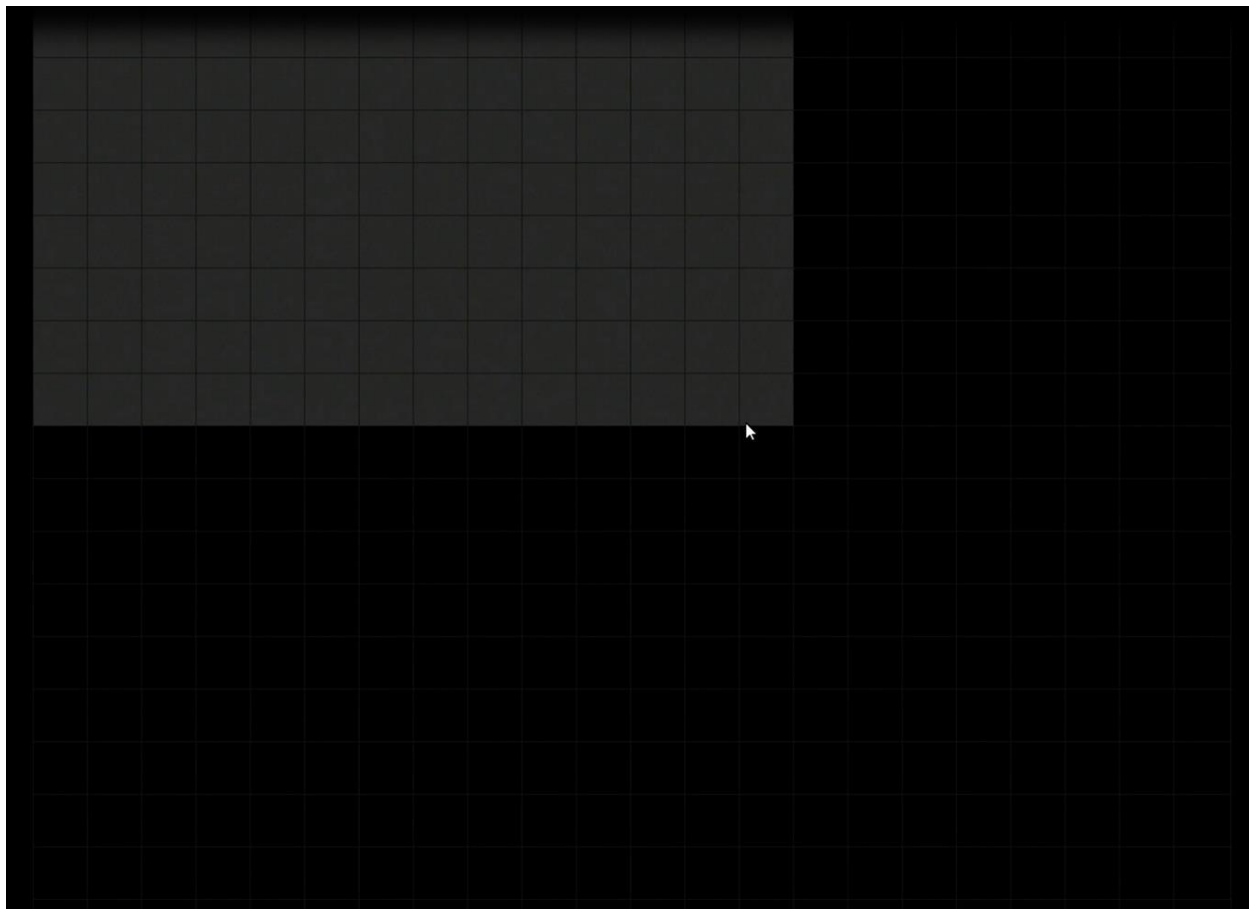


to step 8.).

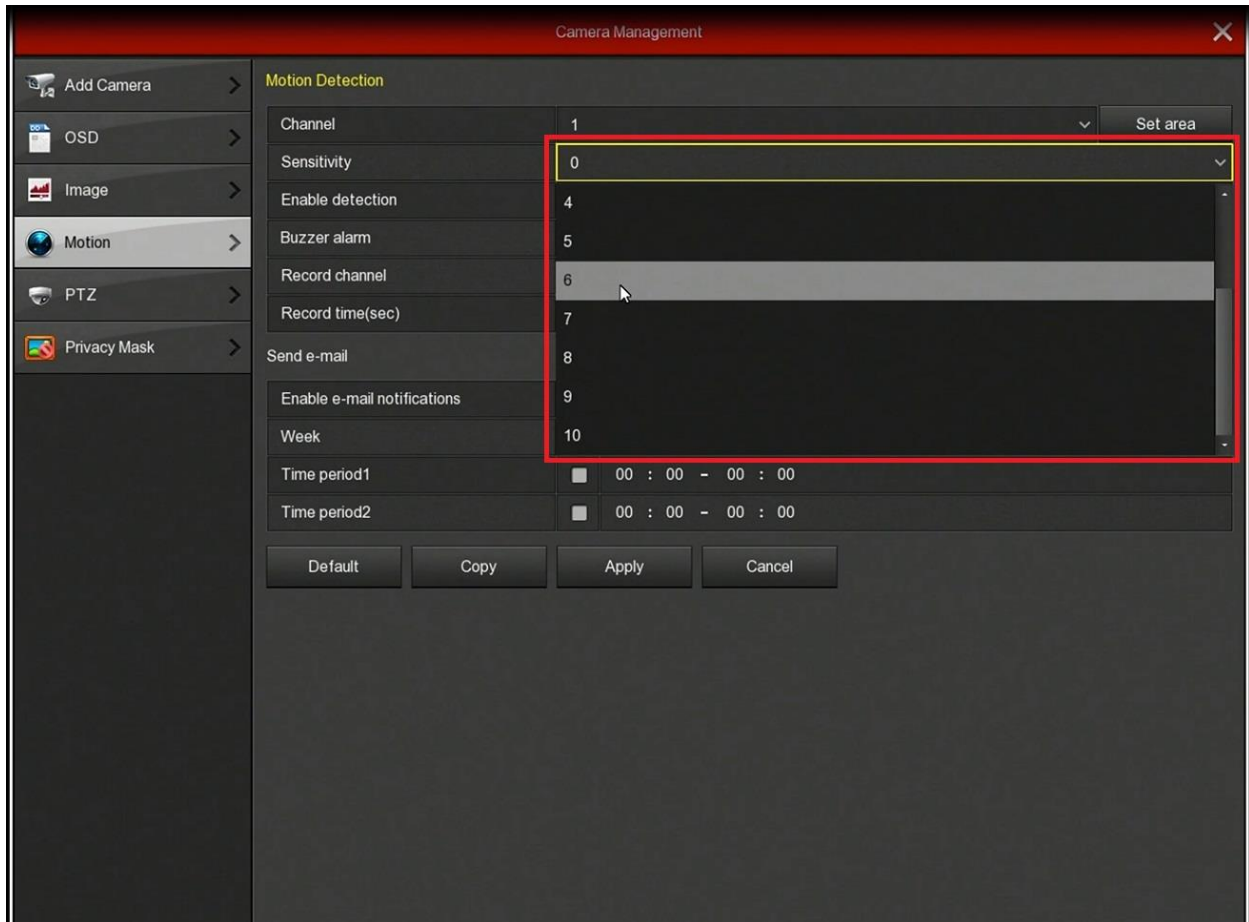
5. Select 'Set Area'; This will apply an **area** to record motion.



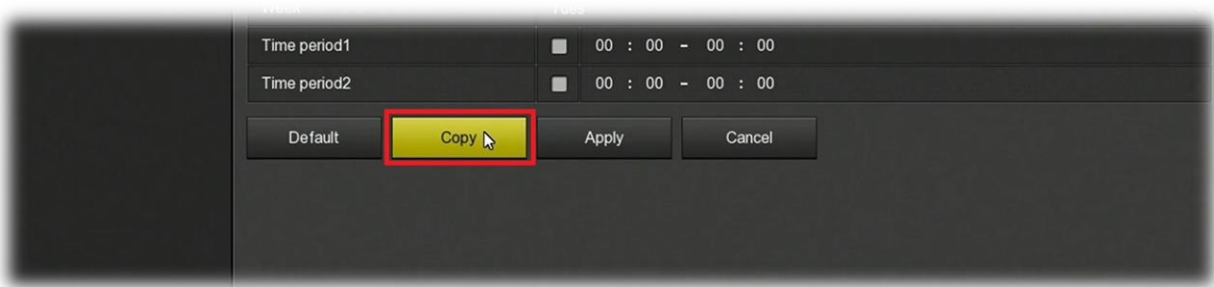
6. The following screen shall appear. **Left click** (hold) and **drag** the light grey area, on the spaces you wish to detect motion. **Right click** to exit this window.



7. Select '**Sensitivity**' to adjust how much motion is required to trigger the motion sensor. **10** is the highest (very sensitive), requiring very little motion to trigger the sensor. **1** is being the lowest (not very sensitive), requiring lots of movement to trigger the sensor. This may need some testing and experimenting to get the desired sensitivity.

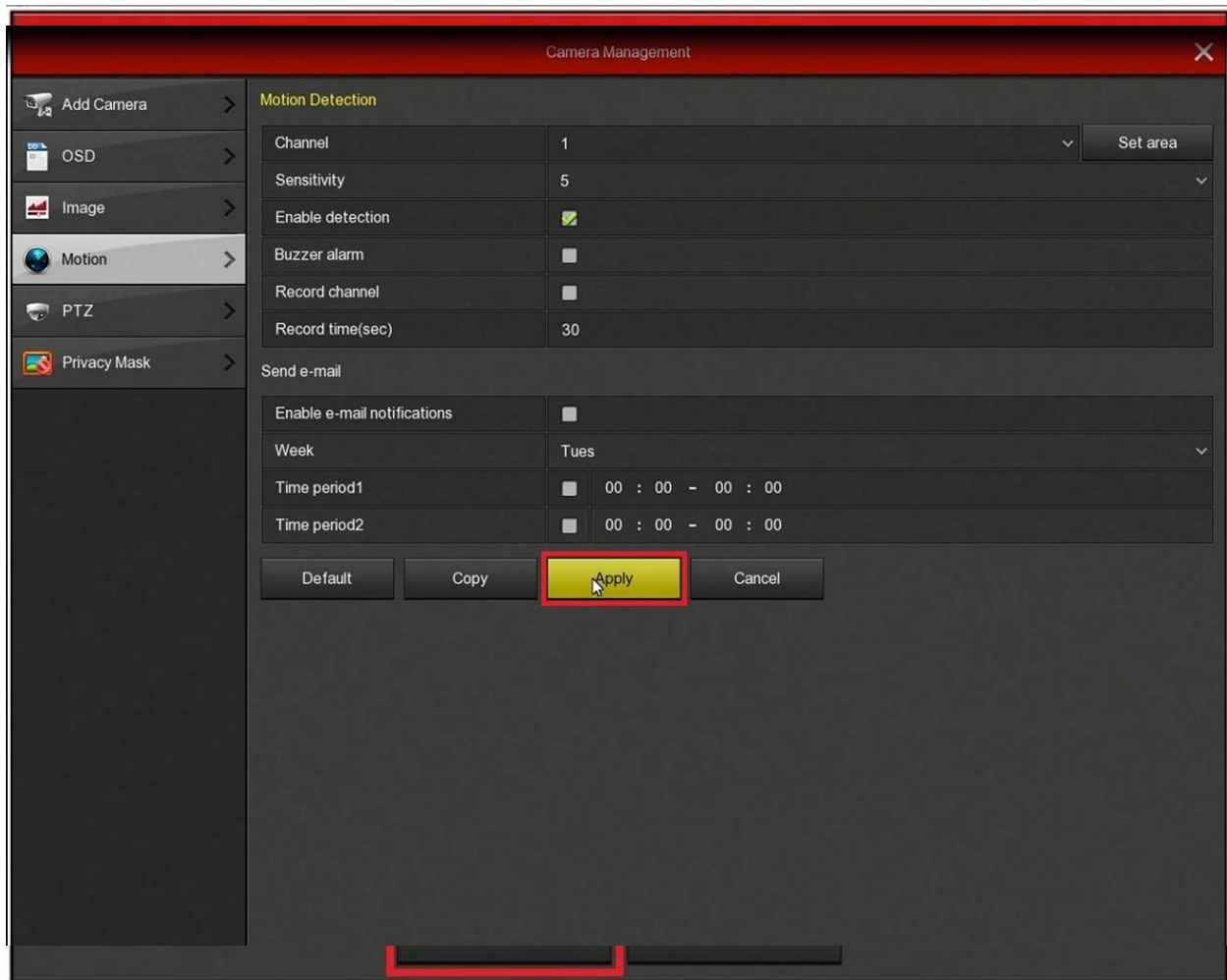


8. Select 'Copy' in order to apply the settings to other channels (cameras).



9. Select what 'Channel' (camera) to apply the settings to or select 'All'. Once you have picked the desired option, select 'Save'.

10. Select 'Apply' once you have finished your desired settings; Close the window.

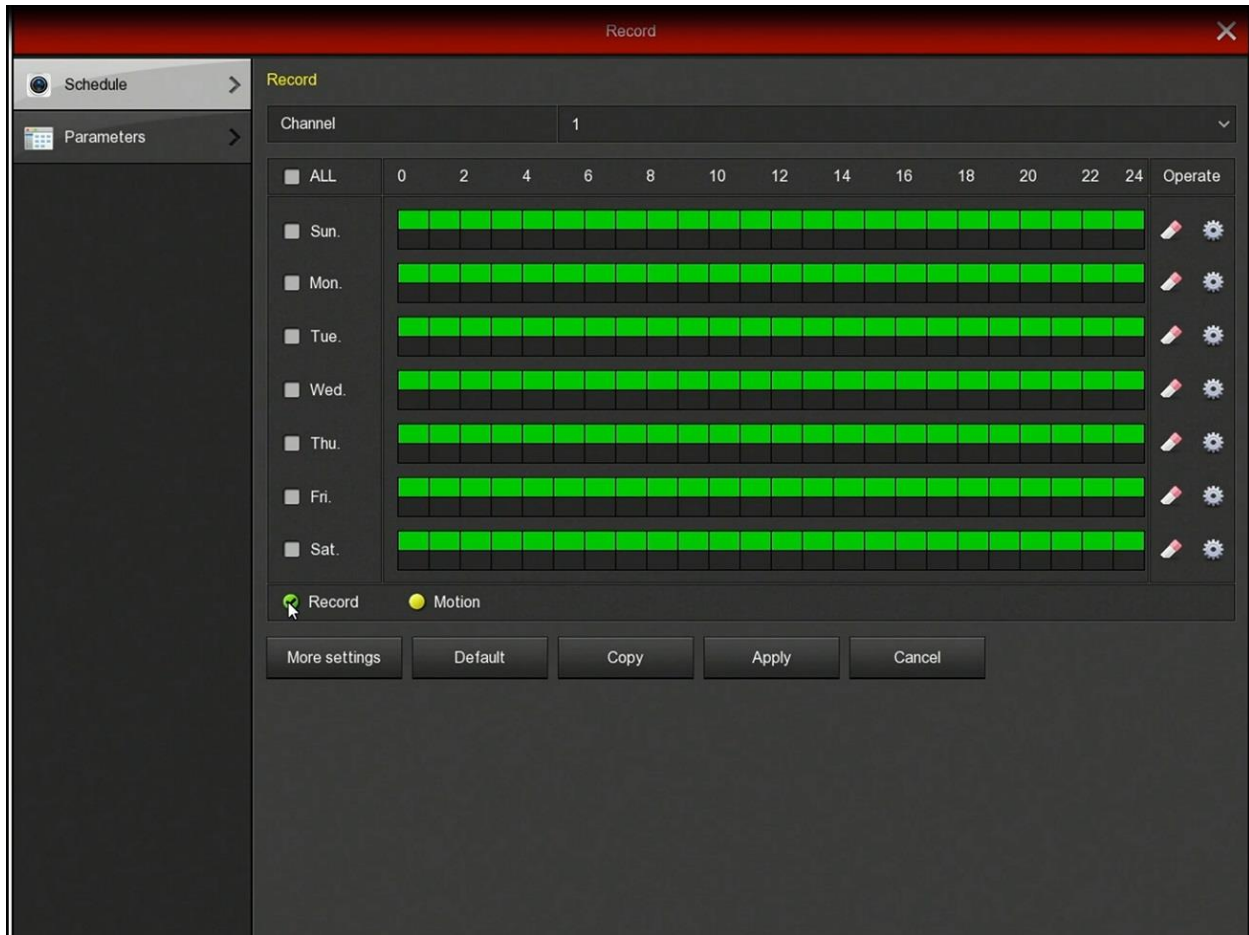



Configuring the Schedule

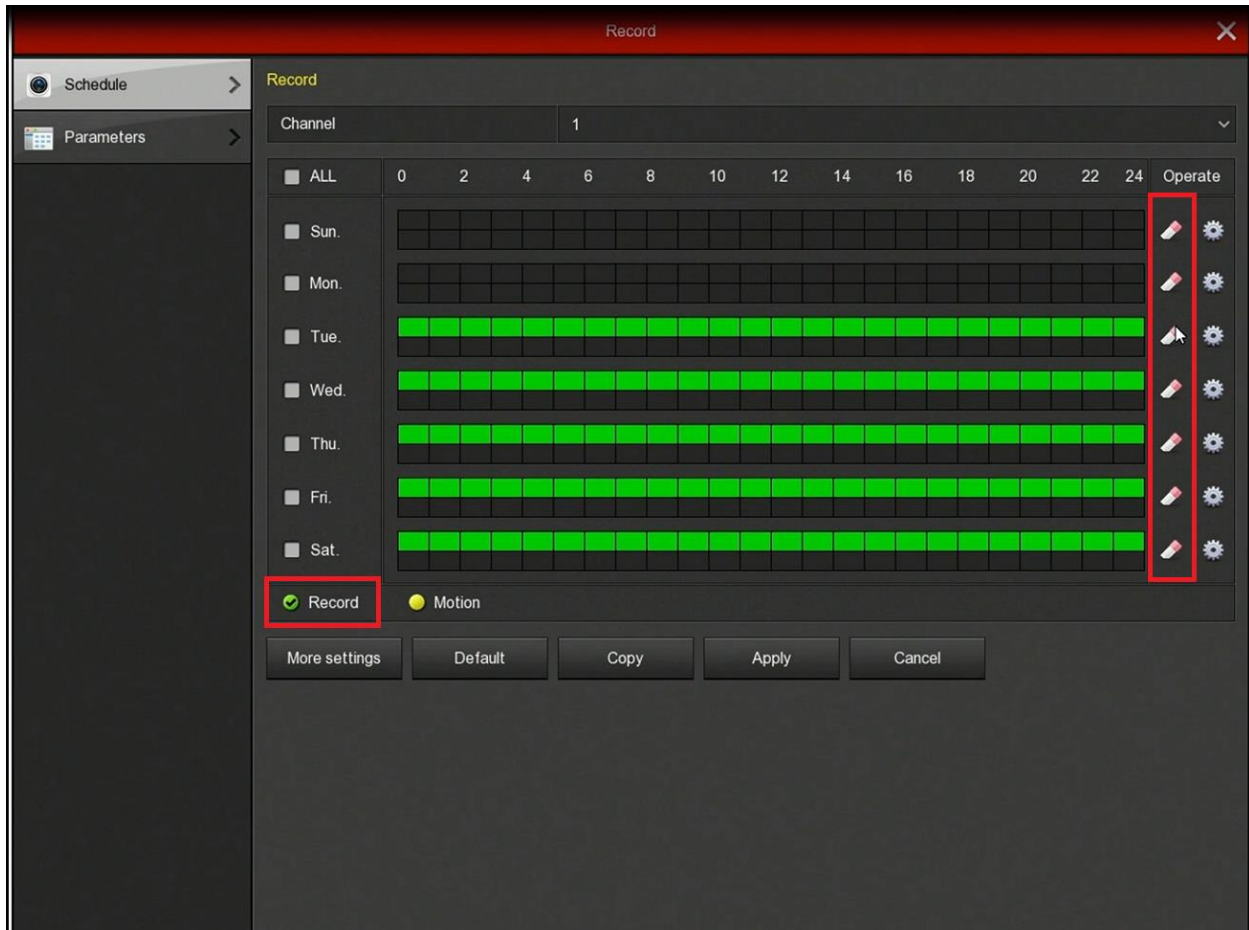
1. Return to the 'Main Menu' and select 'Record'.



2. The following window will display. Insure the 'Schedule' is selected from the left sub menu.



3. Make sure 'Record' is selected ; Left click the 'Eraser'  tool in order to remove the current settings. The default settings are set to constant record (green). This needs to be changed in order to enable the motion detection recording.



4. Once the settings are removed. Insure that the 'Motion' option is selected.



5. Select the **days** you wish to apply the settings to. Then **left click** and **drag** the mouse across for desired schedule. The left hand side are the **days**, the numbers at the top are the **hours**. Then click 'Apply' and the settings are **complete**.

