

Green HVRs & NVRs

Monitoring software: CMS

domar.com



Basic information

Download installation file using this link: [Green CMS](#).

Features:

- IP, domain and P2P connections,
- device grouping,
- password protection,
- remote live view (1-64 cameras),
- remote playback and backup.

Default username: **super**

Default password: **(none)**

Table of content

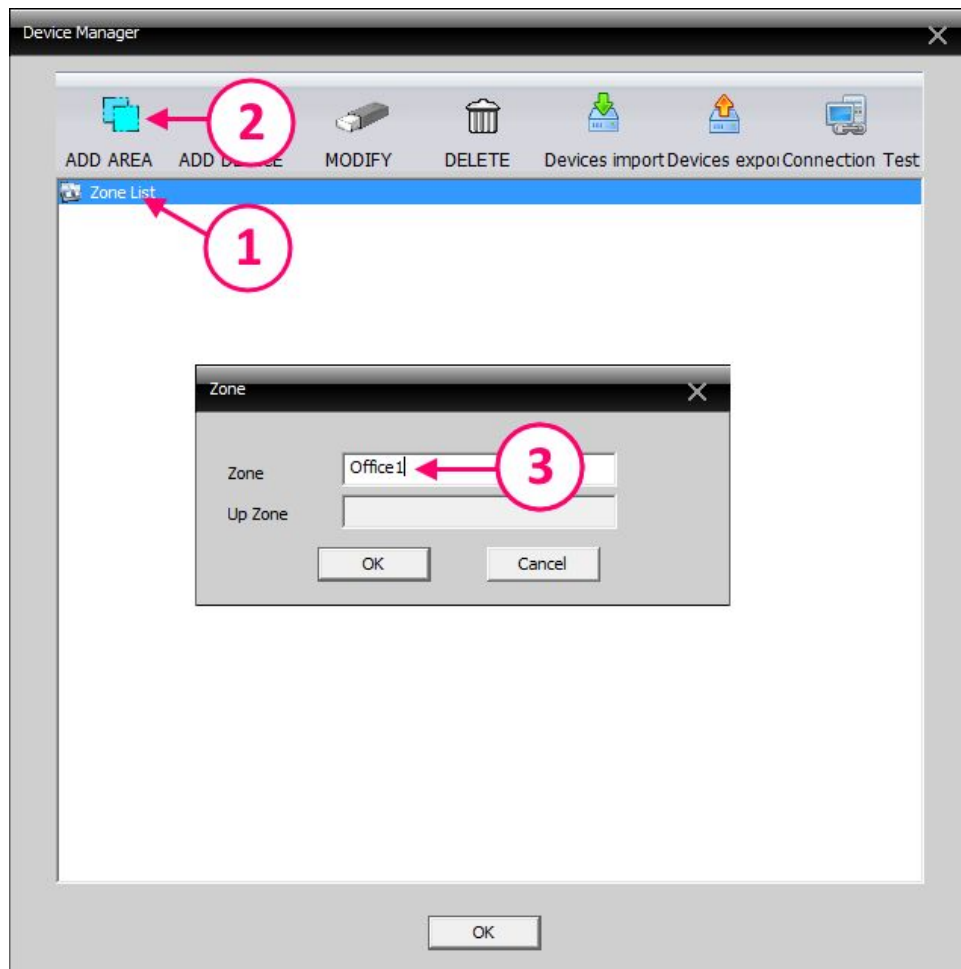
Adding device	3
Adding device from local network.	6
Adding device using serial number.	7
Adding device using IP address.	8
Live view	10
Playback & backup	12

Adding device

1. Click on '**System**' and then '**Device Manager**' in menu on the right side:

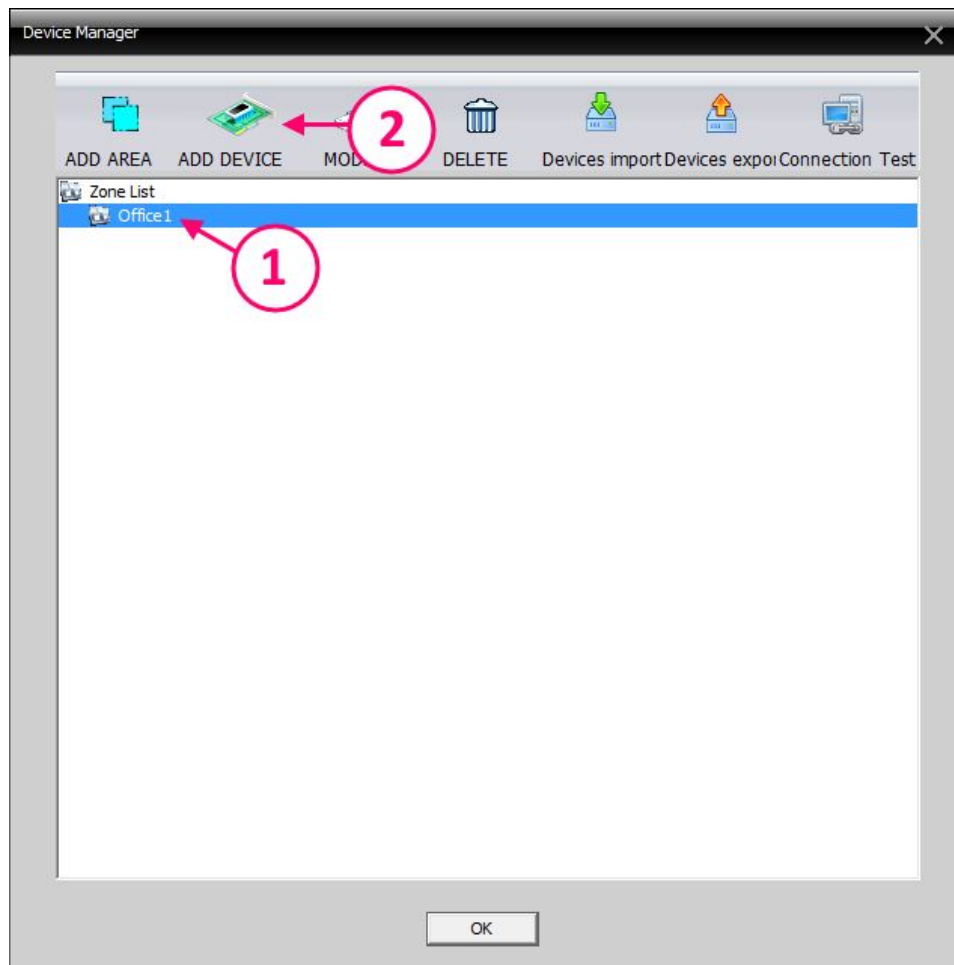


2. Add at least 1 area. Click on **'Zone List'** and then **'ADD AREA'**. Type in name and press **'OK'** button.



Tip: CMS software requires creating at least one zone. This step is only necessary if it's the first time you're adding a device to the CMS list.

3. Click on the name of created zone; buttons on top will become active. Click on '**ADD DEVICE**'.



4. Adding device from local network.

The 'Edit' dialog box contains a table with the following data:

NO.	IP Address	Port	MAC	Vendor
1	192.168.1.18	34567	00:12:12:0c:b4:c9	H264DVR
2	192.168.1.220	34567	00:12:13:2b:3f:d6	H264DVR
3	192.168.1.214	6543	00:12:16:f3:03:ed	H264DVR

Below the table, the 'IP Search' button is highlighted with a red circle labeled '1'. The second row of the table is selected with a red circle labeled '2'. The 'Device Name' field, which contains '192.168.1.220', is highlighted with a red circle labeled '3'. The 'Password' field is highlighted with a red circle labeled '4'.

1. Press 'IP Search' button.
2. Select (click on) device you want to add. CMS will fill details below.
3. Optional: Change content of 'Device name' field. This name will be displayed on device list.
4. Fill in 'Password' field. If your recorder doesn't have any password, leave this field empty.
5. Press 'OK' button.

Tip: Devices added this way will be accessible only from the local network (when your computer is connected to the same router as the recorder).

5. Adding device using serial number.

The 'Edit' dialog box contains the following elements:

- Table:** Columns: NO., IP Address, Port, MAC, Vendor.
- Buttons:** ShowAddedDevice, OnvifSearch, IP Search, IPV6Search, Add Device, Edit Device.
- Device Name:** DVR_2_P2Pconnection (labeled 1).
- LoginType:** IP Address, Domain, ARSP, Cloud (checked), IPV6 (labeled 2).
- Serial ID:** d59 :41 (labeled 3).
- User Name:** admin.
- Password:** (empty field, labeled 4).
- Zone:** Office1.
- Vendor:** H264DVR.
- Buttons:** OK, Cancel.

1. Optional: Change the content of 'Device name' field. This name will be displayed on device list.
2. Change 'Login Type' to 'Cloud' (tick it).
3. In 'Serial ID' enter serial no. of your recorder.
Tip: Where to find this serial no.? In recorder's menu go to **Main menu → Info → Version**. It'll be displayed in a row labeled 'SerialNo'.
4. Fill in 'Password' field. If your recorder doesn't have any password leave this field empty.
5. Press 'OK' button.

6. Adding device using IP address.

The screenshot shows a software window titled "Edit" with a close button (X) in the top right corner. At the top is a table with five columns: "NO.", "IP Address", "Port", "MAC", and "Vendor". Below the table are several buttons: "ShowAddedDevice", "OnvifSearch", "IP Search", "IPV6Search", "Add Device", and "EditDevice". The main form contains the following fields and controls:


- Device Name:** A text box containing "DVR_3_Ext_IP".
- LoginType:** A group box containing four checkboxes: "IP Address" (checked), "Domain", "ARSP", and "Cloud". There is also an "IPV6" checkbox.
- IP Address:** A text box containing "91 . 239 . 152 . 136".
- Port:** A text box containing "34567".
- User Name:** A text box containing "admin".
- Password:** A text box containing masked characters "*****".
- Zone:** A text box containing "Office1".
- Vendor:** A dropdown menu showing "H264DVR".

At the bottom are "OK" and "Cancel" buttons. Five red circles with numbers 1 through 5 are overlaid on the form, with arrows pointing to specific fields: 1 points to "Device Name", 2 points to "LoginType", 3 points to "IP Address", 4 points to "Port", and 5 points to "Password".

1. Optional: Change content of 'Device name' field. This name will be displayed on the device list.
2. Make sure that 'Login Type' is set to 'IP Address' (tick it).
3. In 'IP Address' put in the external IP address of your network or local IP address of your recorder.

Tip: Remote connections (from different network) using IP address will work only if ports on the router are open. More information about port forwarding can be found here: [LINK](#).

4. Fill in 'Port' field. Default port no. is 34567. If you changed the media port no. in the recorder's network settings; use it instead.

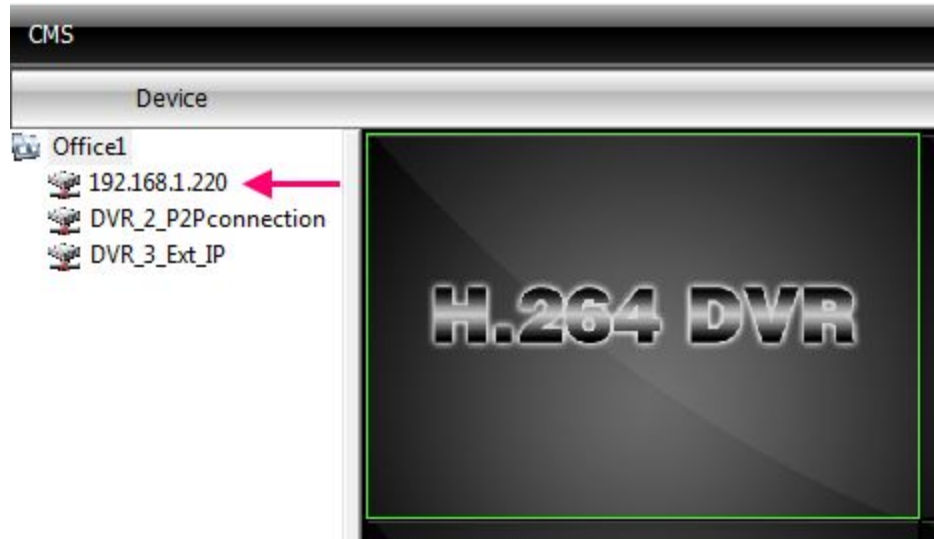


Tip: Where to find port no.? In the recorder menu go to **Main menu → System → Network**.

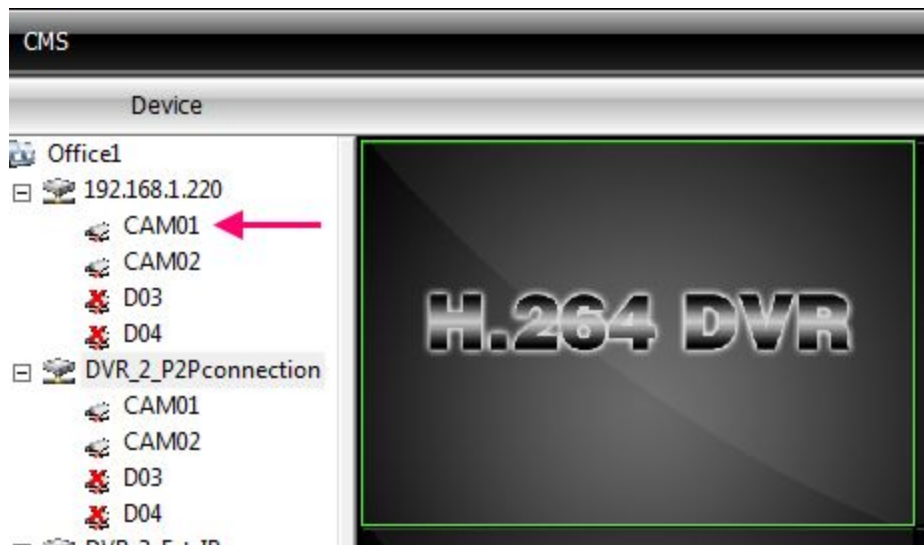
5. Fill in 'Password' field. If your recorder doesn't have any password; leave this field empty.
6. Press 'OK' button.

Live view

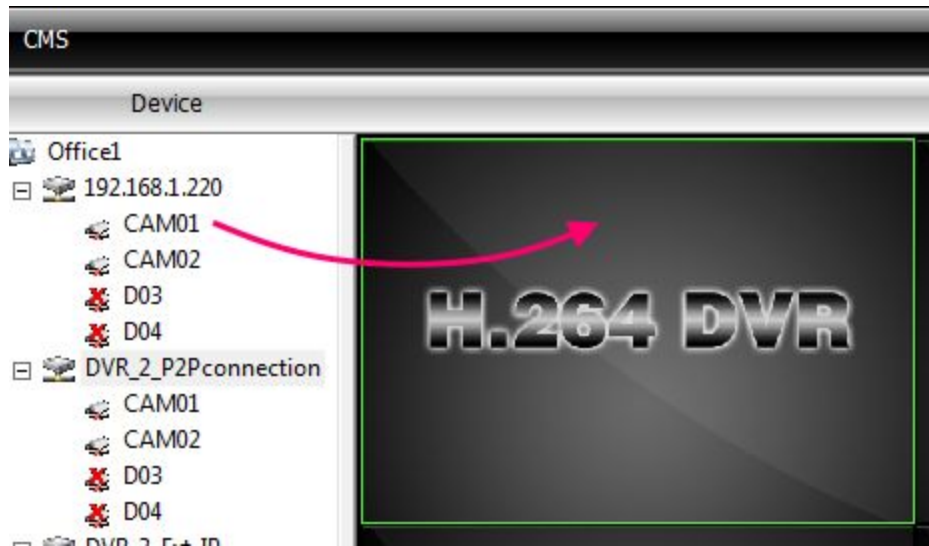
1. Connect to your recorder - double click recorder's name on device list:



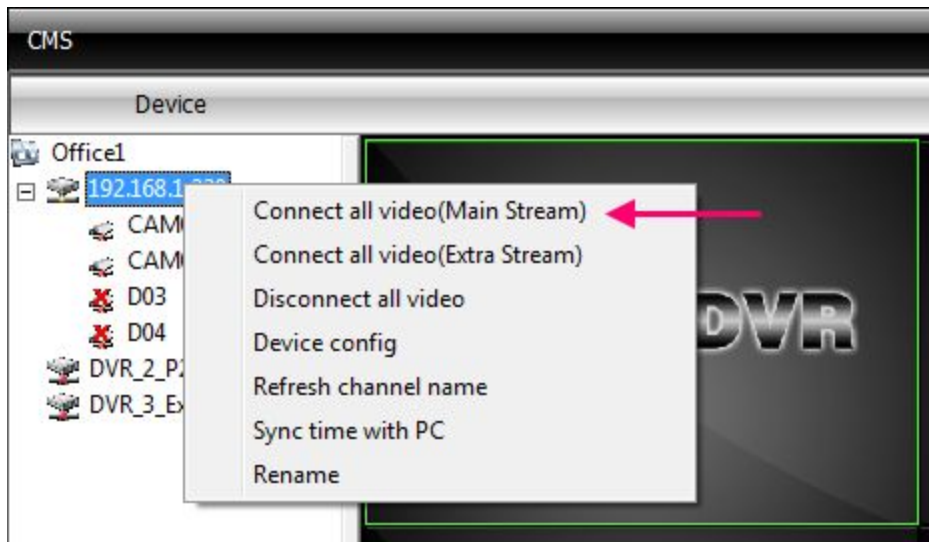
2. When CMS software connects to the recorder, it'll list cameras below device name. To play video either:
 - a. double click camera no., video will play in preview window with green border,



- b. or drag and drop camera. onto one of preview windows,



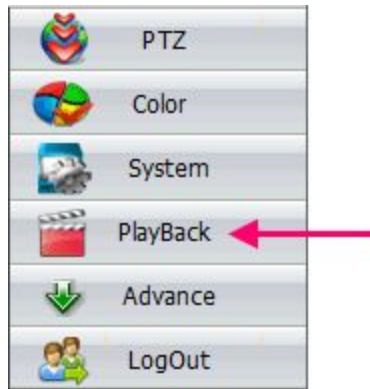
- c. or right-click device name and choose option 'Connect all video (Main / Extra Stream)'.



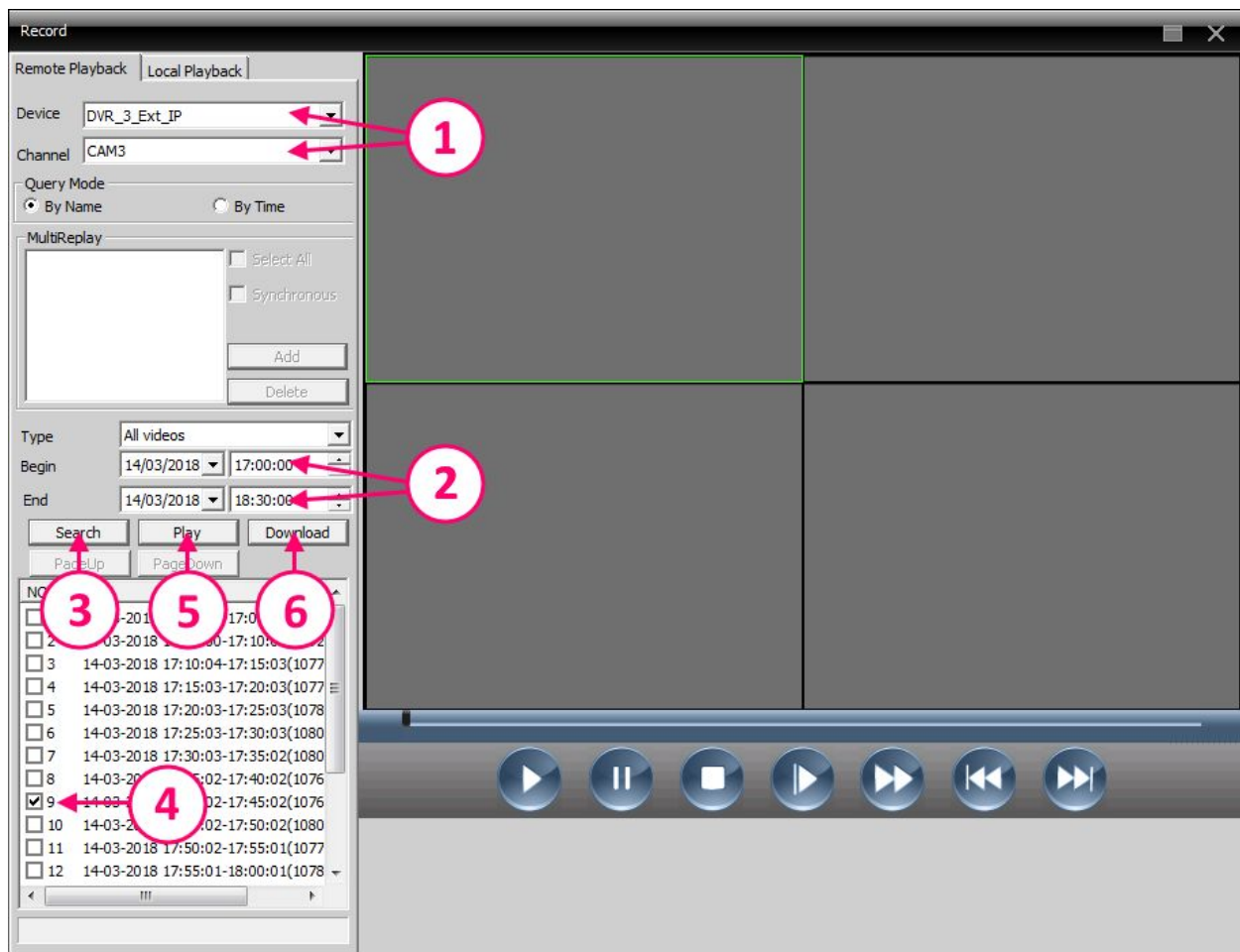
3. To switch video stream off, either:
- a. right-click preview window (with video playing) and choose 'Close window' or 'Close all windows',
 - b. or right-click recorder's name on device list and choose 'Disconnect all videos',
 - c. or double-click playing camera's name on device list.

Playback & backup

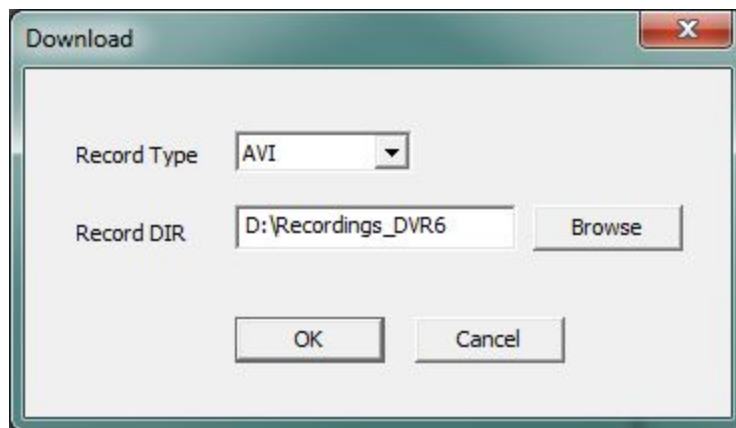
1. Connect to your recorder - double click recorder's name on device list.
2. Click 'PlayBack' button in menu on the right side:



3. In 'Record' window:



1. select 'Device' - recorder you want to access playback from and 'Channel' - camera's number,
2. specify 'Begin'/'End' - date and time range you wish to display recordings from,
3. press 'Search',
4. select (tick) file/files you want to preview/download,
5. press 'Play' to preview selected recorded file,
Tip: you can double-click file on the list instead.
6. or press 'Download' to start backup onto your computer's hard drive. Specify where you want file/files to be saved ('Record DIR', click 'Browse' button) and file format ('Record Type': H264 or AVI):



Tip: 'Record Type': AVI format is more versatile than H264. Use AVI to be able to play downloaded file on any computer. To play H264 files download H264 Player [HERE](#).