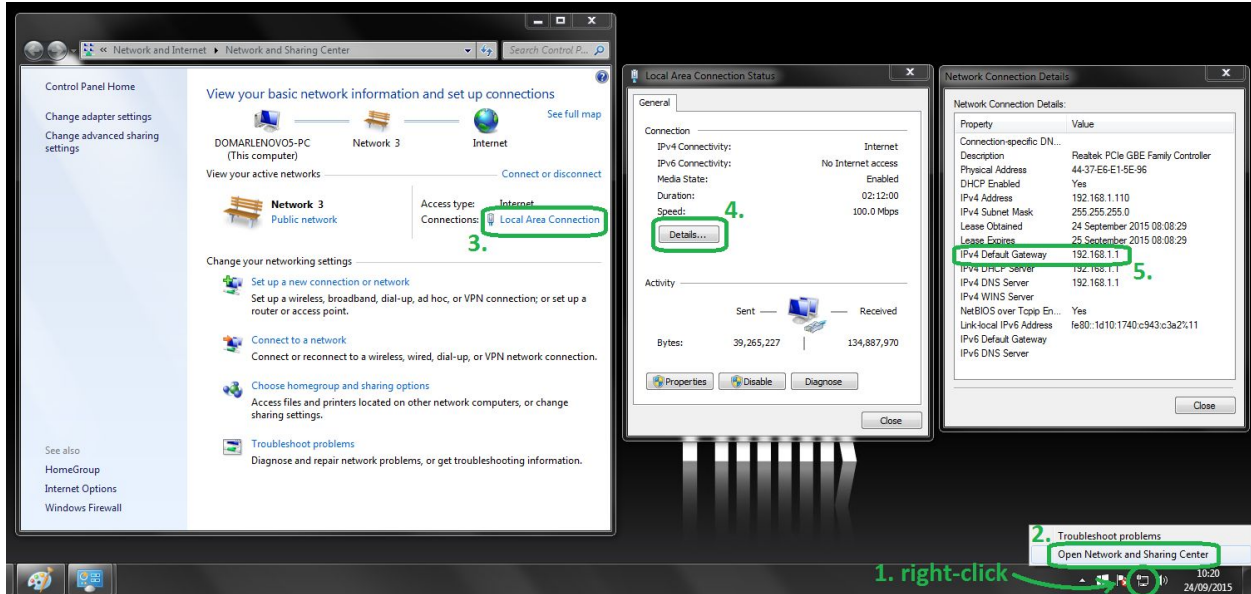


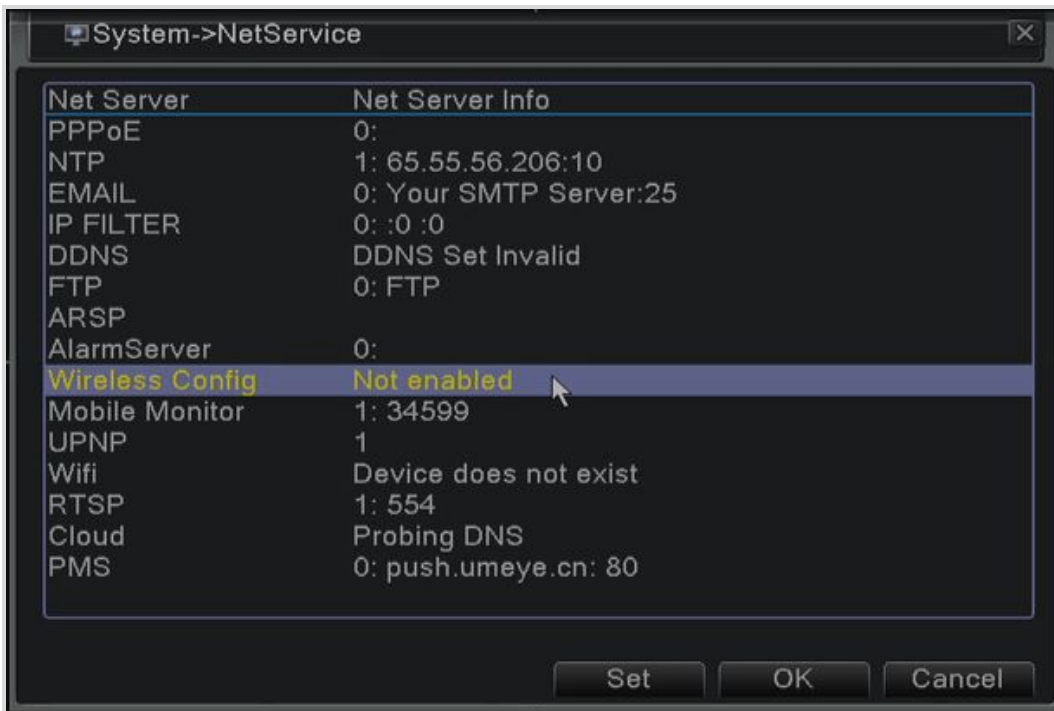
How to set up wifi on GREEN HVR/DVR

1. Find out what is the default gateway (router IP address) in local network where HVR will be connected:



2. Change the setting on the HVR:

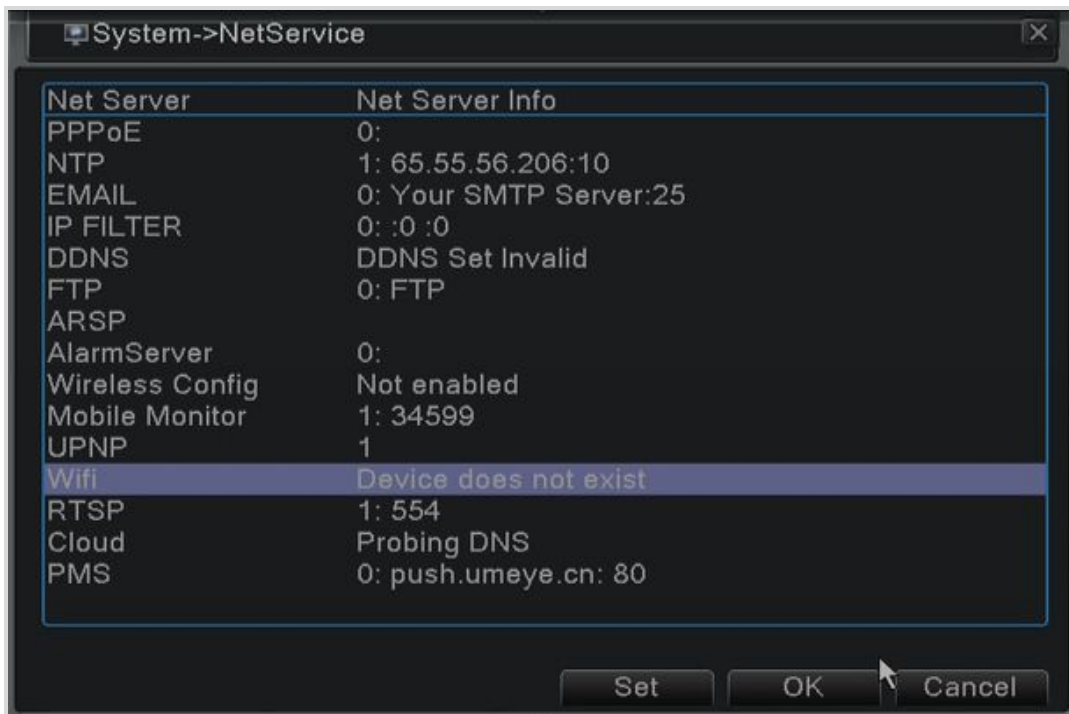
Main menu -> System -> NetService -> Wireless Config



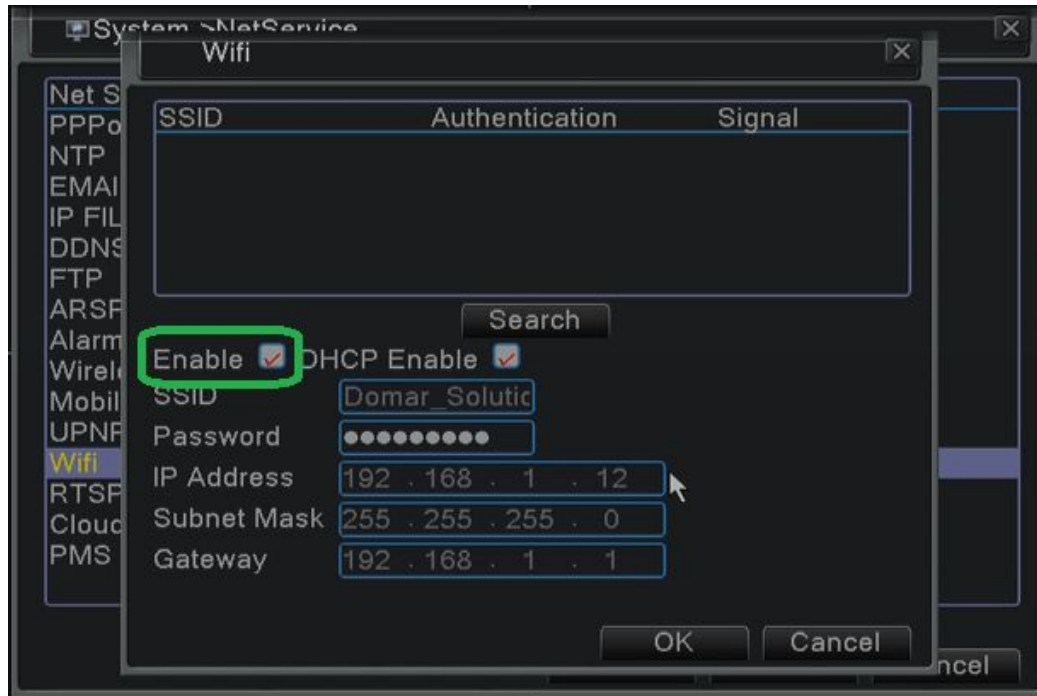
It has to state: **Not enabled**. If it showing you something different - double click it (or select **Wireless Config** and press **Set** button) and disable it - untick **Enable** field.



Main menu -> System -> NetService -> Wifi



Double click it (or select **Wifi** and press **Set** button) and enable it - tick **Enable** field. You can enable **DHCP** as well.



Important information: when you change settings in any window opened from **NetService**, you have to press **OK** button in window you are now and **OK** in **NetService** window as well to save this settings.

3. Plug wifi dongle to the USB port at the back, and then reboot HVR:

Main menu -> Logout -> Reboot

4. Check if dongle is recognised by HVR:

Main menu -> System -> NetService -> Wifi

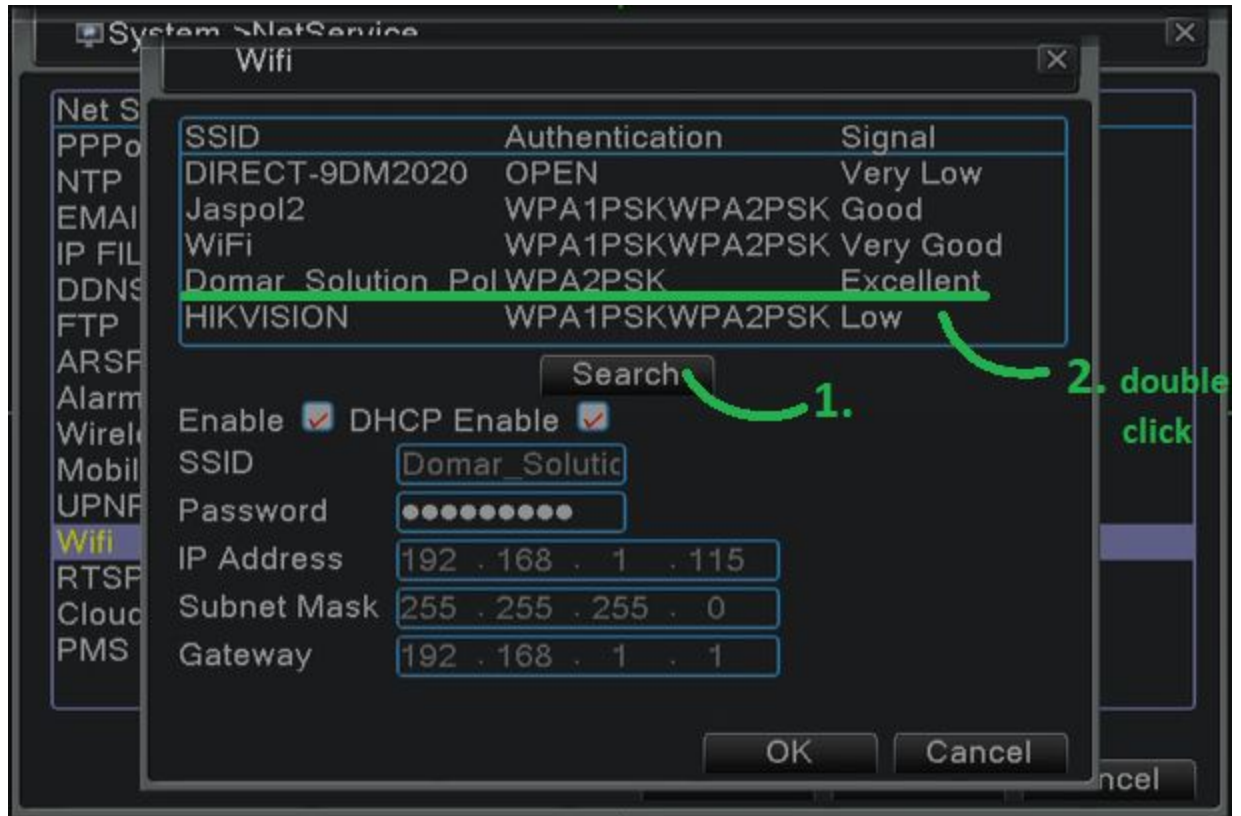
If it states:

- **Device does not exist** - try another USB port (remember about rebooting after plugging dongle in).
- **Not connected** - now recorder recognised wifi dongle and you can proceed to setting up wifi connection.

5. Set up wifi details:

Main menu -> System -> NetService -> Wifi

Press **Search** button and after a while you should be able to see list of wifi networks it found. Double click your wifi name to choose it.



HVR will fill **SSID** field automatically then and you need to put in your wifi password in **Password** field.

Disable **DHCP** if you had it ticked and change settings below to:

- **IP Address:** IP address matching your network
General rule: 3 first numbers in IP address should be the same as router IP address (gateway), last number should be different for each device.
Example: router 192.168.0.1 - recorder 192.168.0.200, router 192.168.1.1 - recorder 192.168.1.200.
- **Subnet Mask:** 255.255.255.0
- **Gateway:** your router IP address

Save this settings - please remember about pressing **OK** in **NetService** window as well.

6. Reboot HVR:

Main menu -> Logout -> Reboot

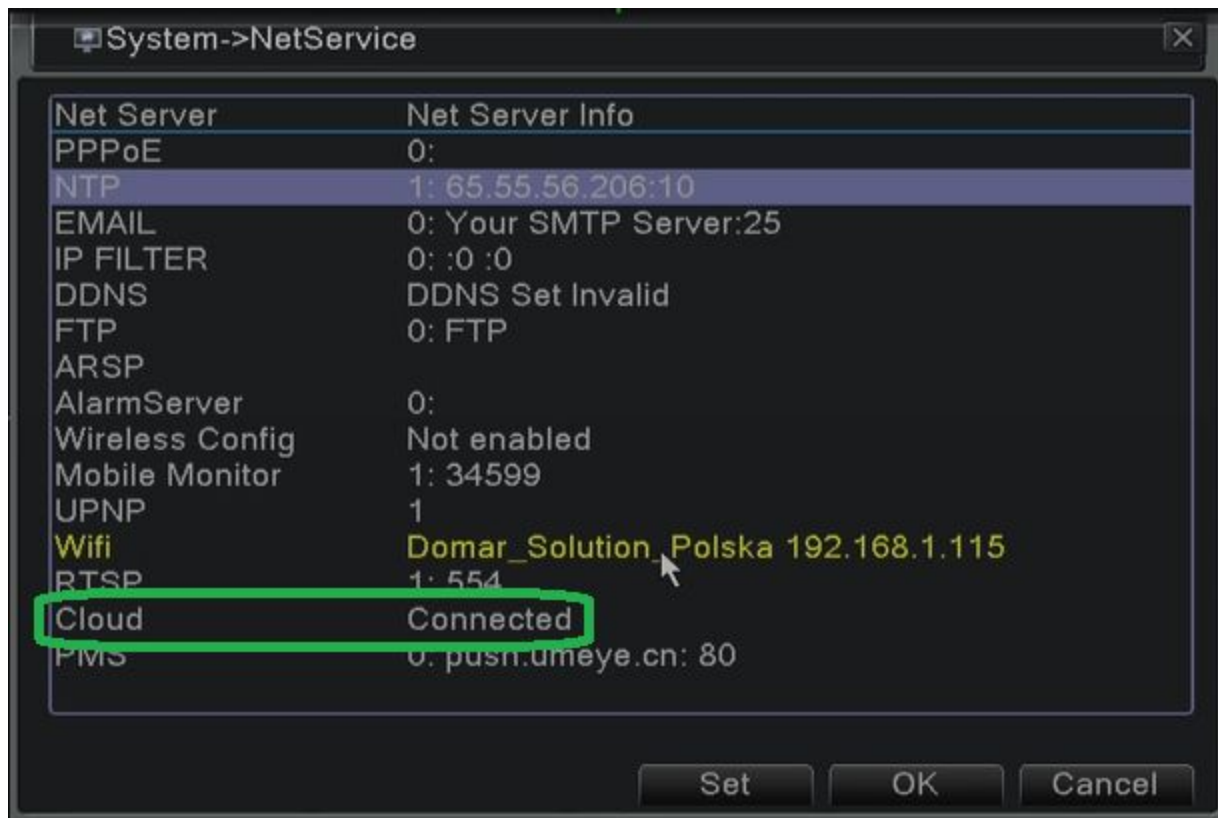
7. Check if HVR connected to your wifi:

Main menu -> System -> NetService -> Wifi

If it states:

- **Not connected** - go back to step 5 and check password and rest of the settings.
- **Wifi_network_name** - HVR is connected. Hurray!

Now you can check in **Cloud** row what's the status of connection to the mobile app server:



If it states:

- **Probing DNS** - HVR is now connecting.
- **Connected** - HVR connected to this server and you will have access to live view from mobile app.