

Zxtech Mini / Graphite NVRs

VMS software guide

domar.com



Table of contents

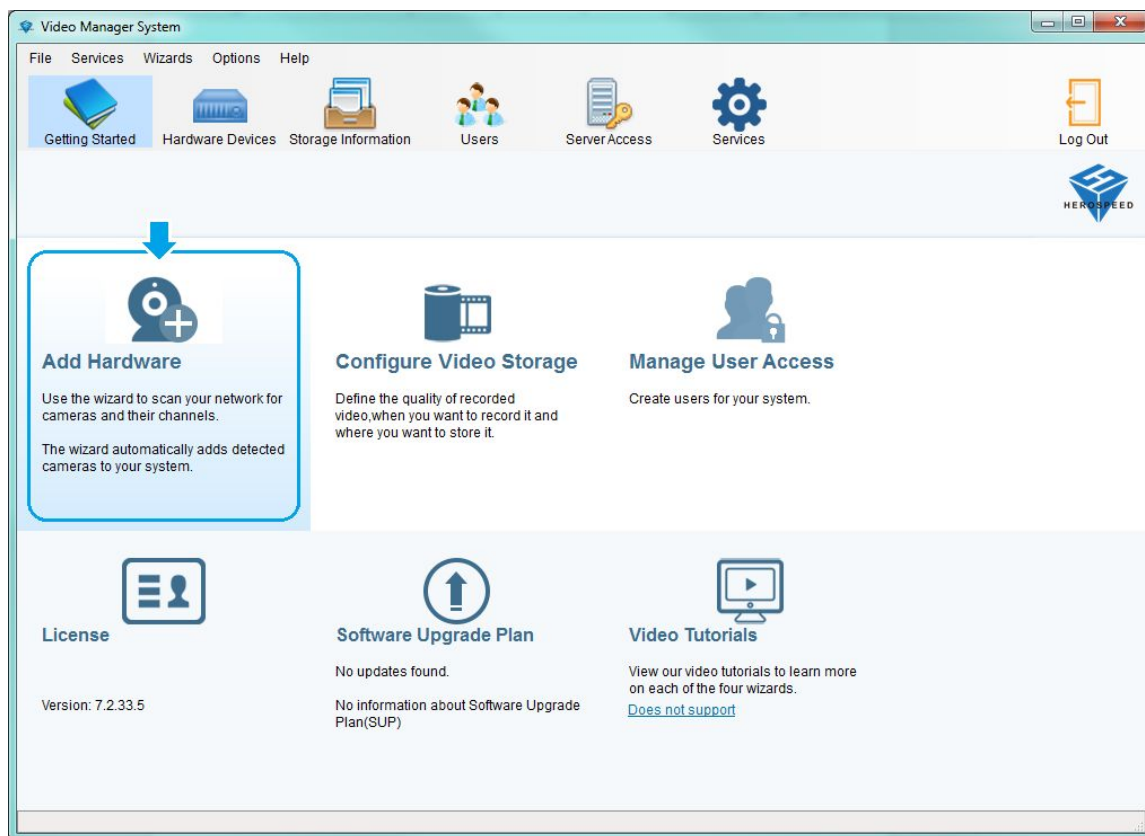
1. Adding CCTV devices to VMS software	3
1.1 Scanning network for devices	4
1.2 Adding device manually using IP address	6
1.3 Adding device manually using serial number	9
2. Live preview	13
3. Playback and backup	15

1. Adding CCTV devices to VMS software

A. Start **VMS Management** software:



B. Log in and choose '**Add Hardware**' option:



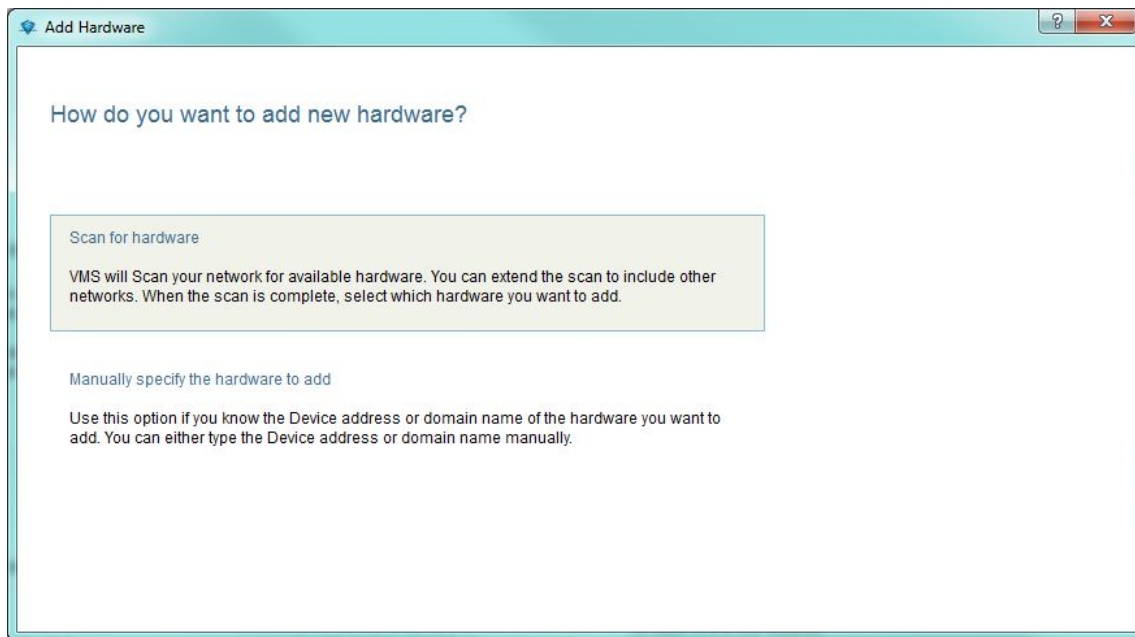
You can add new device either:

- [by scanning local network \(1.1\).](#)
- [manually, using its IP address \(1.2\).](#)
- [manually, using its serial number \(1.3\).](#)

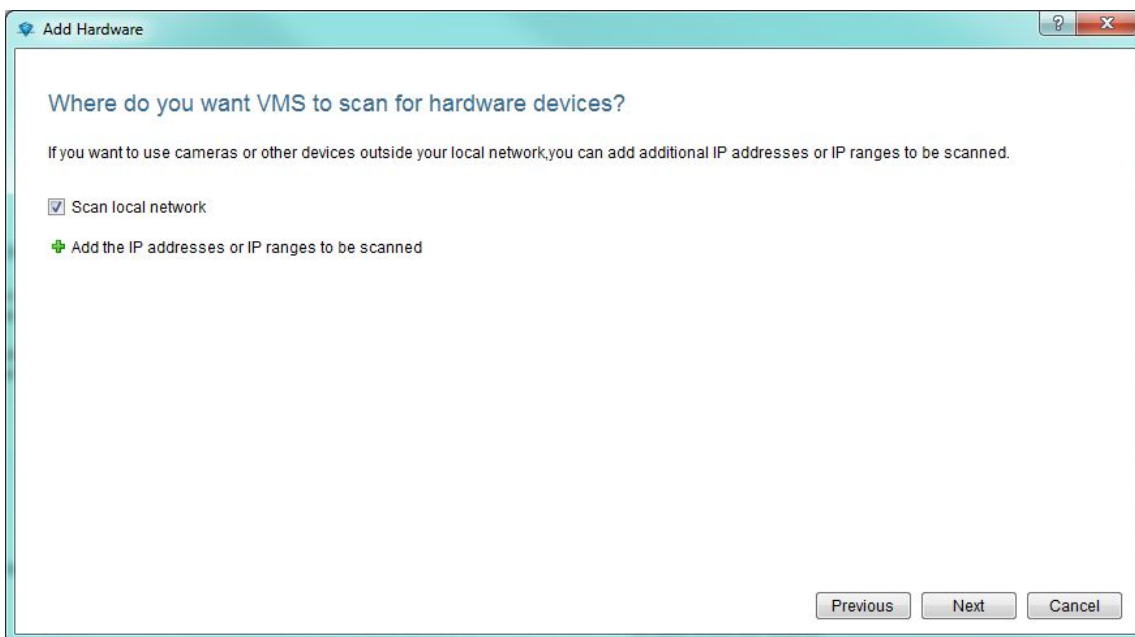
1.1 Scanning network for devices

Note: This function is only available if computer with VMS software is connected to the same network as CCTV device.

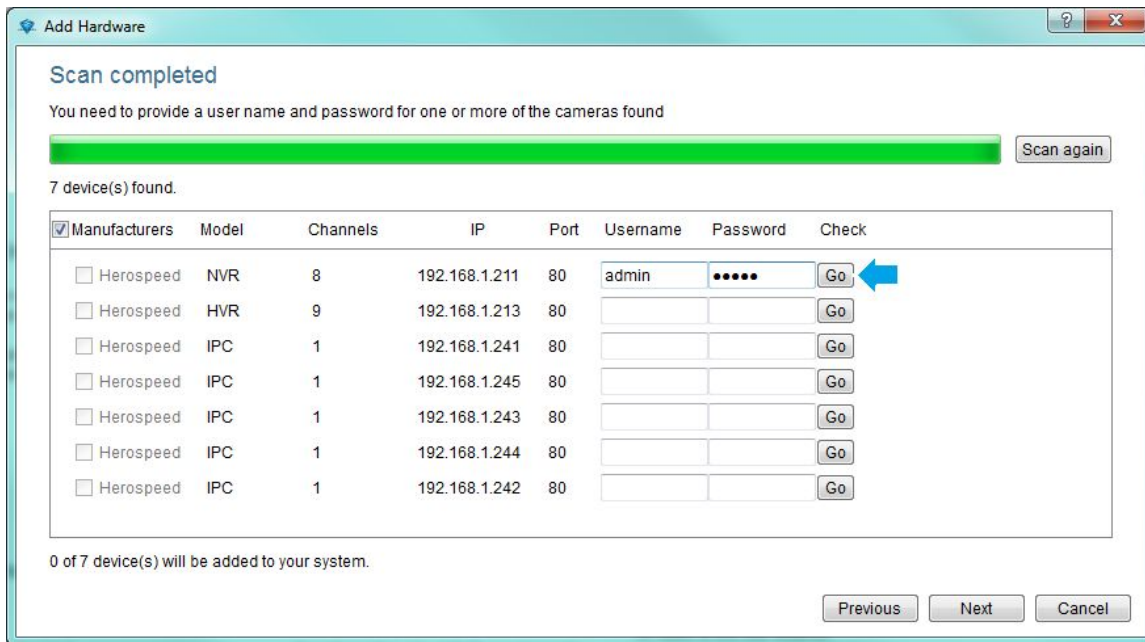
C. Select '**Scan for hardware**' option:



Make sure '**Scan local network**' option is enabled and press '**Next**':



- D. Find your recorder (Model: NVR / HVR) or camera (IPC) on the list, fill in login details '**Username**' and '**Password**' for each device (default username / password for recorders is **admin / 12345** and **admin / admin** for cameras) and press '**Go**' button for each device you wish to add to VMS software. Then save it by proceeding to the next step - '**Next**' button:



Add Hardware

Scan completed

You need to provide a user name and password for one or more of the cameras found

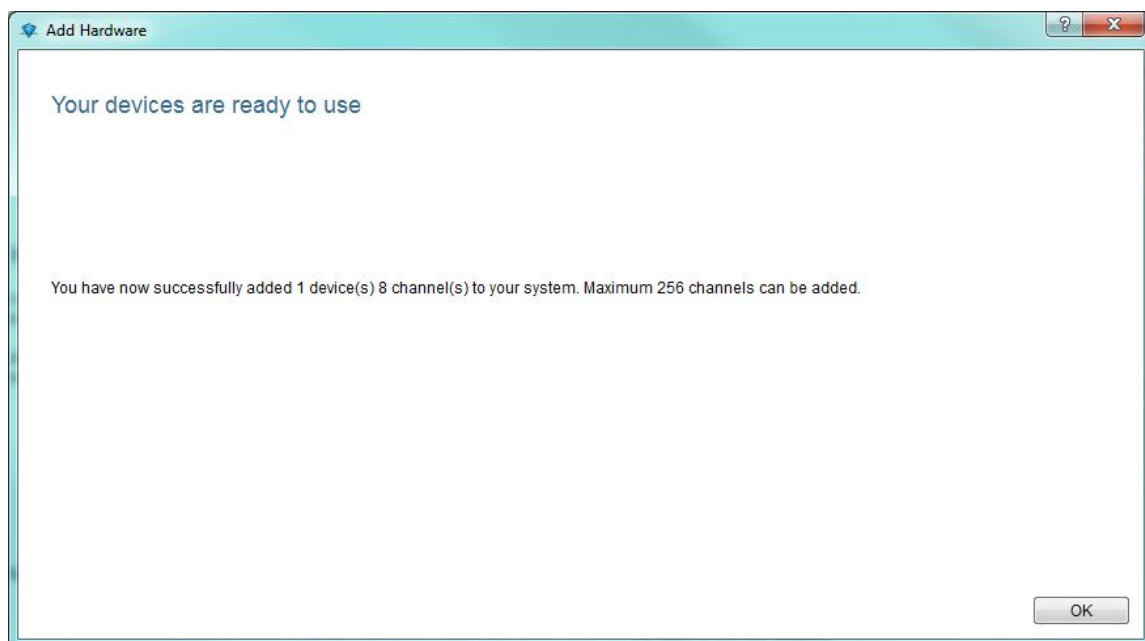
7 device(s) found.

<input checked="" type="checkbox"/> Manufacturers	Model	Channels	IP	Port	Username	Password	Check
<input type="checkbox"/> Herospeed	NVR	8	192.168.1.211	80	admin	Go
<input type="checkbox"/> Herospeed	HVR	9	192.168.1.213	80			Go
<input type="checkbox"/> Herospeed	IPC	1	192.168.1.241	80			Go
<input type="checkbox"/> Herospeed	IPC	1	192.168.1.245	80			Go
<input type="checkbox"/> Herospeed	IPC	1	192.168.1.243	80			Go
<input type="checkbox"/> Herospeed	IPC	1	192.168.1.244	80			Go
<input type="checkbox"/> Herospeed	IPC	1	192.168.1.242	80			Go

0 of 7 device(s) will be added to your system.

Previous Next Cancel

Close the wizard window with '**OK**' button after '**Your device are ready to use**':



Add Hardware

Your devices are ready to use

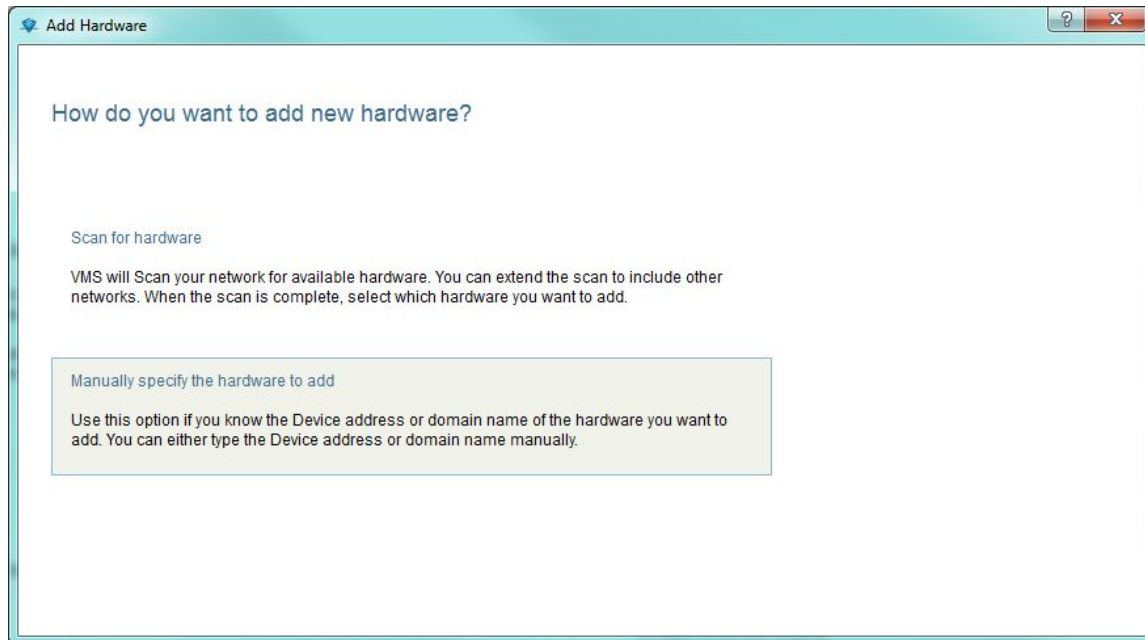
You have now successfully added 1 device(s) 8 channel(s) to your system. Maximum 256 channels can be added.

OK

1.2 Adding device manually using IP address

Note: You can use VMS software locally in your network by adding local IP addresses of your devices or remotely from other networks. However remote connections will work only if your router allows it - usually it's necessary to open ports in router's firewall settings (port forwarding) before hand. Default ports used by IP cameras are: 80, 554, 8080, for recorders: 80, 554, 5000.

C. Select '**Manually specify the hardware to add**' option:



D. Input your device details:

- **Device Address** - recorder's or camera's IP address, in case of remote connections your router's external IP or DDNS domain linked to your router.
- **Port** - device's HTTP port (default port no.: 80).
- **User Name / Password** - username and password for you device. Default login / password for recorders are **admin / 12345** and for cameras: **admin / admin**.
- **Channels** - number of video channels of your device, cameras have 1 video channel, recorders from 4 to even 36.
- **Driver** - you can use **Auto-detect** mode or choose one of the following:
onvif IPC (general driver for ONVIF cameras) / **Herospeed IPC** (zxtech IP cameras)
/ **Herospeed DVR** (for analog / AHD recorders) / **Herospeed NVR** (for IP recorders)
/ **Herospeed XVR** (for hybrid recorders).

and press '**Next**' button.

Add Hardware

Type IP addresses

Type the IP addresses of the hardware you want to add to your system or import the information from a comma separated values(CSV) file. You can speed up the scanning process by selecting the manufacturer(s) of the devices you want to add.

Add Hardware Devices

Device Address	Port	User Name	Password	Channels	Driver
192.168.1.213	80	admin	****	9	Auto-detect
	80			1	Auto-detect

Add P2P Devices

Serial number	User name	Password	Channels	Driver
			1	P2P IPC

Previous Next Cancel

E. Make sure VMS software connected to your device and go to next step:

Add Hardware

Verifying process completed.

Hardware Devices

IP Address	Port	User Name	Password	Channels	Driver	Status
192.168.1.213	80	admin	****	9	Auto-detect	Connected

P2P Devices

Serial number	User name	Password	Channels	Driver	Status
---------------	-----------	----------	----------	--------	--------

1 of 1 device(s) will be added to your system.

Previous Next Cancel

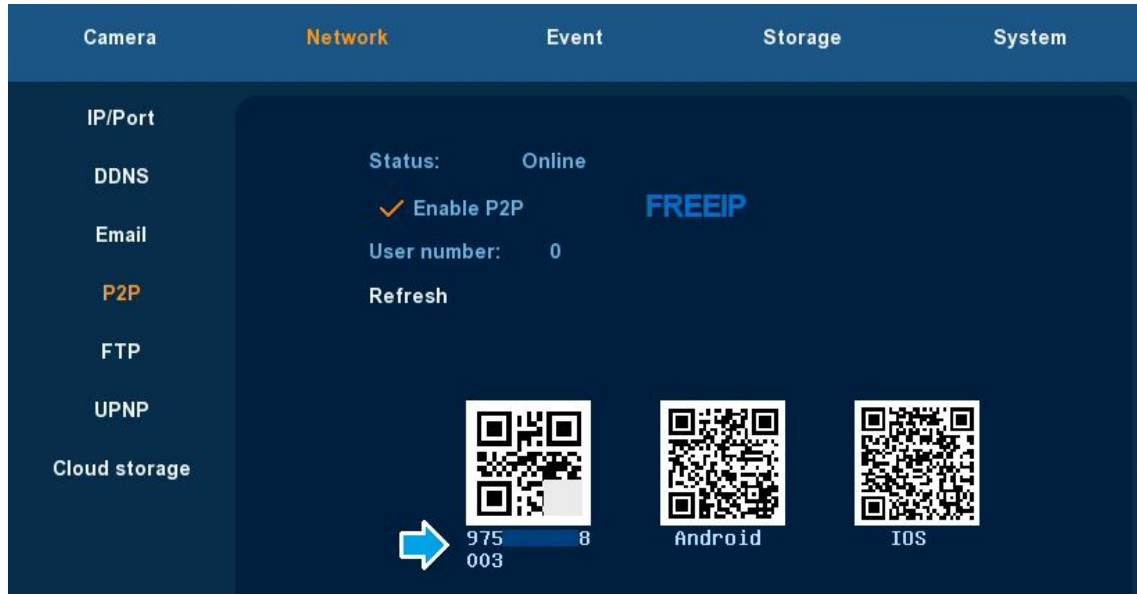
Close the wizard window with '**OK**' button after '**Your device are ready to use**' message.



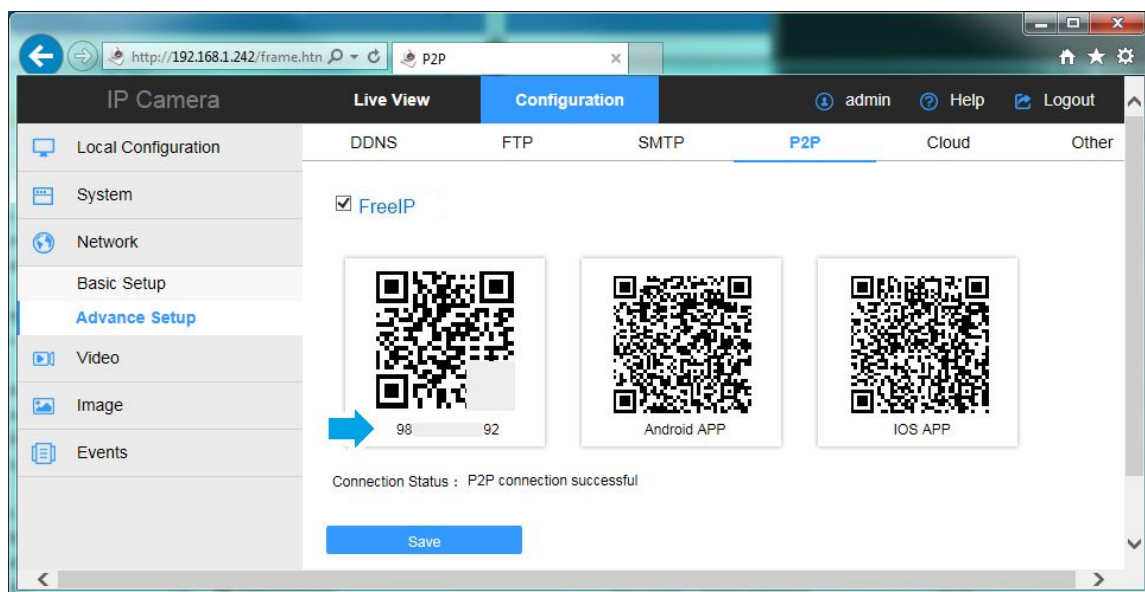
1.3 Adding device manually using serial number

Note: You can use VMS software locally in your network or remotely by adding devices using their serial numbers as long as your system's connected to the Internet.

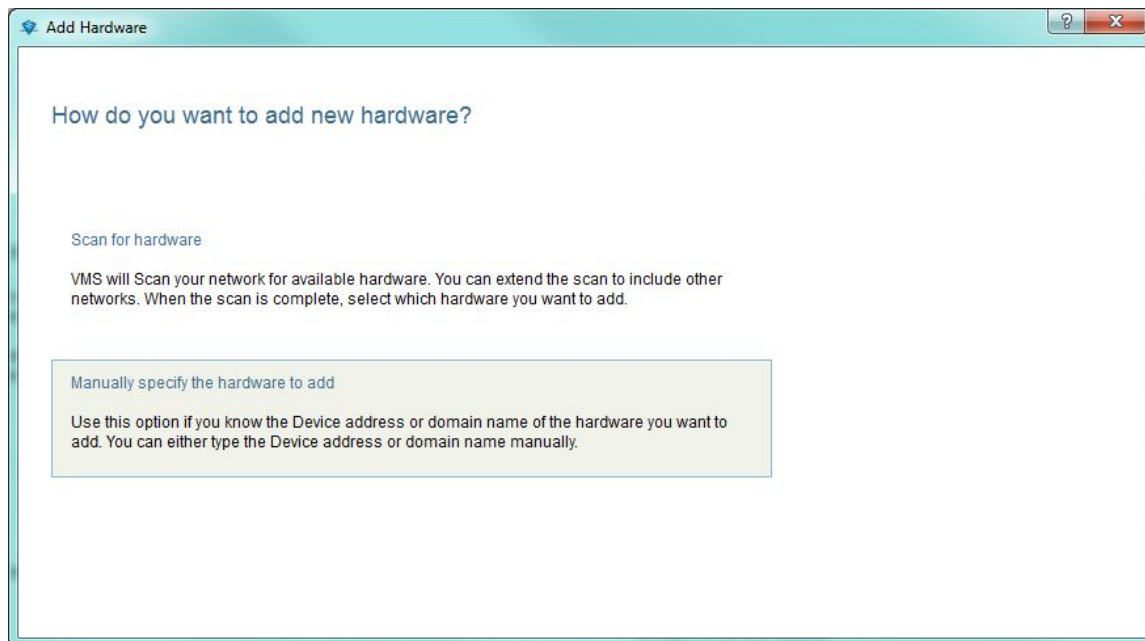
Serial number can be found on sticker placed on device, on a box and in device's menu. Recorder's serial no. is in **Main menu -> Network -> P2P**:



Camera's serial no. can be checked on its website in **Configuration -> Network -> Advanced Setup -> P2P**:



C. Select '**Manually specify the hardware to add**' option:



D. Input your device details:

- **Serial number** - recorder's or camera's IP address, in case of remote connections your router's external IP or DDNS domain linked to your router.
- **User Name / Password** - username and password for you device. Default login / password for recorders are **admin / 12345** and for cameras: **admin / admin**.
- **Channels** - number of video channels of your device, cameras have 1 video channel, recorders from 4 to even 36.
- **Driver** - use **P2P IPC** for cameras or **P2P NVR/XVR** for recorders.

and press '**Next**' button.

Add Hardware

Type IP addresses

Type the IP addresses of the hardware you want to add to your system or import the information from a comma separated values(CSV) file. You can speed up the scanning process by selecting the manufacturer(s) of the devices you want to add.

Add Hardware Devices

Device Address	Port	User Name	Password	Channels	Driver
	80			1	Auto-detect

Add P2P Devices

Serial number	User name	Password	Channels	Driver
9750830988003	admin	9	P2P NVR/XVR
			1	P2P IPC

Previous Next Cancel

E. Make sure VMS software connected to your device and go to next step:

Add Hardware

Verifying process completed.

Hardware Devices

IP Address	Port	User Name	Password	Channels	Driver	Status
192.168.1.213	80	admin	9	Auto-detect	Connected

P2P Devices

Serial number	User name	Password	Channels	Driver	Status
---------------	-----------	----------	----------	--------	--------

1 of 1 device(s) will be added to your system.

Previous Next Cancel

Close the wizard window with '**OK**' button after '**Your device are ready to use**' message.

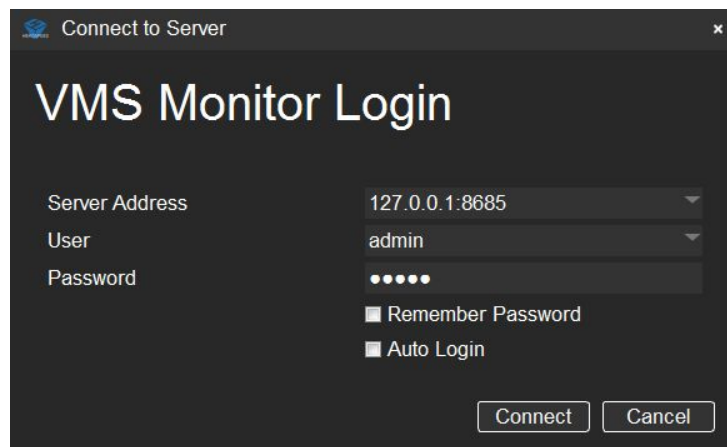


2. Live preview

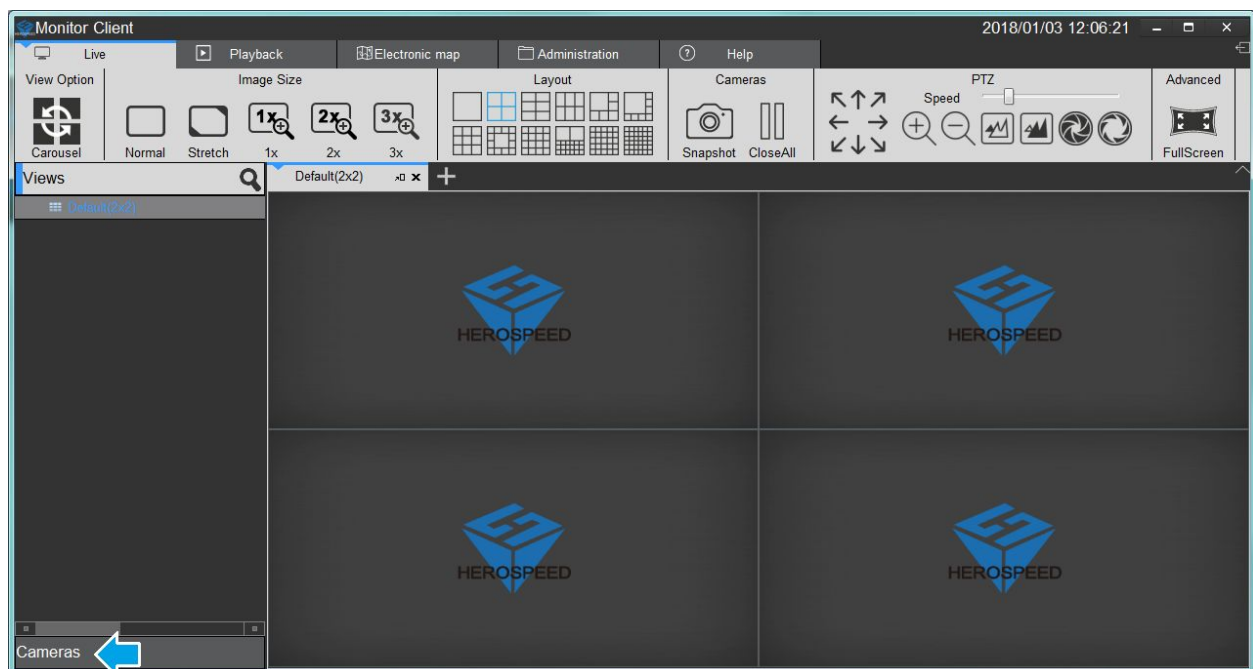
- A. Start **VMS MonitorClient** software:



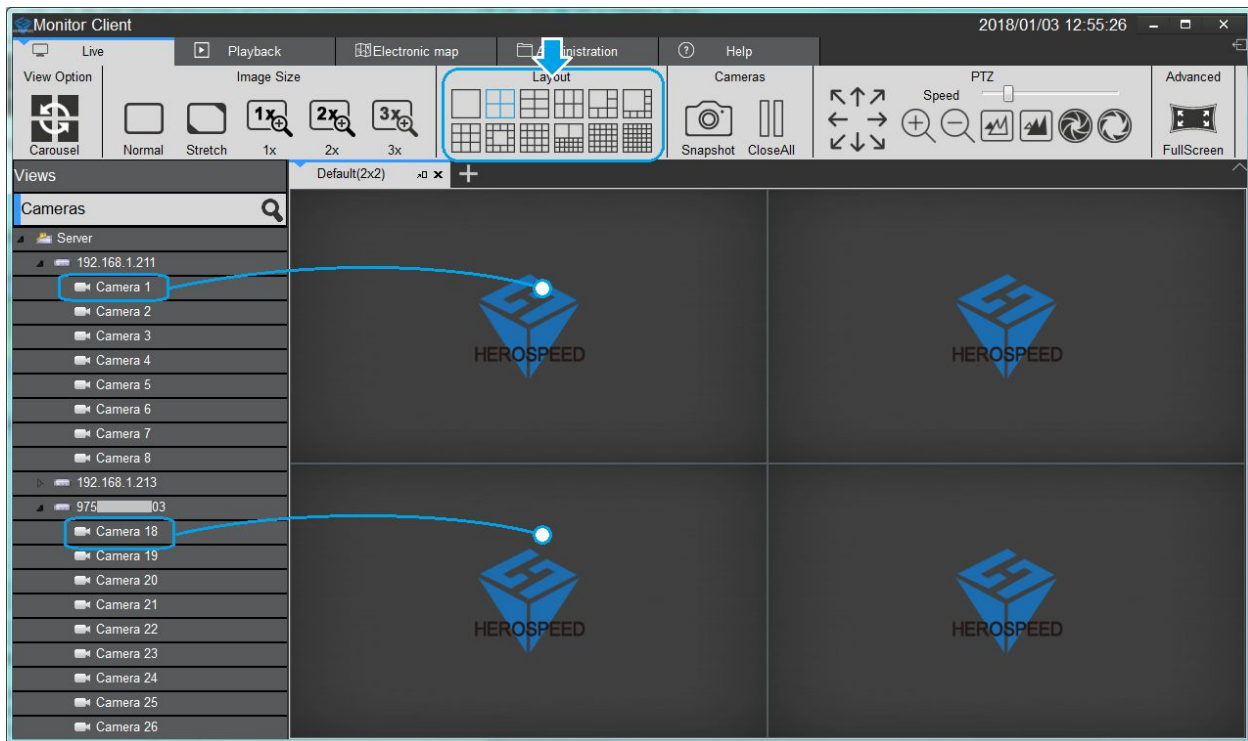
- B. Log in and press '**Connect**' button:



- C. Click '**Cameras**' button to display list of added devices.



- D. Choose how many preview windows you want to be displayed in **'Layout'** sections and drag chosen cameras from the list on to preview windows:



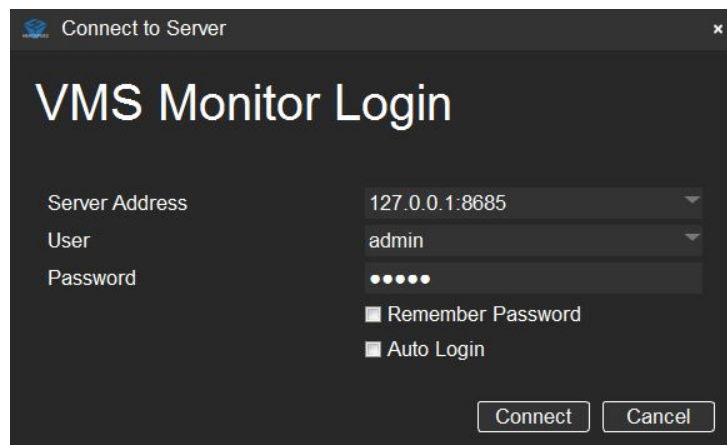
Note: optionally you can watch cameras by first selecting a window - click it and blue border will appear around it, and then double clicking camera on the list.

3. Playback and backup

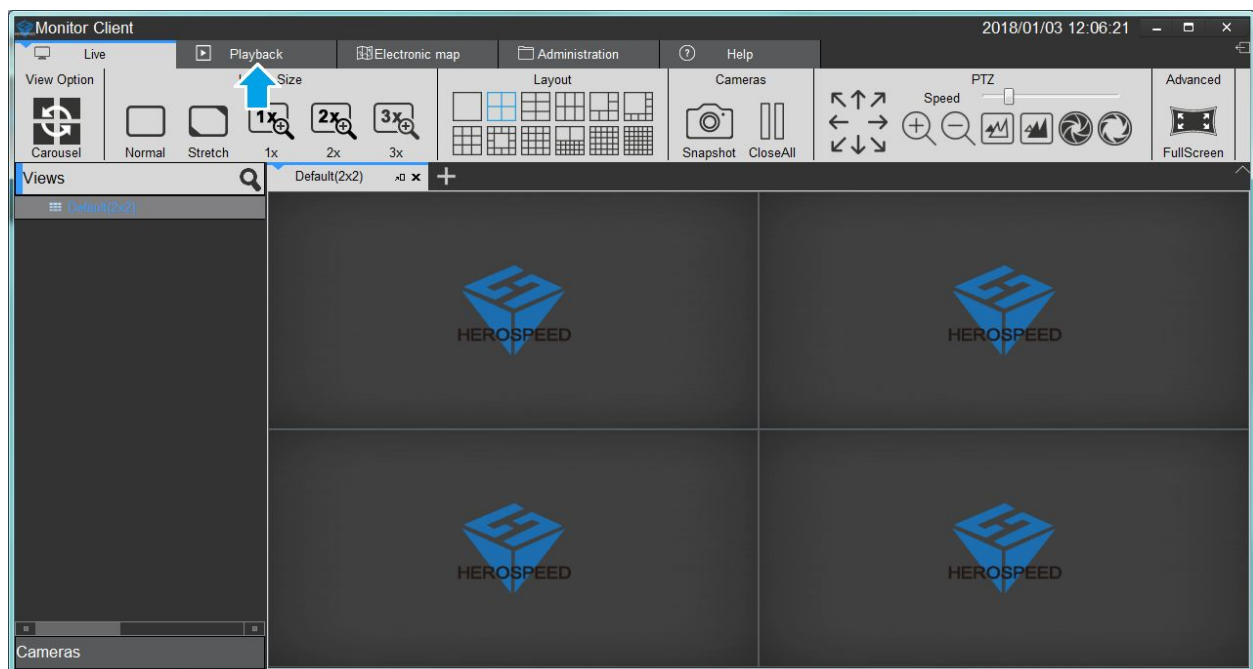
- A. Start **VMS MonitorClient** software:



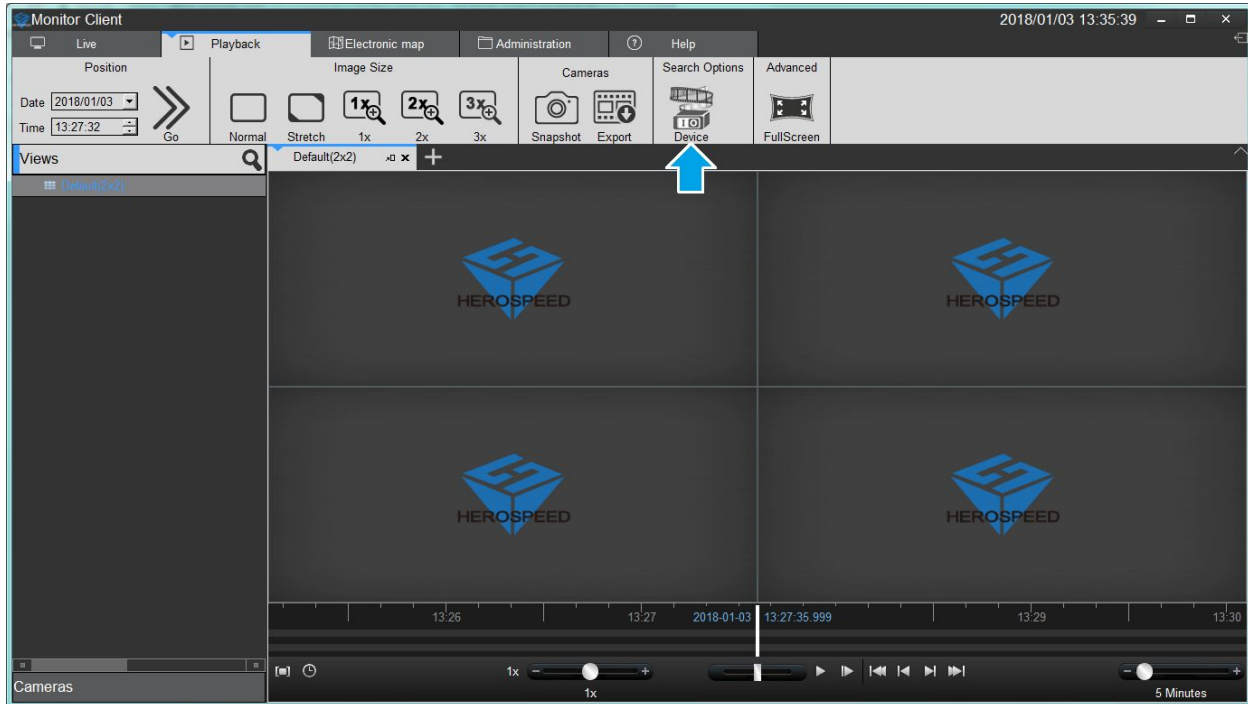
- B. Log in and press '**Connect**' button:



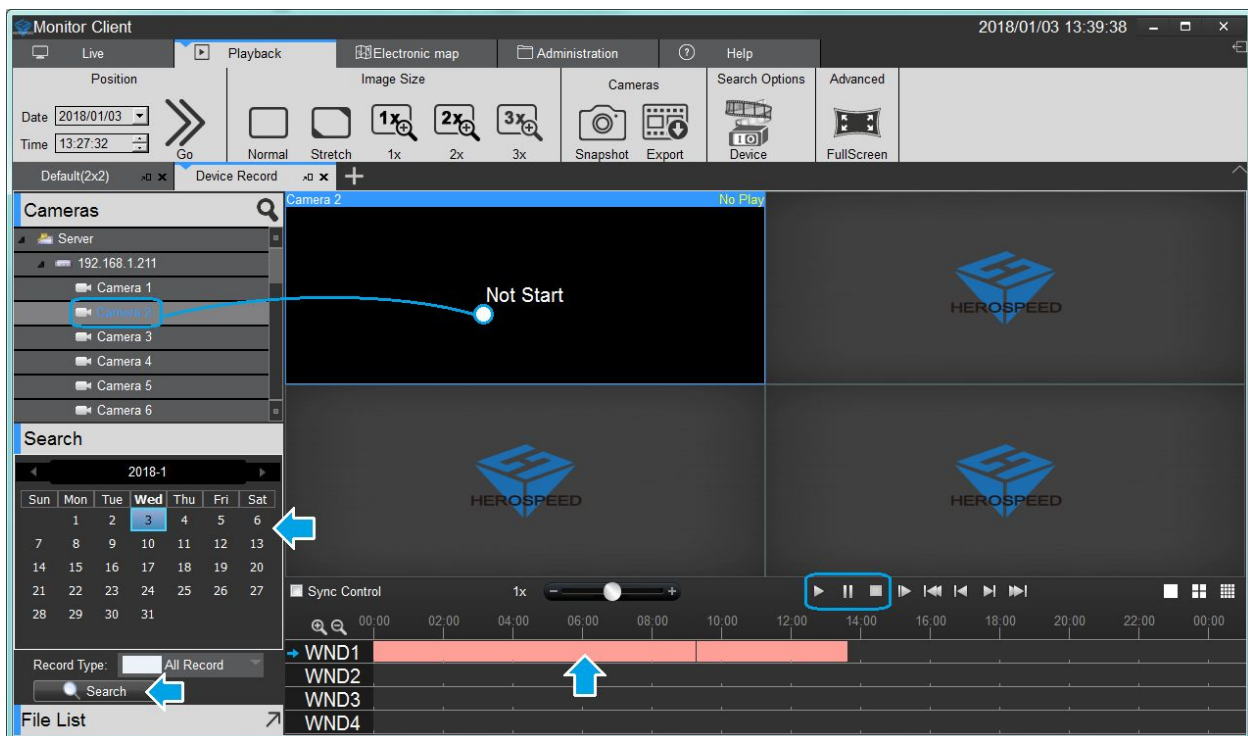
- C. Click '**Playback**' tab:



D. Click **'Device'** button (from **'Search Options'** section):



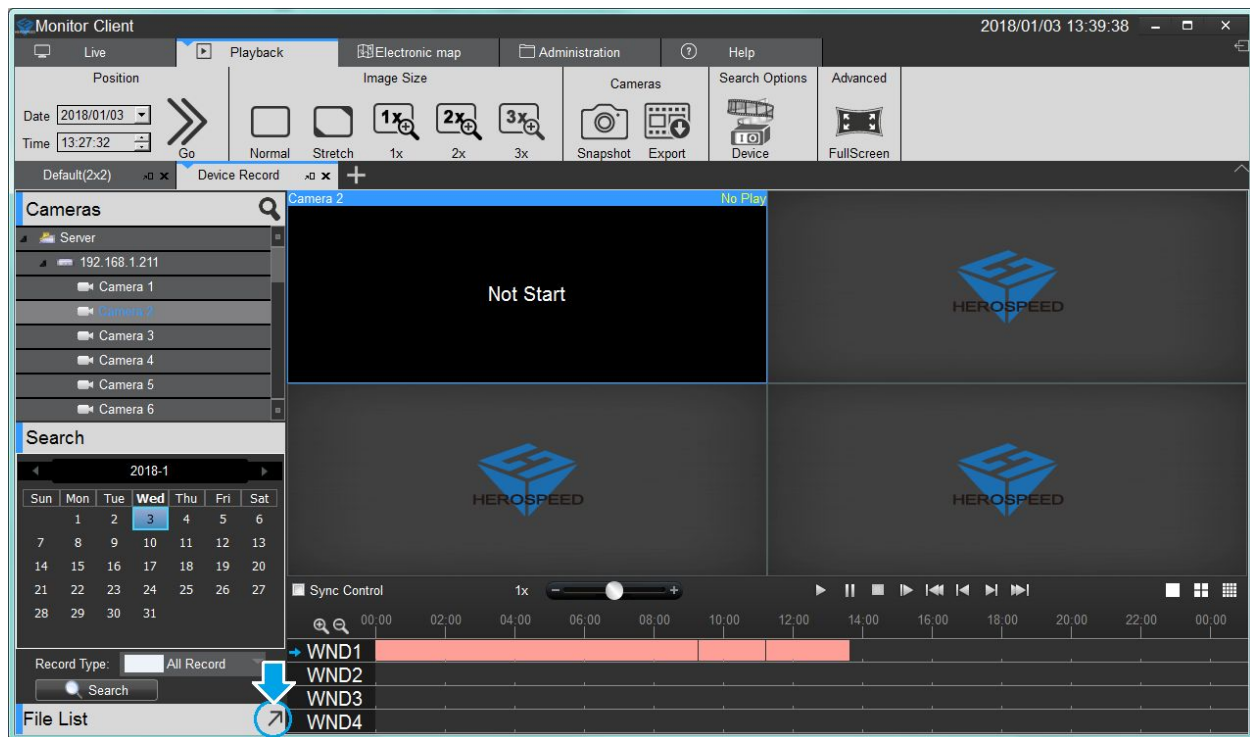
E. Drag chosen camera on to preview window, select date from the calendar and press **'Search'** button:



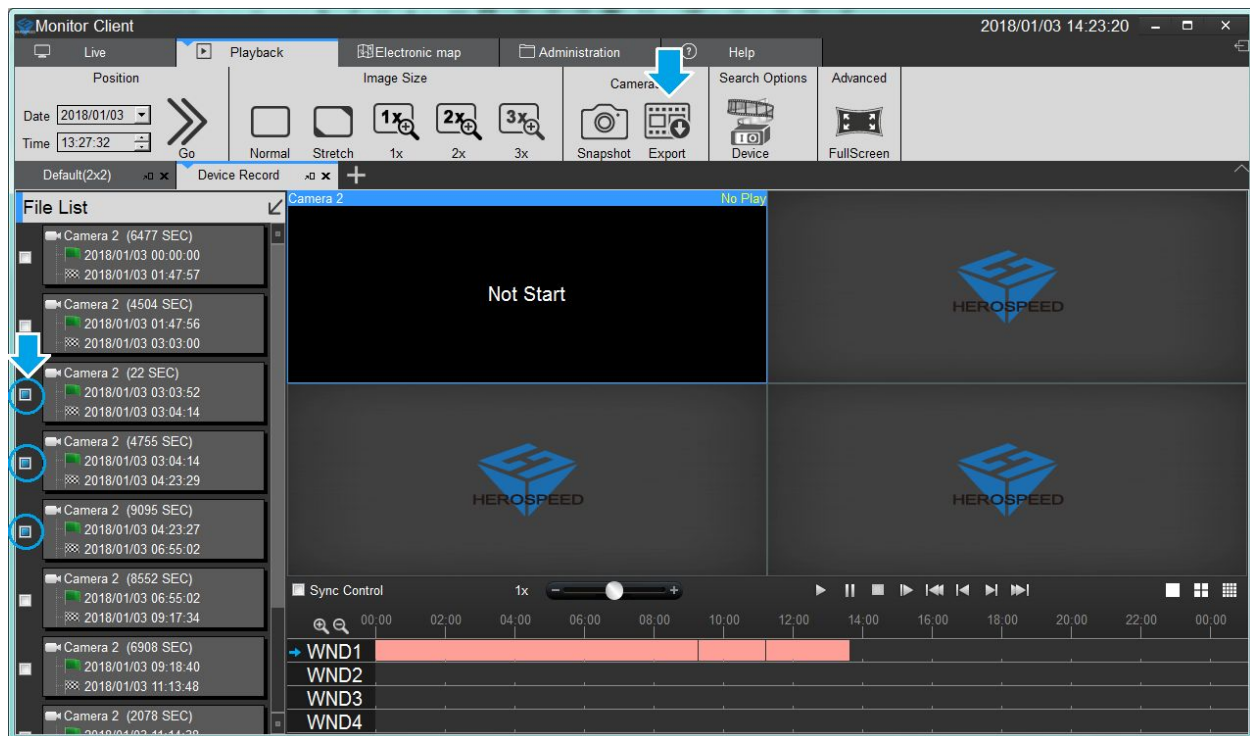
You'll see pink bar on the timeline below - those are recorded files. You can play it by clicking play button or double click on the timeline on this pink bar around time you want to watch it.

Once you know from what time you want to copy recordings you can proceed to copying them from recorder to your computer's hard drive.

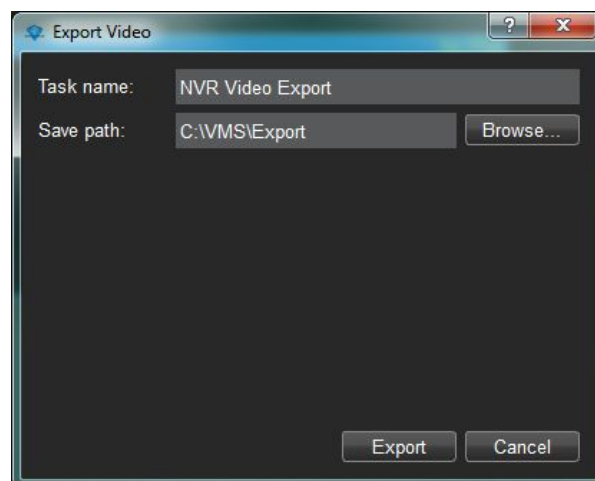
F. Click an arrow on **'File List'** button to display file list:



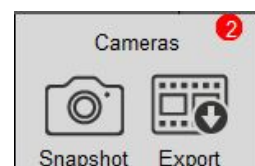
G. Select file / files you want to copy and press **'Export'** button:



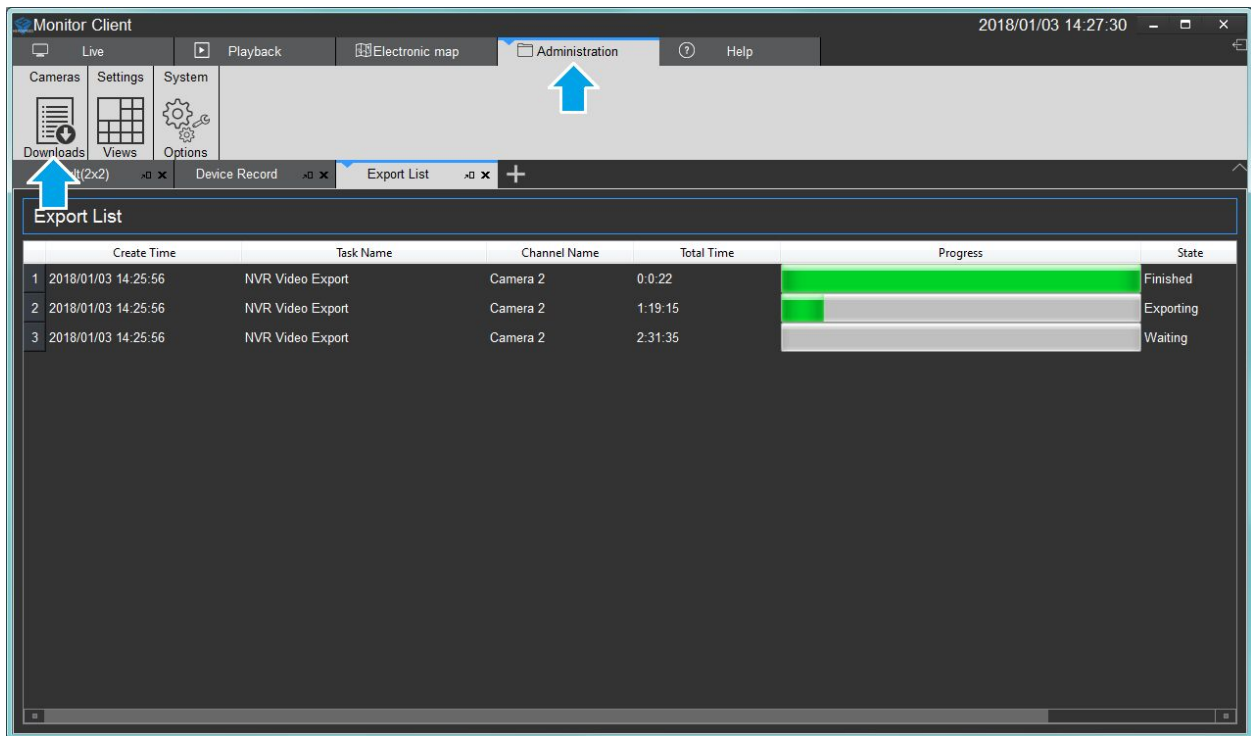
H. Popup window will let you choose where to save them, click **'Browse...'** button to change directory and then **'Export'** to start backup process:



Once backup starts you'll see red circle with number of files left to copy above **'Export'** button:



- I. You can find more detail about file download in '**Administration**' tab by clicking '**Downloads**' button:



You can also cancel download of all or some files by clicking '**Cancel**' button next to the progress bar (it'll be visible after clicking file on the list):

