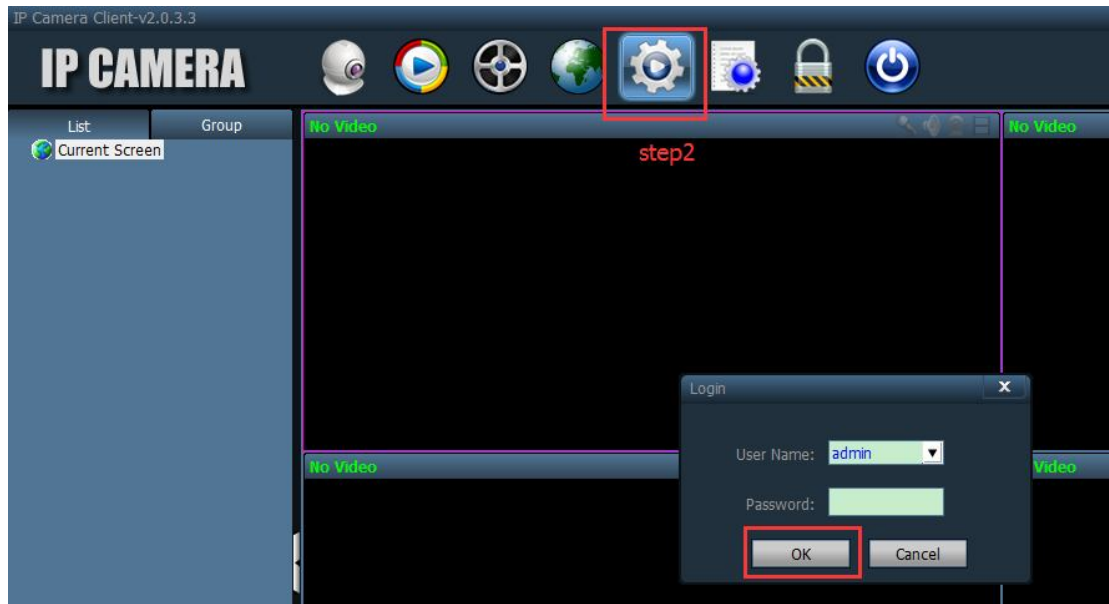


# Local Client User Guide

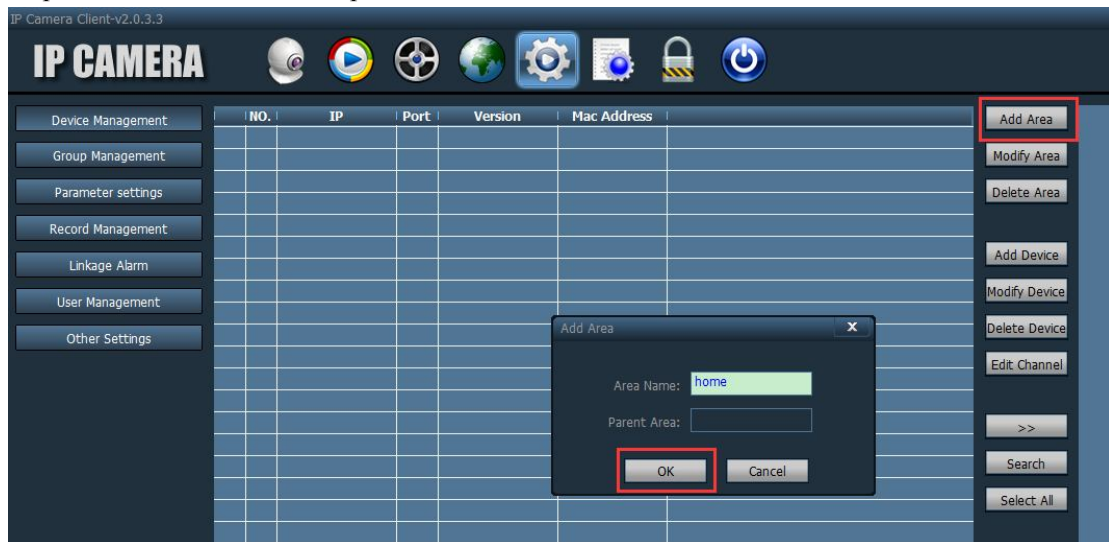


Step 1. Double click

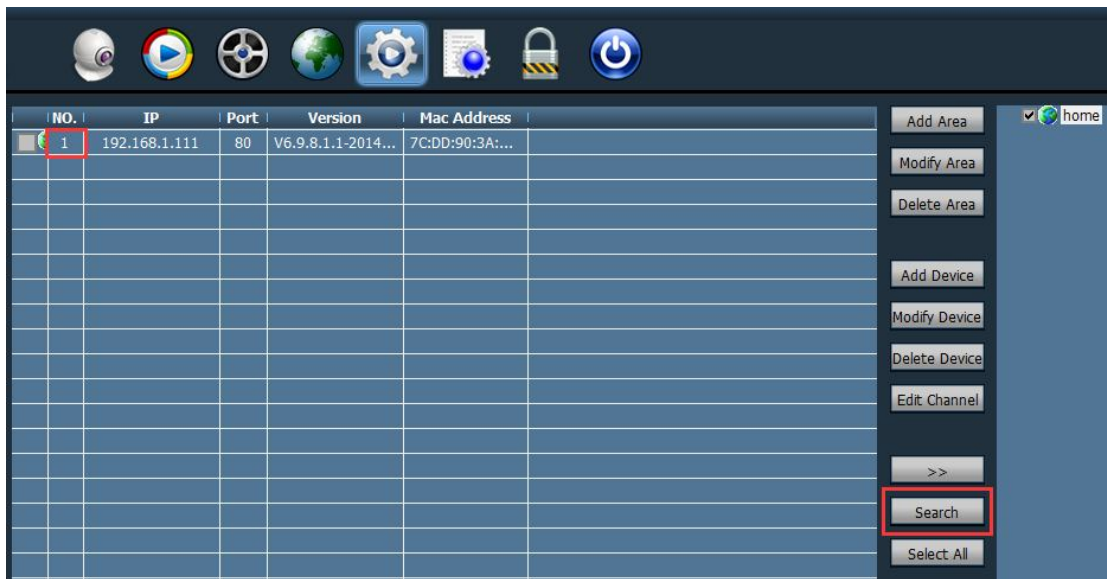
Step2. Click setting, Password is empty, then click OK



Step3. Click Add Area, then input an Area Name, click OK



Step4. Click Search, then show the camera

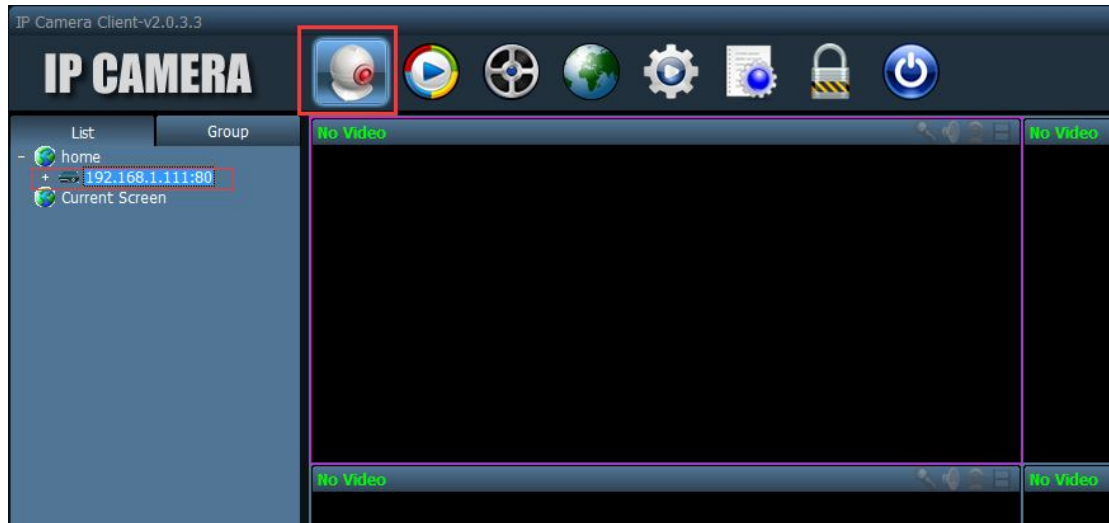


Step5. Choose camera and area "home", then click





Step6. Click , then click “+”



Step7. Double click “Channel 01”, then you could watch the video.

