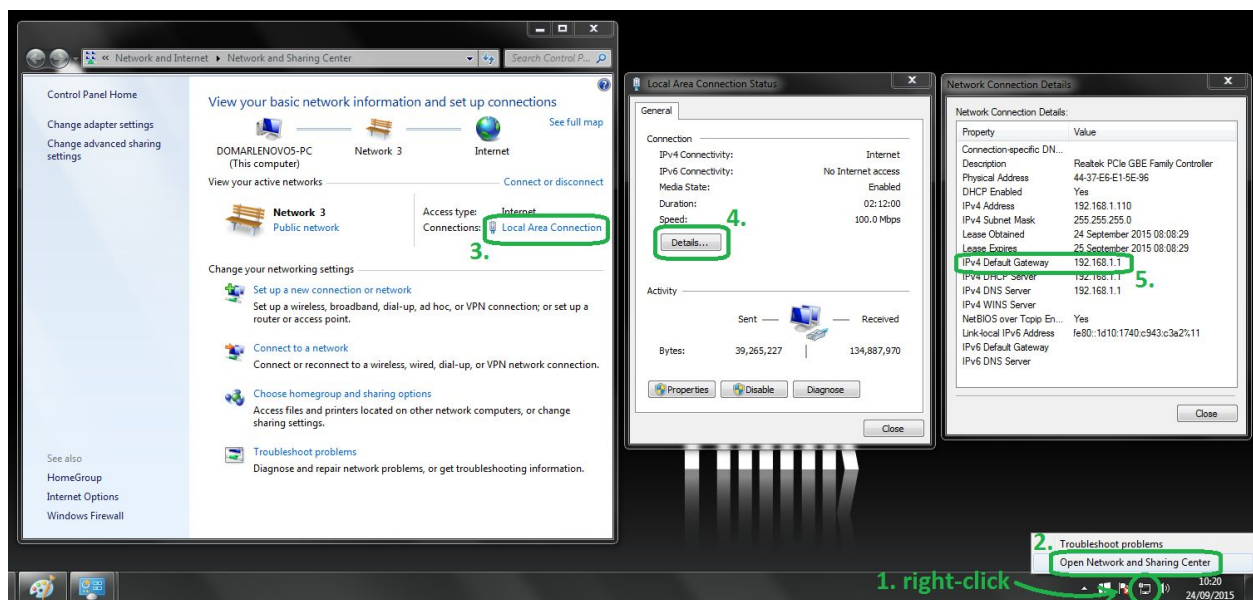


Mini NVR + IP cameras

Quick Setup Guide

Step 1

Check what is your router IP address:



Step 2

Run **IPCSearcher**:



You can find it on a CD that came with recorder/camera or download it [here](#).
If you need older version you can find it on our website: [DomarTechSupport](#).

Press **Search** and you will see list of your cameras/recorders.

IP Camera Searcher

In...	Model	Devic...	Firmware Version	IP address	Subnet Mask	GateWay	DNS	MAC
1	NVR	NVR	NVR_HI3520D_4_v5.1.40	192.168.1.173	255.255.255.0	192.168.1.1	192.168.1.1	00:00:11
2	IPCAMERA	IPC	A5S66_IMX222_X_5.1.14.4	192.168.1.118	255.255.255.0	192.168.1.1	192.168.1.1	00:00:11
3	IPCAMERA	IPC	A5S66_IMX222_X_5.1.14.4	192.168.1.119	255.255.255.0	192.168.1.1	192.168.1.1	00:00:11
4	IPCAMERA	IPC	A5S66_IMX222_X_5.1.14.4	192.168.1.116	255.255.255.0	192.168.1.1	192.168.1.1	00:00:11
5	IPCAMERA	IPC	A5S66_IMX322_X_5.1.32.5	192.168.1.115	255.255.255.0	192.168.1.1	192.168.1.1	00:00:11

Ver. 5.1.14.3

Search

EditUpgrade

IP Address

0 . 0 . 0 . 0

Subnet Mask

255 . 255 . 255 . 0

GateWay

0 . 0 . 0 . 0

DNS

0 . 0 . 0 . 0

Http Port

Rtsp Port

☐ DHCP Enable

Username

admin

Password

Modify

Step 3

Change network settings of your devices to match your router.

IP Camera Searcher

Index	Model	Device Name	Firmware Version	IP address	Subnet Mask	GateWay	DNS
1	NVR	NVR	NVR_HI3520D_8_v5.1....	192.168.1.88	255.255.255.0	192.168.1.1	192.168.1.1
2	IPCAMERA	IPC	A5S66_IMX222_X_5.1....	192.168.1.89	255.255.255.0	192.168.1.1	192.168.1.1
3	IPCAMERA	IPC	DM368+IMX222_X_5.1....	192.168.1.92	255.255.255.0	192.168.1.1	192.168.1.1

Ver. 5.1.12.5

Search

EditUpgrade

IP Address

192 . 168 . 1 . 89

Subnet Mask

255 . 255 . 255 . 0

GateWay

192 . 168 . 1 . 1

DNS

192 . 168 . 1 . 1

Http Port

80

Rtsp Port

80

☐ DHCP Enable

Username

admin

Password

Modify

IP address: each device should have different IP address from the subnetwork of your router.

General rule: 3 first numbers in IP address should be the same as router IP address (gateway), last number should be different for each device.

Example: router - 192.168.0.1, recorder - 192.168.0.200, camera 1 - 192.168.0.201, camera 2 - 192.168.0.202

Subnet Mask: usually 255.255.255.0 (you can check it on computer - IPv4 Subnet Mask in Step 1)

Gateway: your router IP address (IPv4 Default Gateway from Step 1)

DNS: your router IP address (IPv4 Default Gateway from Step 1)

HTTP Port/RTSP Port: don't change them, defaults are 80 and/or 554

DHCP Enable: disable it, otherwise you won't be able to modify network settings.

Put in **Password**, default ones are: **admin** for cameras and **12345** for recorder. Press **Modify**. Refresh device list by pressing **Search** again - device that you're changing settings of now should disappear from this list. It takes around 90 seconds for camera to change network settings and connect back using new IP.

Step 4

Link your cameras to the recorder:

On the recorder right click your mouse and choose **Remote devices**, press **Search** and recorder should show you cameras IP addresses. Select cameras and choose **Add**, then **Confirm**.

