

Mini NVR & Graphite NVR

Operation start guide CMS

DOMAR.com

Table of contents

[CHAPTER 1. Installation and first run](#)

[Installation file](#)

[Installation](#)

[First run](#)

[CHAPTER 2. Adding devices](#)

[Searching for devices](#)

[Manually adding devices](#)

[Starting live feed](#)

[CHAPTER 3. Remote configuration](#)

[CHAPTER 4. Remote playback and backup](#)

[CHAPTER 5. Local recording and playback](#)

[Motion Detection Setup](#)

[Watching recordings](#)

CHAPTER 1. Installation and first run

1. Installation file

You can find CMS installation file here:

- version 6.1.2.5: [download](#)
- version 5.1.32.4: [download](#)

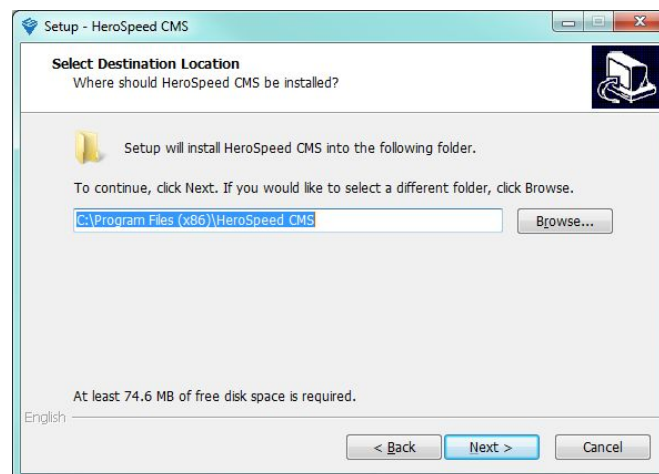
2. Installation

Download and run installation file. It'll install HeroSpeed CMS and 2 addition modules: Dvr_WebOcx_P and Hvr_WebOcx, so you'll see 3 setup wizards one after another.

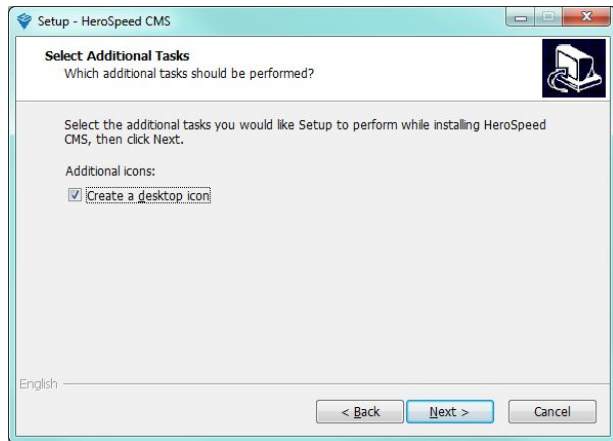
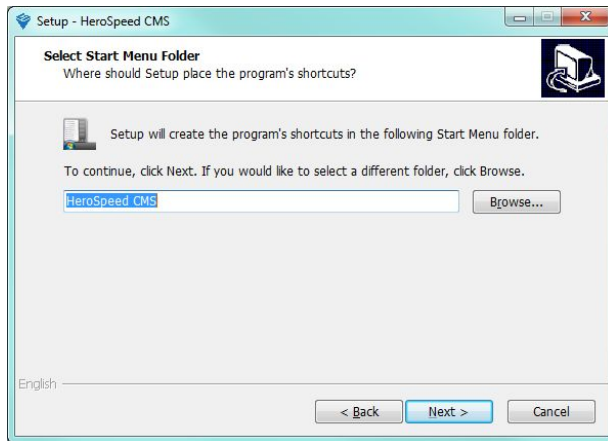
First you'll be asked to choose a language:



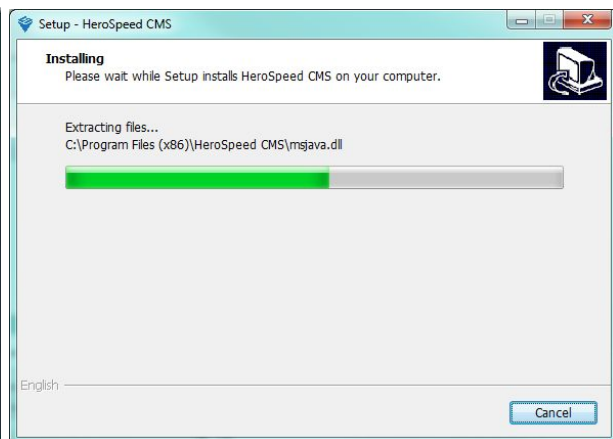
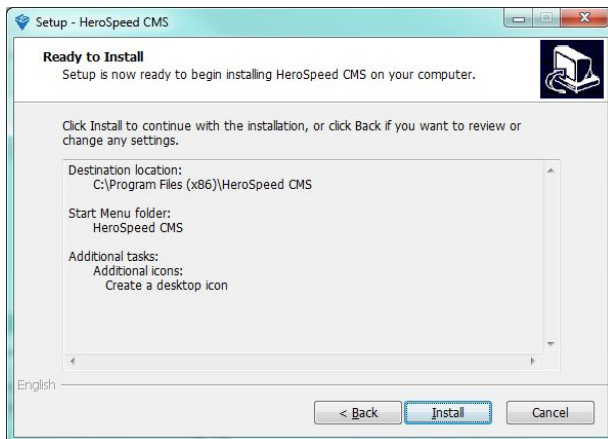
Step 1. Choose where it'll be installed. Press 'Next'.



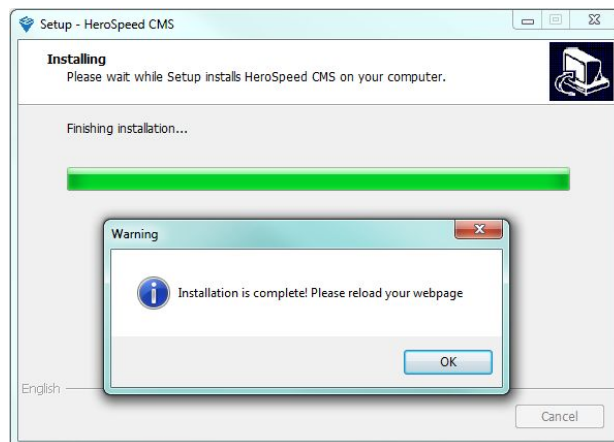
Step 2. Choose name for Start menu shortcut. **Step 3.** Choose if you want program to create shortcut on your Desktop. Press 'Next'.



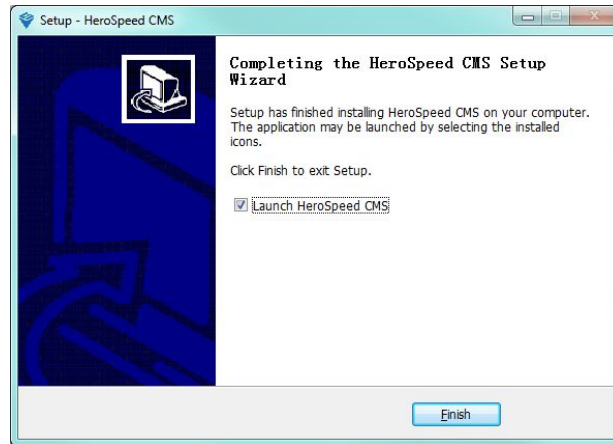
Step 4. Program will display summarized information. Press 'Install' to continue with installation process or 'Back' if you still want to make some changes.



After successful installation you'll see 'Installation complete' message.



Click 'OK' to proceed to module installation wizard. Installation process will look the same as main program's - you'll be asked to repeat steps 1 - 4 for both modules.
After that installation is finished. Choose if you want to run HeroSpeed CMS now and press 'Finish'.



3. First run

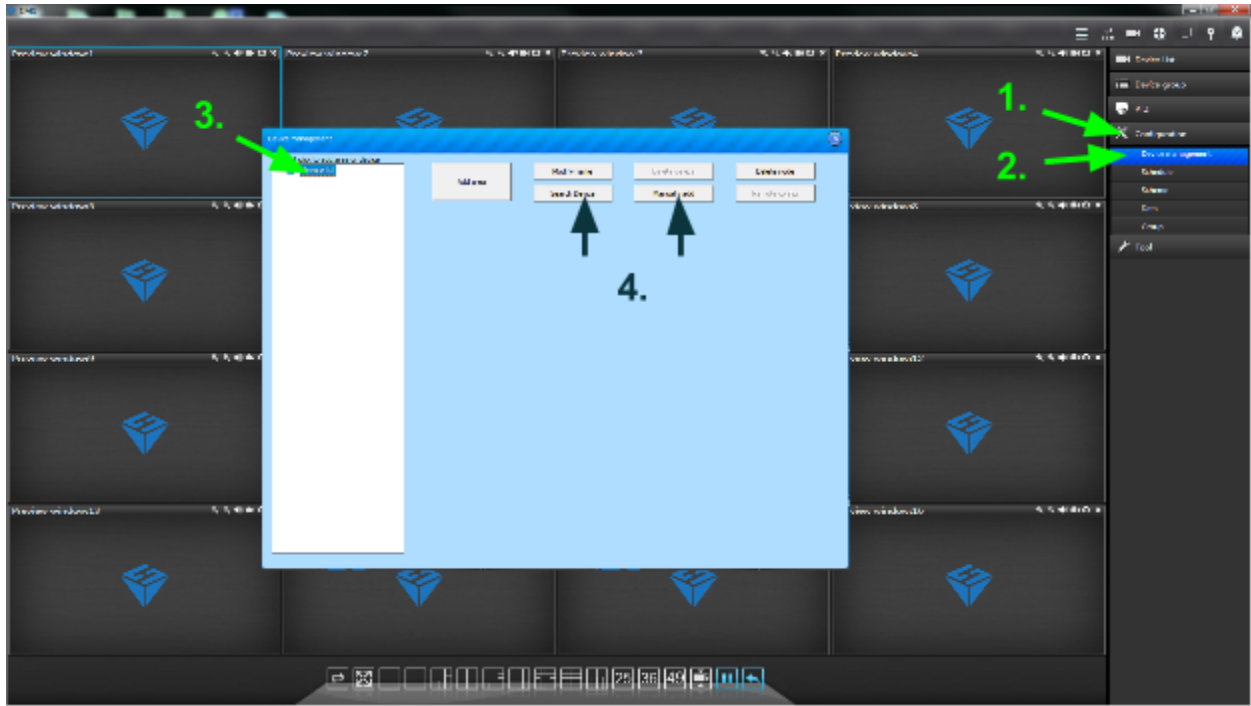
When starting HeroSpeed CMS for the first time you'll be asked to create username and password:



You'll be asked about it every time you start a program. **Tip:** it is not password for the NVR. It's only used for HeroSpeed CMS.

After creating user you'll be taken to main window.

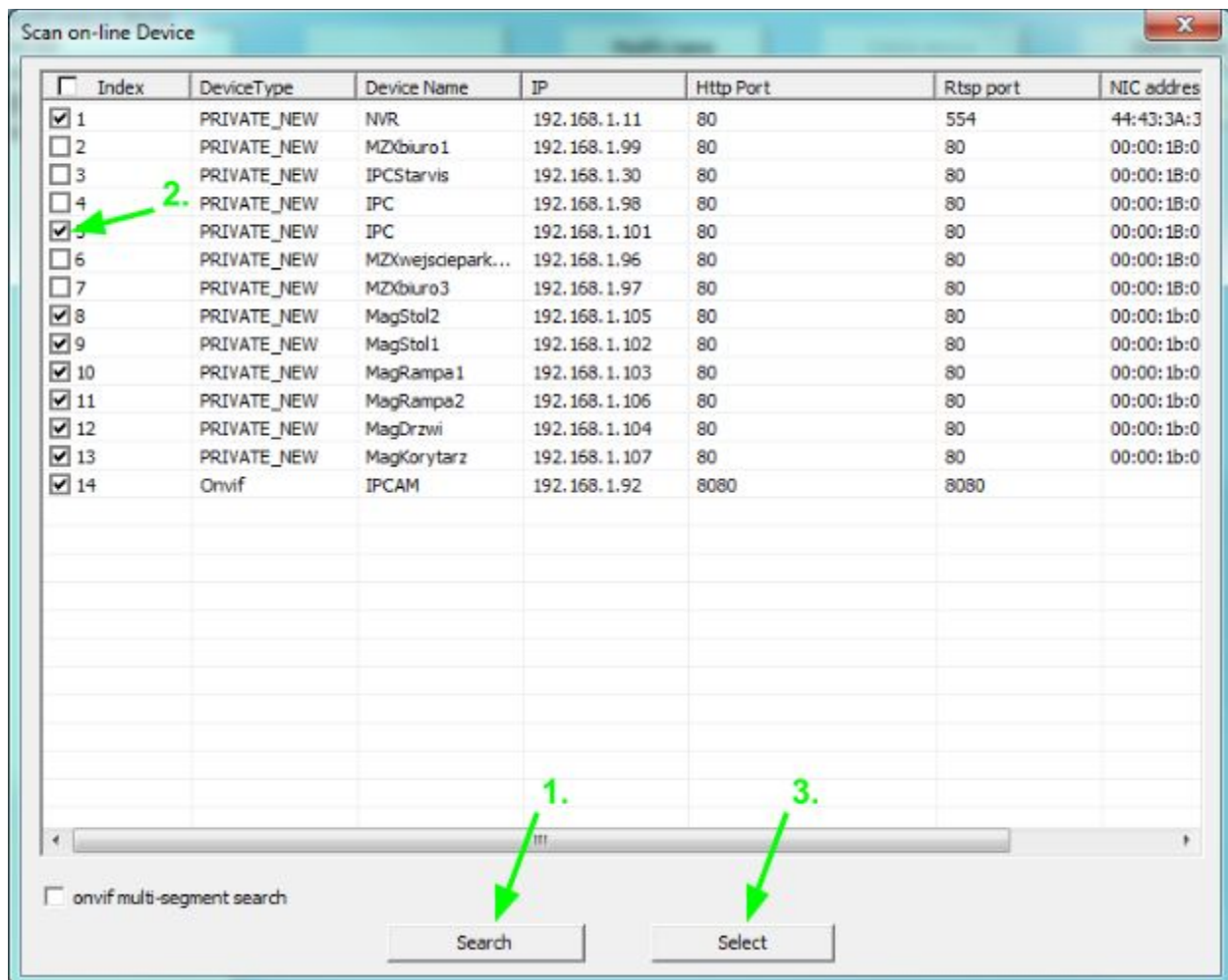
CHAPTER 2. Adding devices



1. In menu on the right side click 'Configuration'.
2. Click on 'Device management'.
3. Click on 'Device list' to select it. Buttons on top will become active.
4. Click on either 'Search Device' or 'Manually add' button.

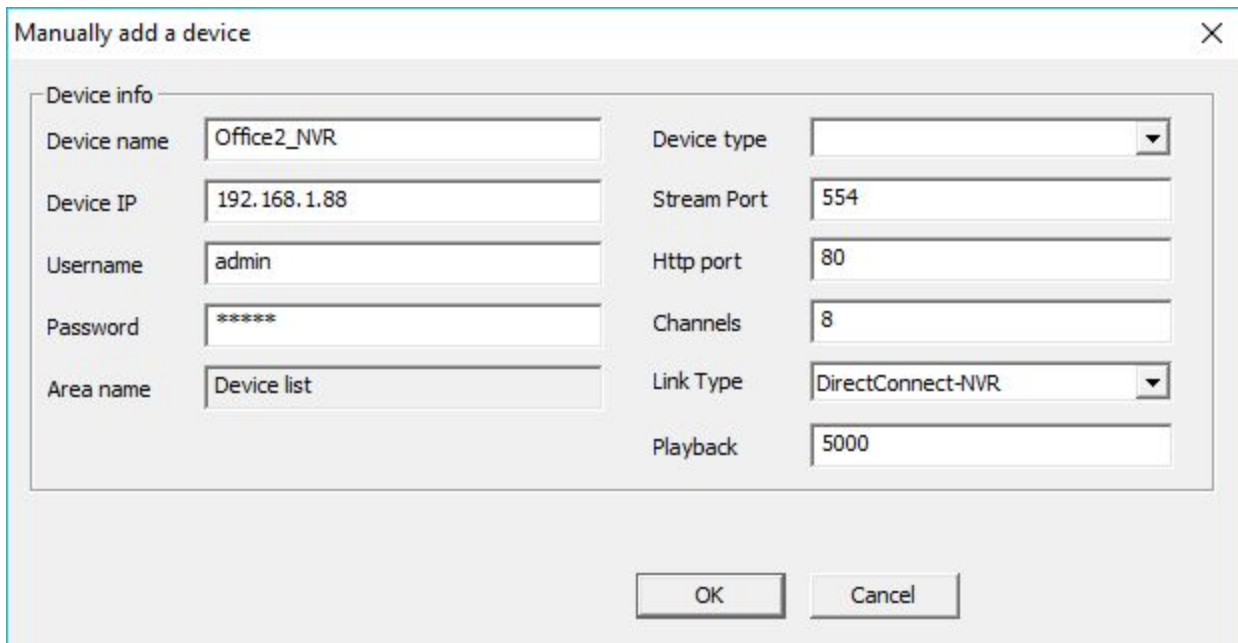
Tip: Searching for devices will only work if you have NVR or cameras in your local network. If you want to add device that's in the different location, choose manual adding instead.

Searching for devices



1. Press 'Search' button. After a while program will list compatible devices found in your local network.
2. Select devices you want to add to program's device list (tick the boxes).
3. Click on 'Select' button to confirm selection.

Manually adding devices

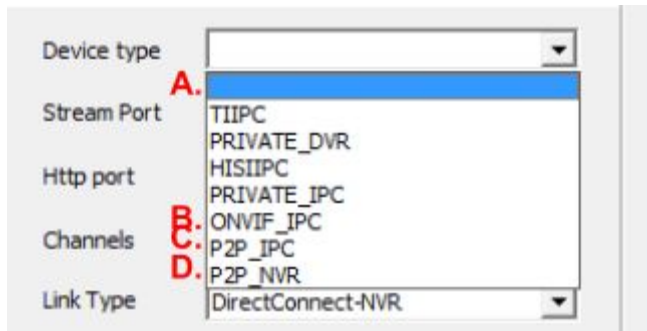


Device name - name that will be displayed on program's device list.

Device Type - type of device you're adding.

Choose:

- A.** for NVRs using IP address
- B.** for cameras using IP address
- C.** for cameras using serial no.
(P2P connection)
- D.** for NVRs using serial no.
(P2P connection)



Device IP / Device ID - IP address of NVR/camera or it's serial number.

Tip: you can find this serial number in NVR's *Main menu* -> *Network* -> *P2P* or on camera webpage in *Network* section. To find NVR's/camera's IP address you can use [IPCSearcher](https://www.domar.com/support/IPCSearcher) software.

Username / Password - username and password for your NVR/camera.

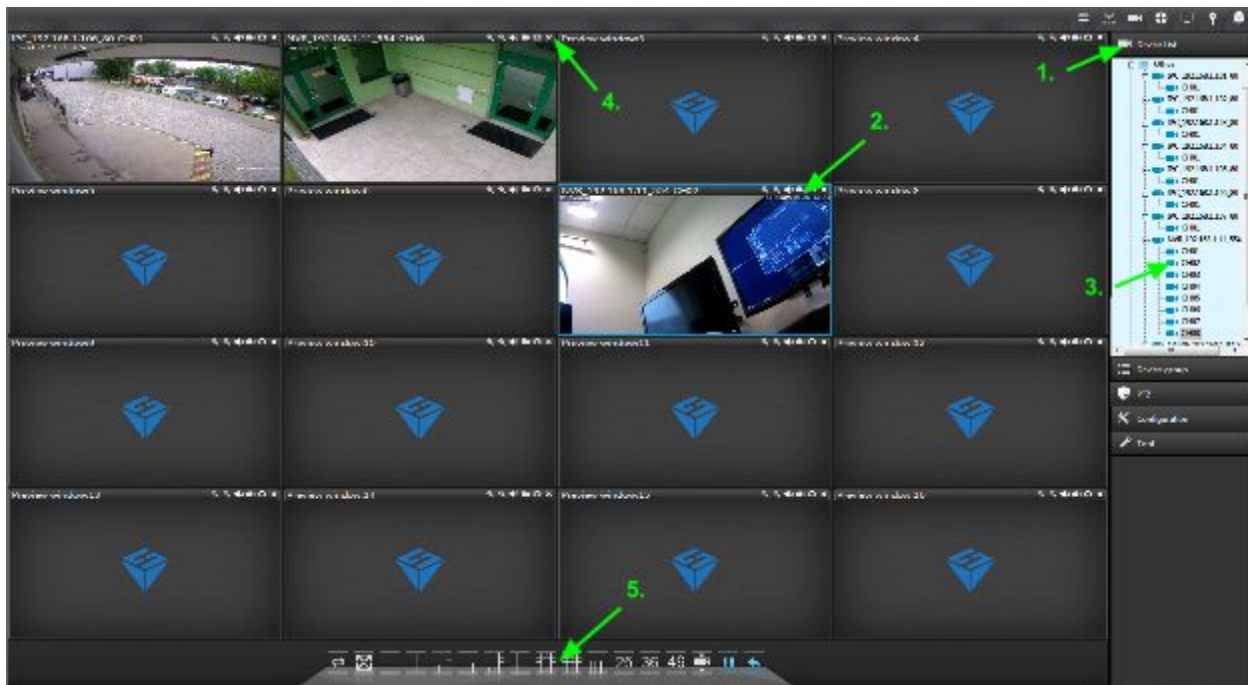
Stream Port - port no. on which device is streaming video (either RTSP or Onvif port no.).

Http port - port no. used to display web interface.

Channels - number of channels (cameras) of your NVR. For cameras that value is 1.

Playback - port no. used to access NVR's playback.

Starting live feed

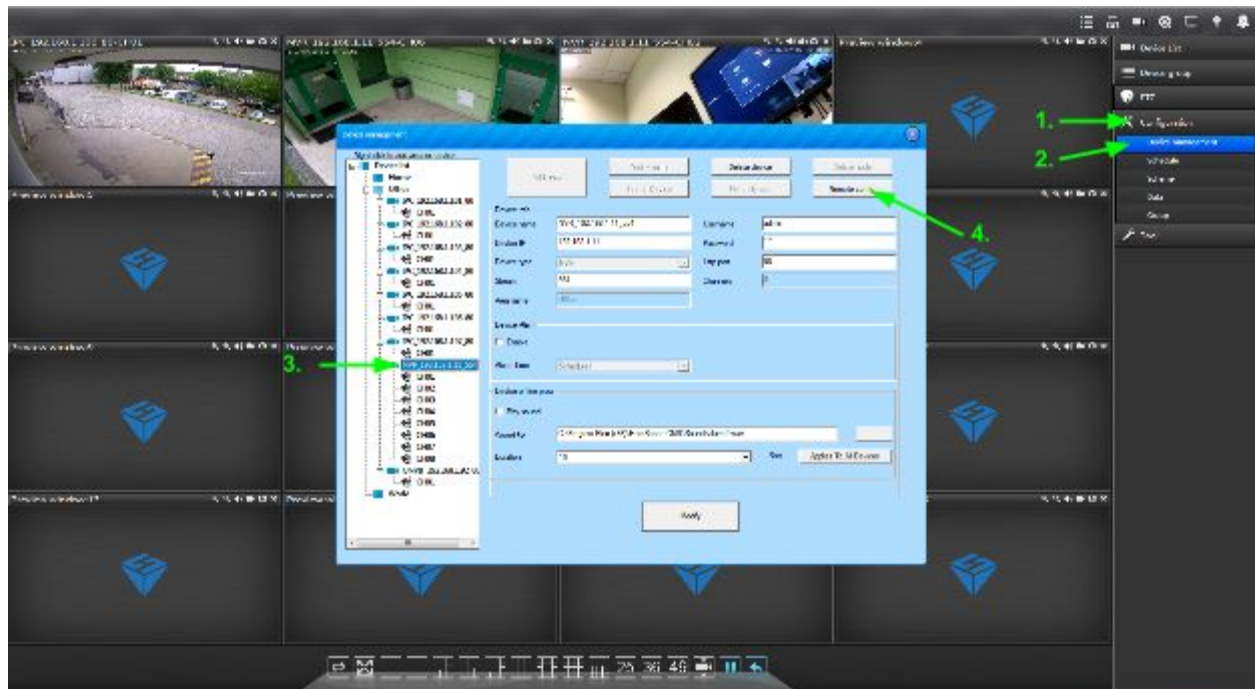


1. Click on 'Device list' in the right-hand menu.
2. Select a window. After clicking, chosen window will have blue border around it.
3. Double click on channel number you want to watch. Or right-click it and choose 'Start Live View'.
4. To stop watching either double click channel again or use x icon in top right corner of camera window.
5. At the bottom you'll find icons for choosing how many windows are displayed on screen.

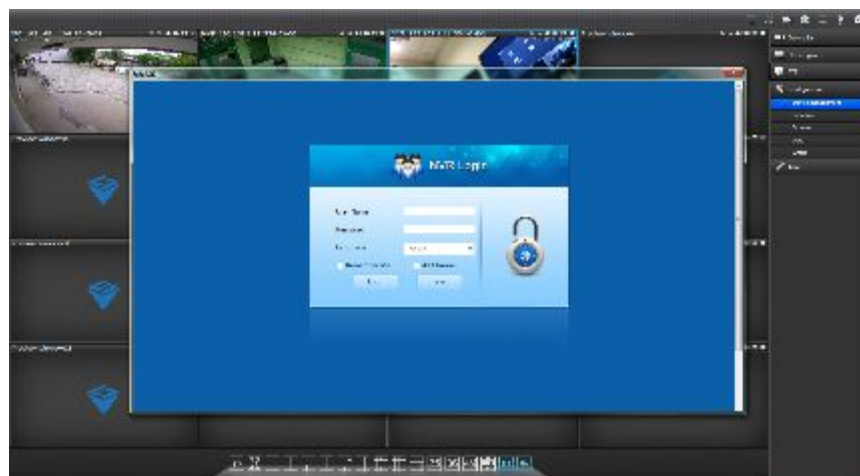
CHAPTER 3. Remote configuration

Using CMS allow you to remotely change settings of the NVR and cameras.

Tip: This option will only be active if NVR/camera was added using IP address.

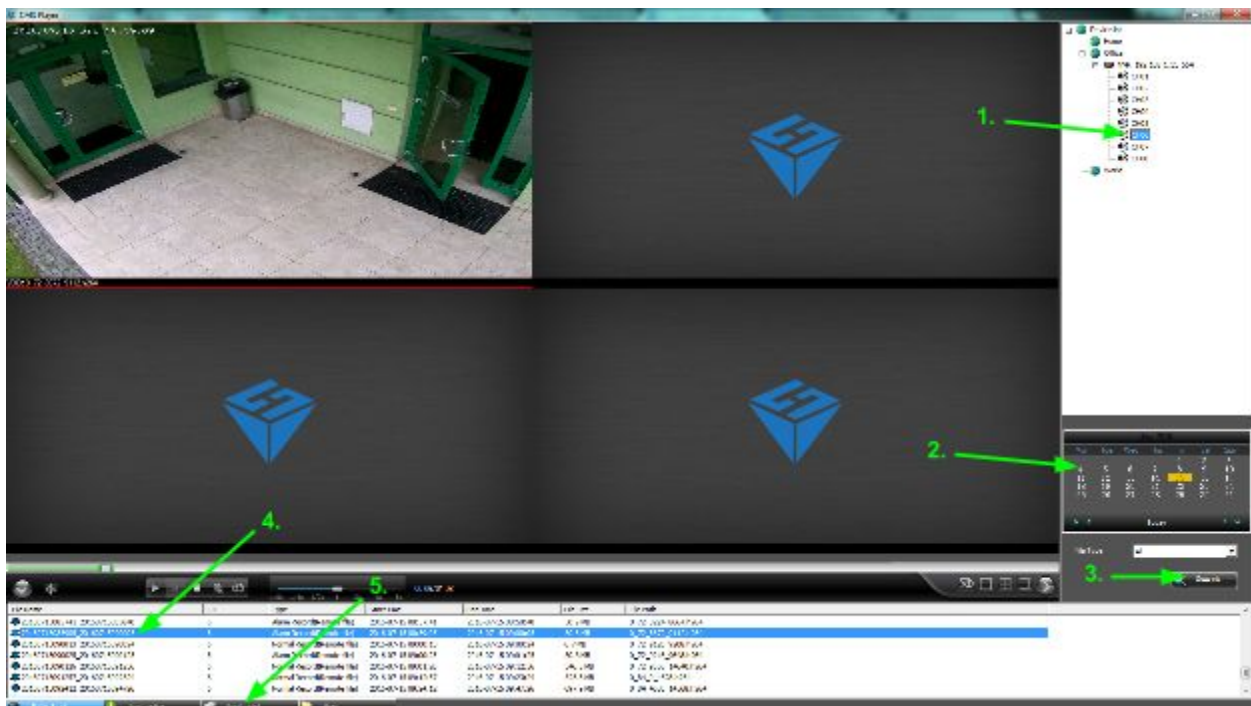
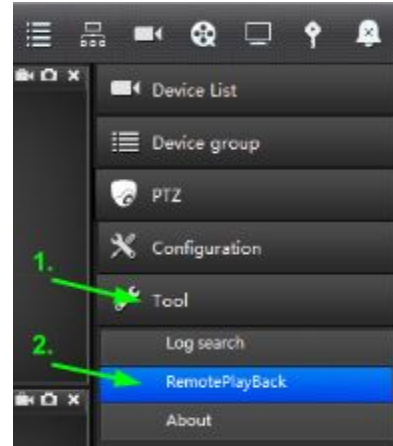


1. In menu on the right side click 'Configuration'.
2. Click on 'Device management'.
3. Click on the name of device you want to access. Buttons on top will become active.
4. Click on 'Remote config' button.
5. CMS will open new window displaying NVR/camera web page:






CHAPTER 4. Remote playback and backup

1. In menu on the right side click 'Tool'.
2. Click on 'RemotePlayBack'.
3. CMS will open new window - CMS Player.





1. Select channel number which you want to watch recordings from.
2. Choose a date.
3. Press 'Search' button. List of files will appear below.
4. Double-click file on the list to play it. Right-click it and choose 'Remote Download' to start file transfer from NVR to computer hard drive.


5. By clicking 'Downloaded' tab at the bottom bar you can check what files were downloaded and path where they were saved on your computer hard drive.

File Name	File Size	File Path
 0_67_13392_13560.avi	8.1 MB	\\NVR_192.168.1.11_554\CH4\2016-7-15\0_67_13392_13560.avi
 0_67_13568_13728.avi	7.8 MB	\\NVR_192.168.1.11_554\CH4\2016-7-15\0_67_13568_13728.avi
 0_70_6984_7176.avi	25.1 MB	\\NVR_192.168.1.11_554\CH5\2016-7-15\0_70_6984_7176.avi

File List

 Downloading

 Downloaded

 Open

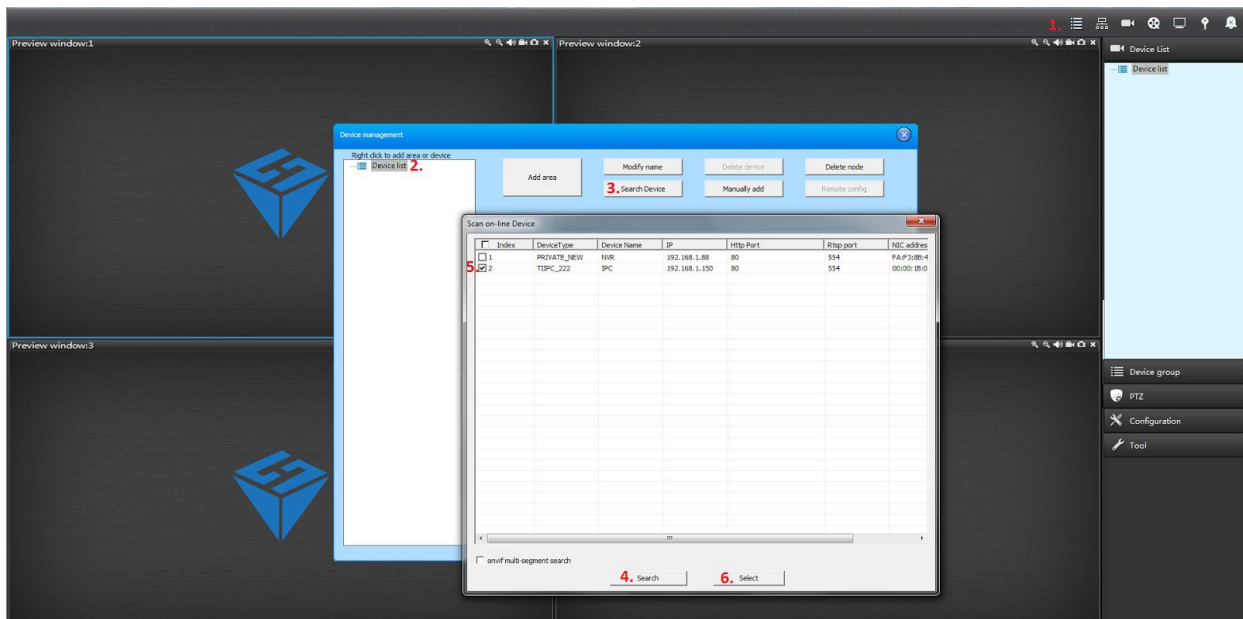
Tip: By default CMS saves files on directly on C: hard drive, creating folder with NVR name in the process. To change it click 'Basic configuration' icon in top right corner:



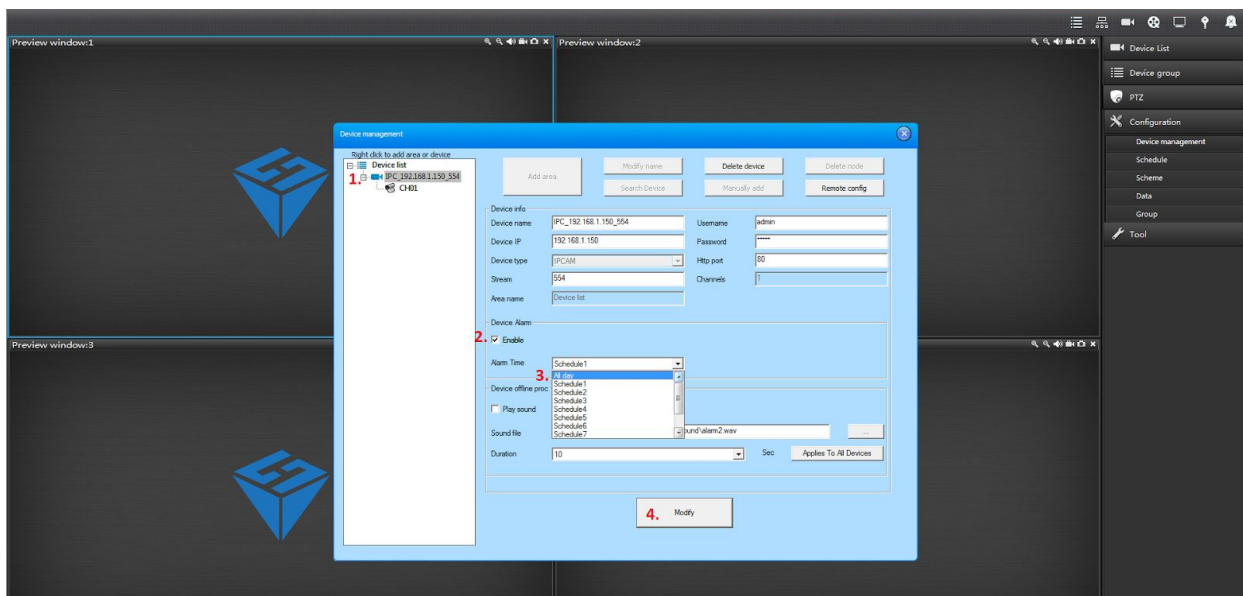
CHAPTER 5. Local recording and playback

Motion Detection Setup

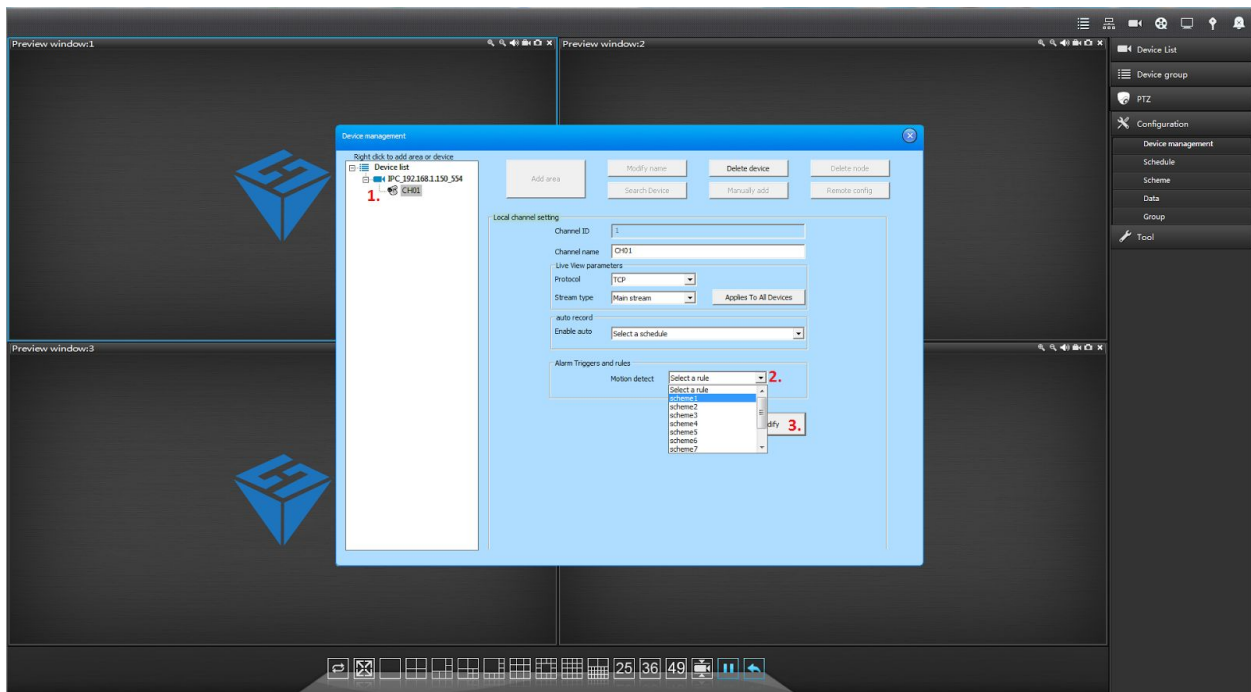
1. Go to 'Device Management' (1). Click on 'Device List' (2) and press 'Search Device' (3). Press 'Search' (4), choose your camera by ticking box (5) and press 'Select' (6).



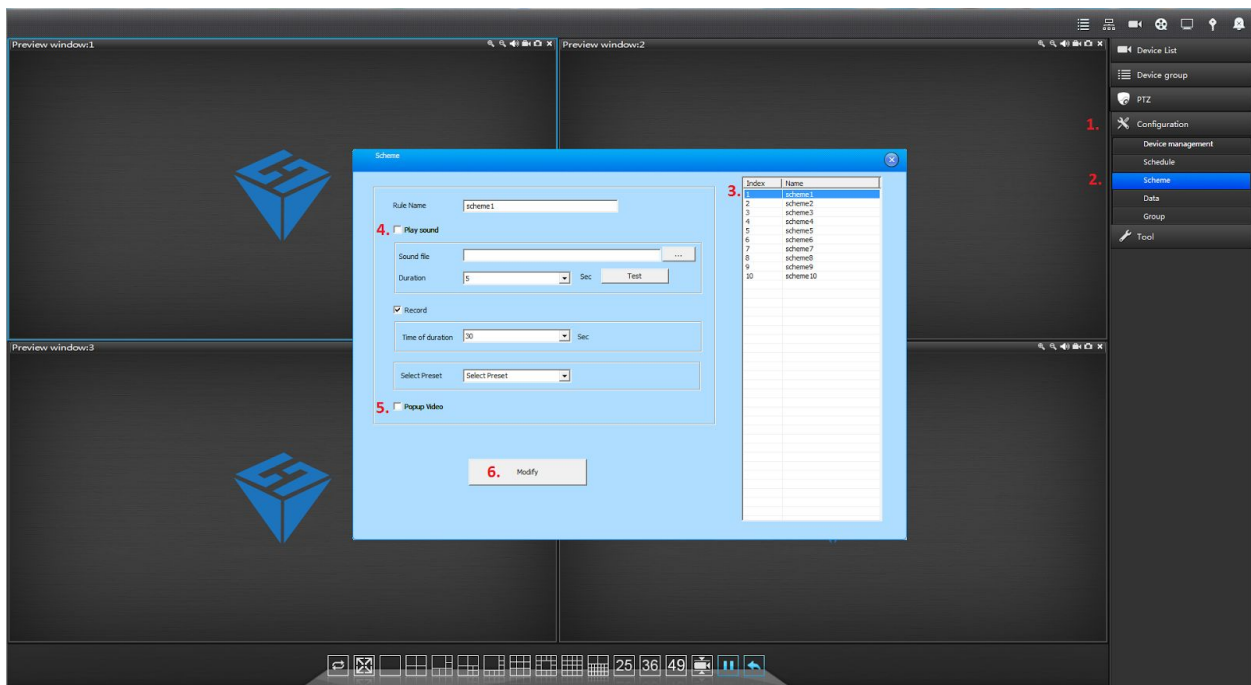
2. Select camera that you just add (1). On 'Device Alarm' tick box to enable it (2). From dropbox please select 'All Day' (3) and press 'Modify' (4).



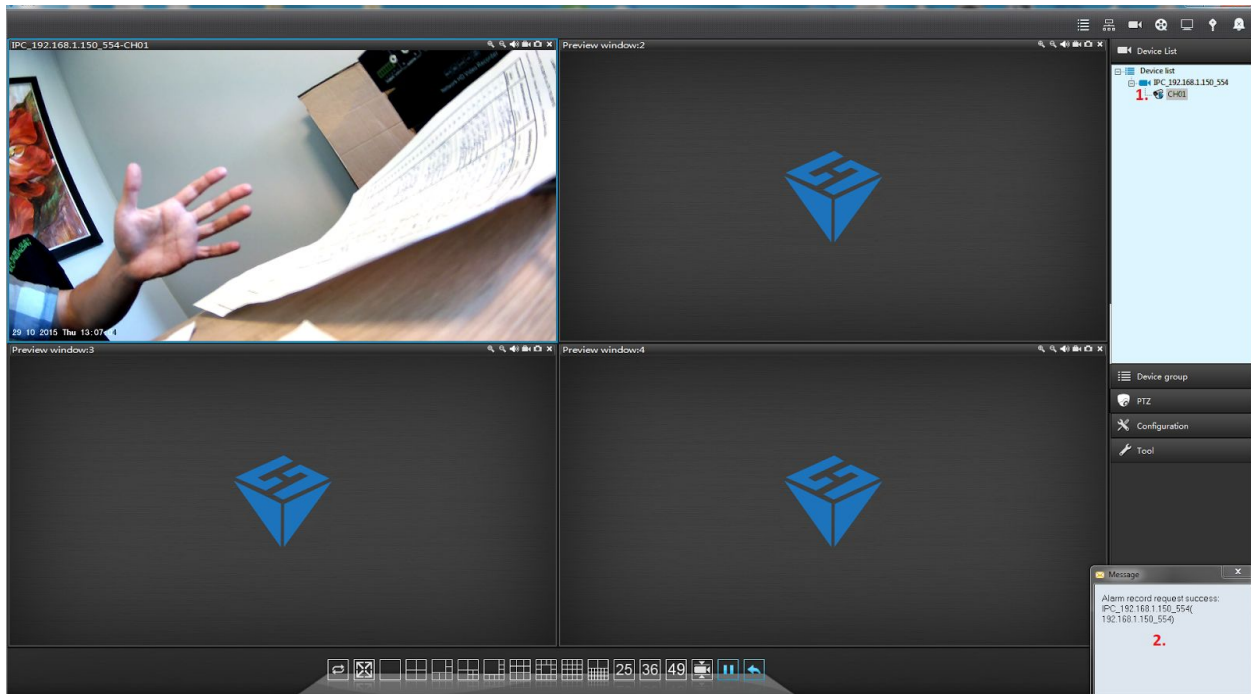
3. Select 'CH01' from camera (1). From 'Alarm Triggers and Rules' on 'Motion Detection' dropdown menu select entry 'scheme1' (2) and press 'Modify' (3).



4. Now go to 'Configuration' (1) and choose 'Scheme' (2). Select first entry (3), untick options 'Play Sound' (4), 'Popup Video' (5) and press 'Modify' (6).

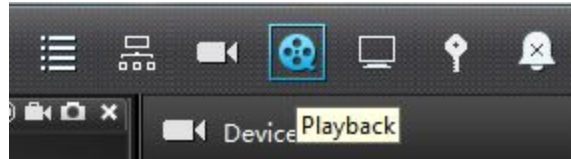


5. To record video live view need to be on. To do it please go to 'Device List', select your camera and double click on small camera icon beside 'CH01' (1). If you done all the steps correctly you should see message on bottom right of the screen (2).

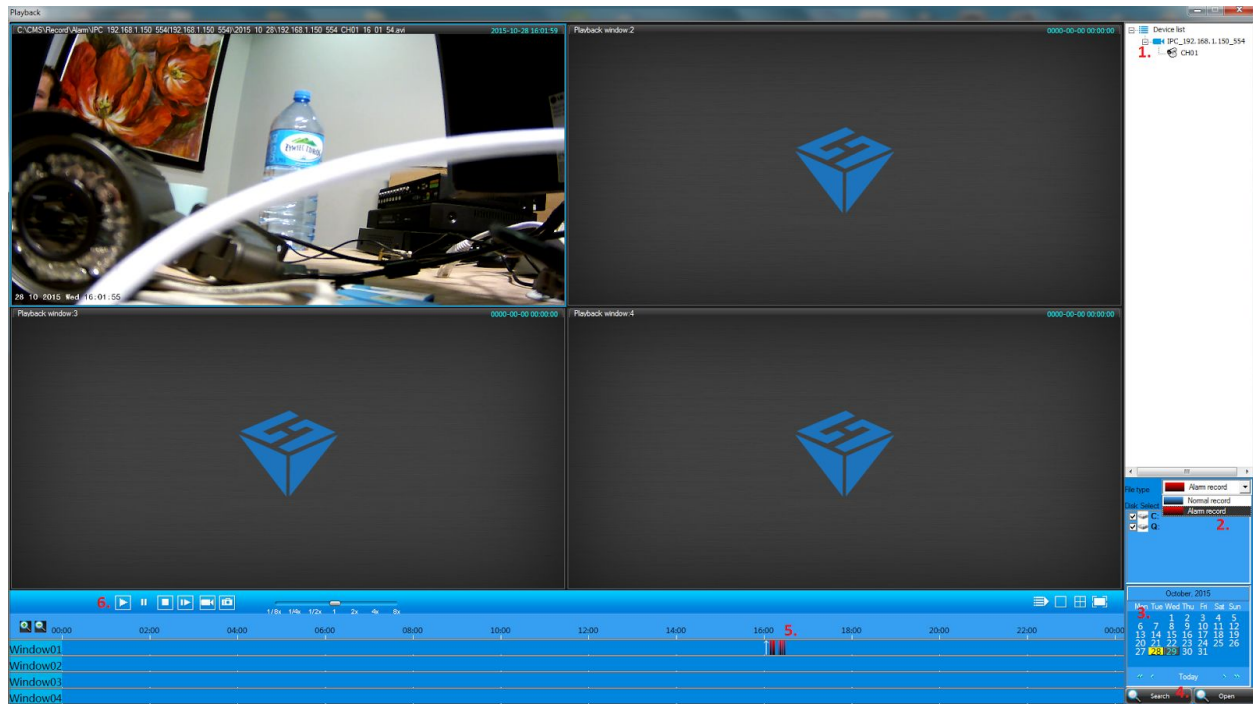


Watching recordings

1. Click on 'Playback' option from top right menu



2. Choose camera and channel (1). From 'File type' select 'Alarm Record' (2). Choose date (3) and press 'Search' (4). On time line you should see red lines (5). They are motion detection recordings. Now you can play them (6).



3. All the files by default can be found under this path: **C:\CMS\Record\Alarm**.

Tip: to change where recorded files are saved click 'Basic configuration' icon in top right corner:

