

Mini & Graphite NVR

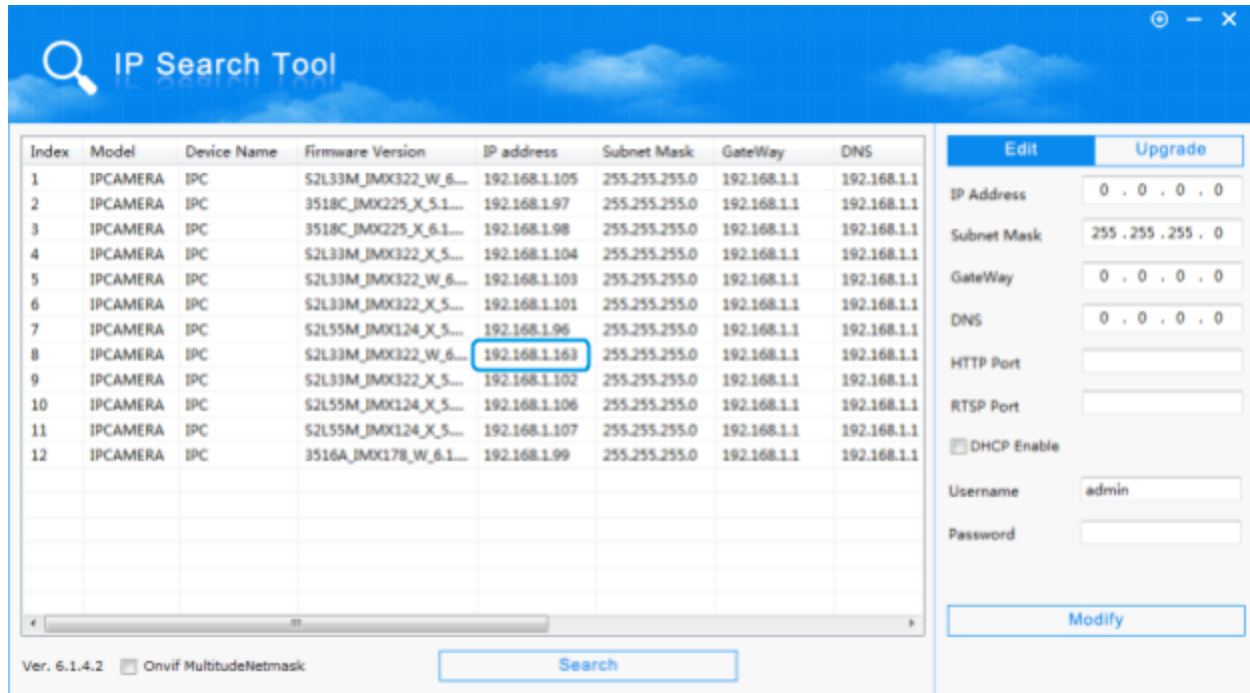
# Motion detection

---

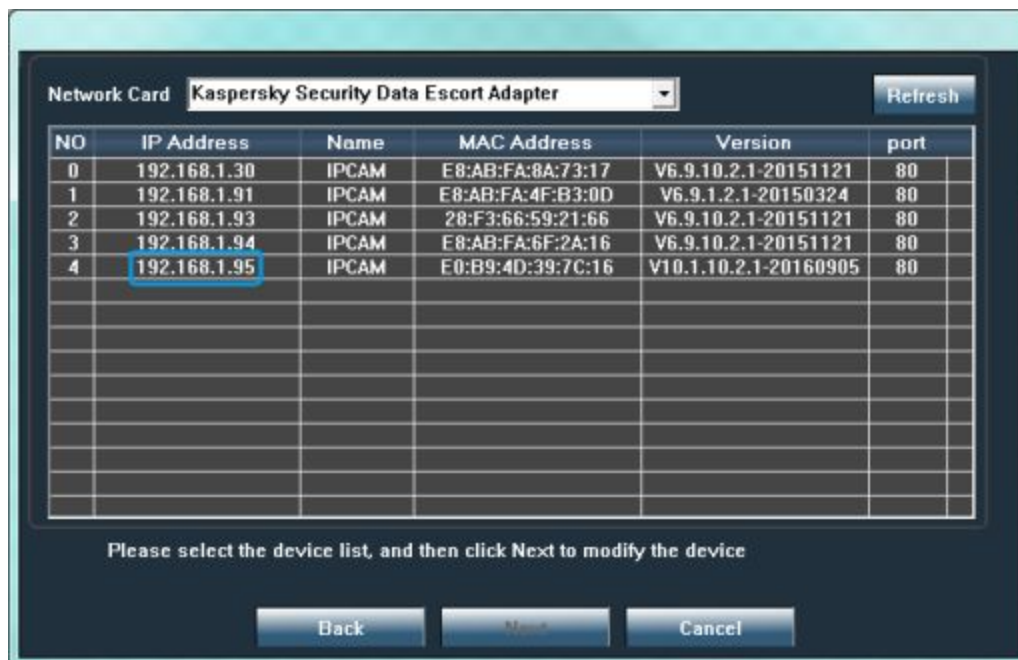
[domar.com](https://domar.com)

## Enabling motion detection on IP camera

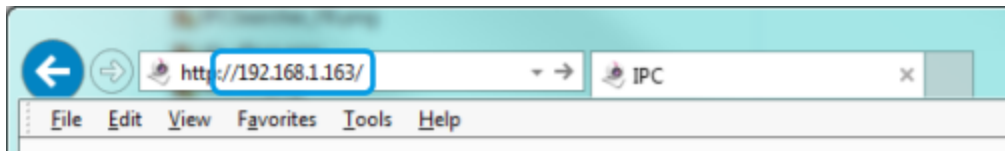
1. Open camera's website.
  - a. Check what is IP address of a camera using IPCSearcher ([download link](#)).



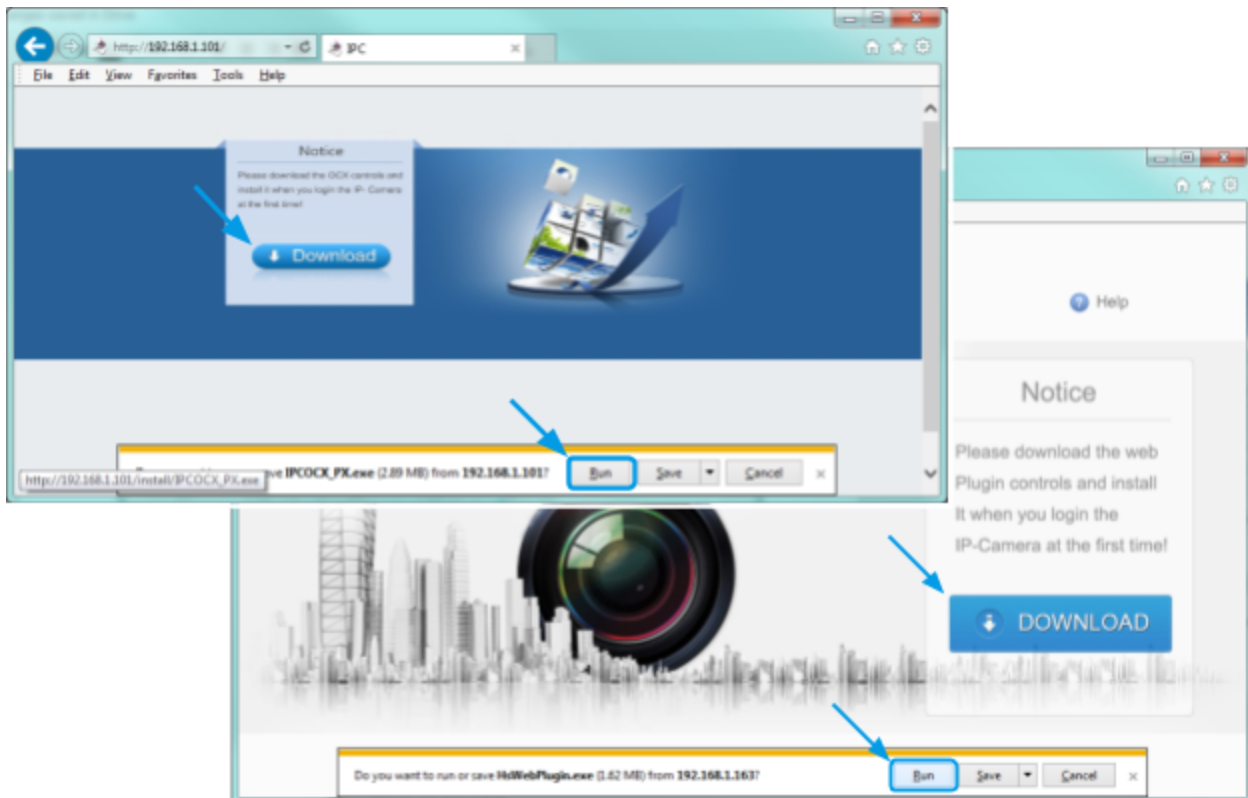
- b. For wireless IP cameras, use SearchTool ([download link](#)) software instead.



- c. Open Internet Explorer web browser.
- d. Put camera's IP address in address bar, press Enter.



- e. Download and run camera plugin.

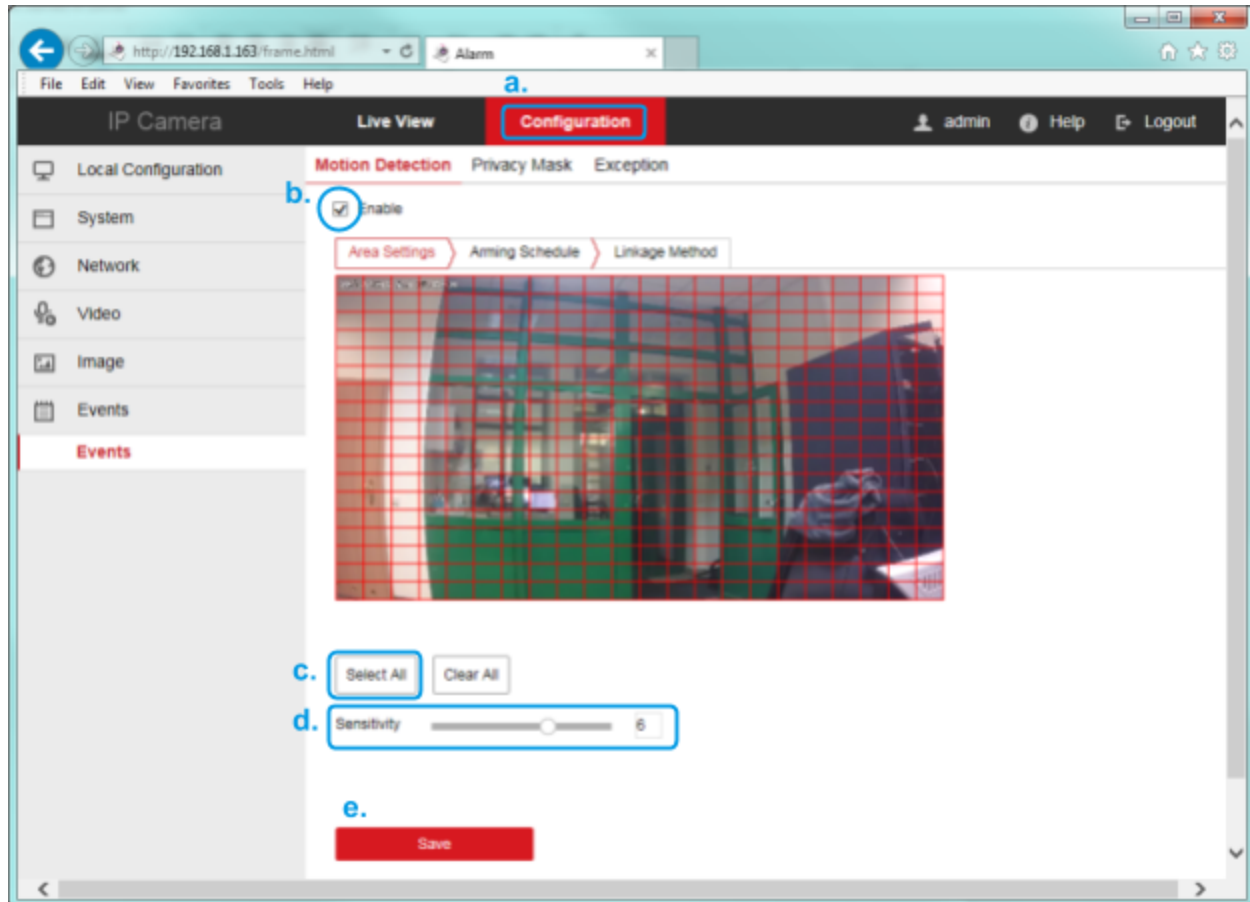


- f. Restart Internet Explorer and access camera web page again.
- g. Click 'Allow' when Internet Explorer ask you if you want to run camera's plugin.

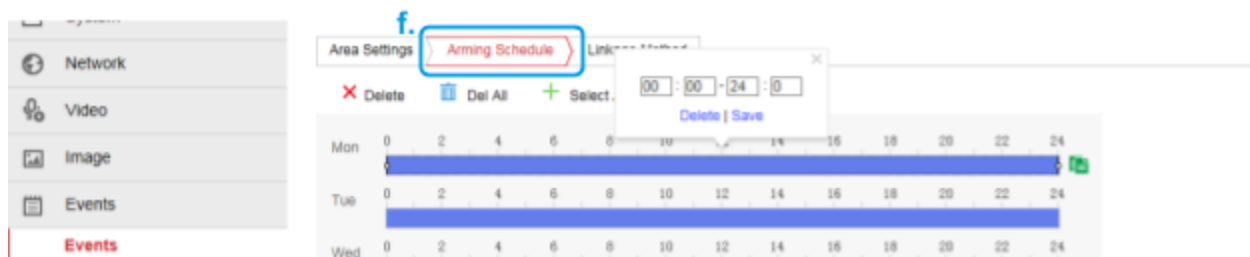


- 2. Log in, default username and password are: **admin** / **admin**.

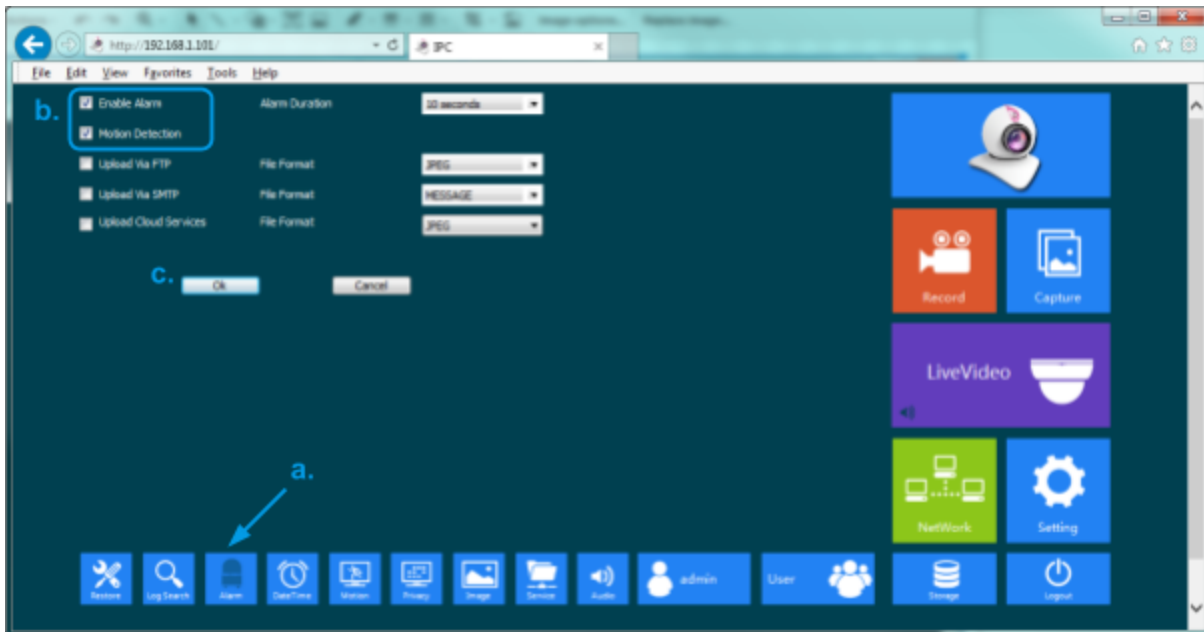
3. Enabling motion detection - IP camera (new web interface).
  - a. Go to '**Configuration**', then '**Events**'.
  - b. Enable motion detection.
  - c. Select detection area - either drag your mouse over camera's picture to select area yourself or click '**Select All**' button.
  - d. Choose '**Sensitivity**' (0 - lowest, 10 - highest).
  - e. '**Save**' settings.



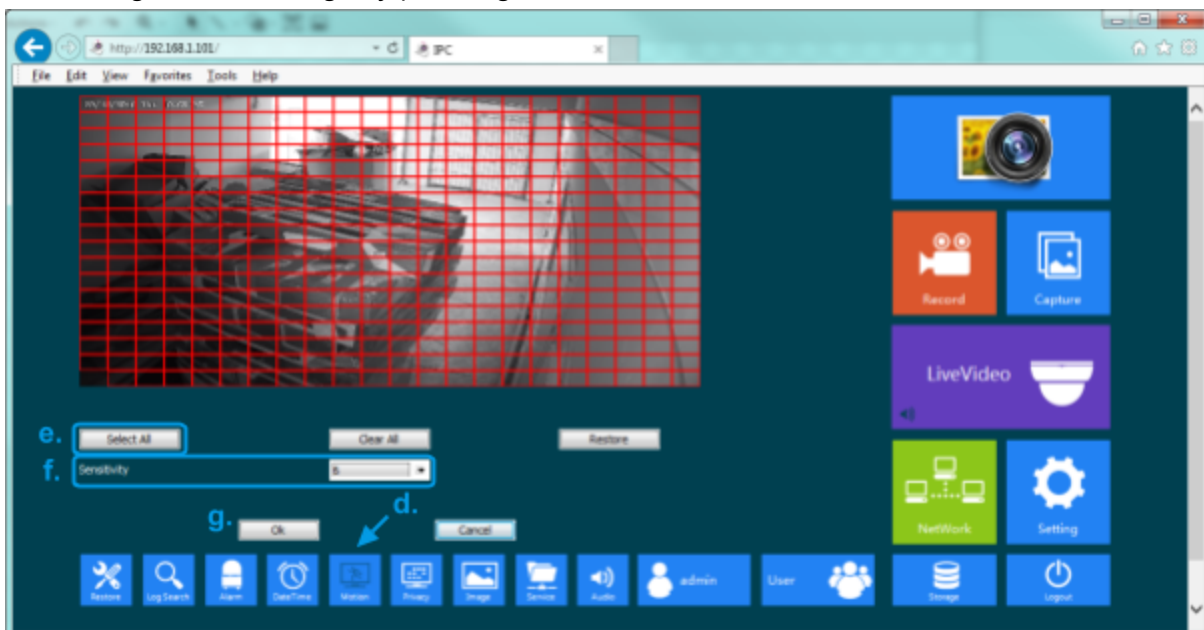
- f. Additionally you can choose when motion detection will be active by clicking '**Arming Schedule**' tab - click on a time bar to change it.



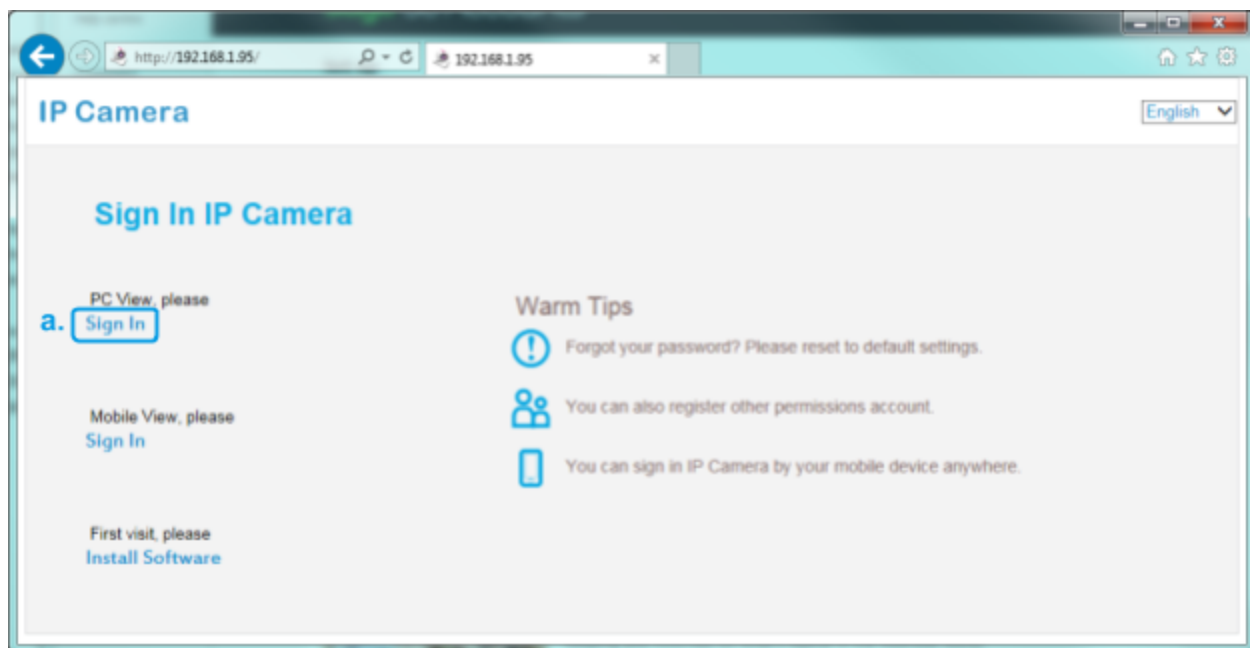
4. Enabling motion detection - IP camera (old web interface).
  - a. Go to **'Alarm'**.
  - b. Enable alarm and motion detection - tick 'Enable Alarm' and 'Motion detection' boxes.
  - c. Save settings by pressing **'OK'** button.



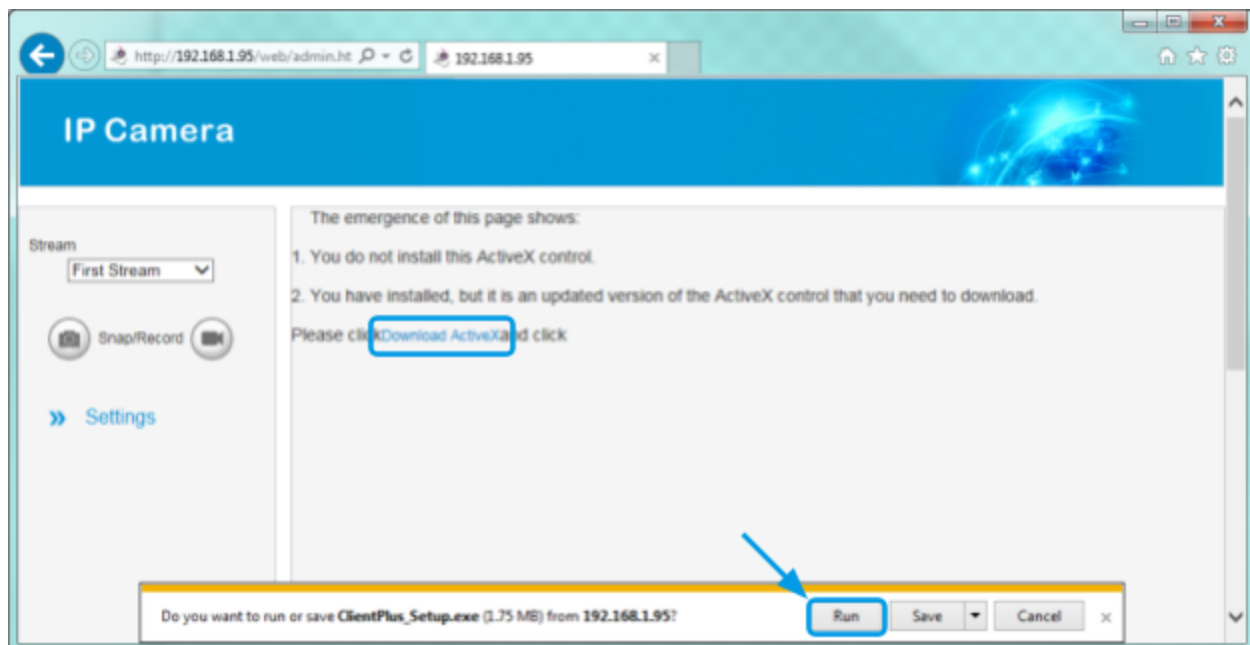
- d. Go to **'Motion'**.
- e. Select detection area - either drag your mouse over camera's picture to select area yourself or click **'Select All'** button.
- f. Choose **'Sensitivity'** (0 - lowest, 10 - highest).
- g. Save settings by pressing **'OK'** button.



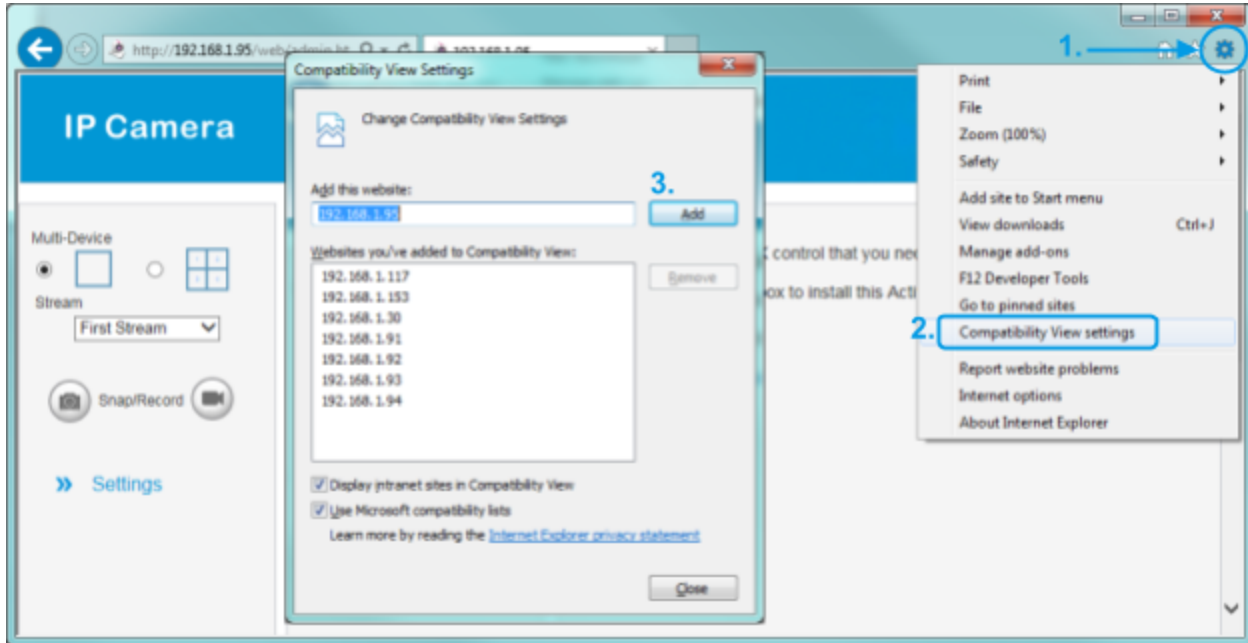
5. Enabling motion detection - wireless IP camera.
  - a. Go to PC View, click '**Sign In**'.



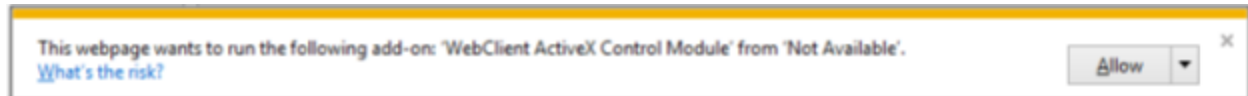
- b. Download and run ActiveX plugin.



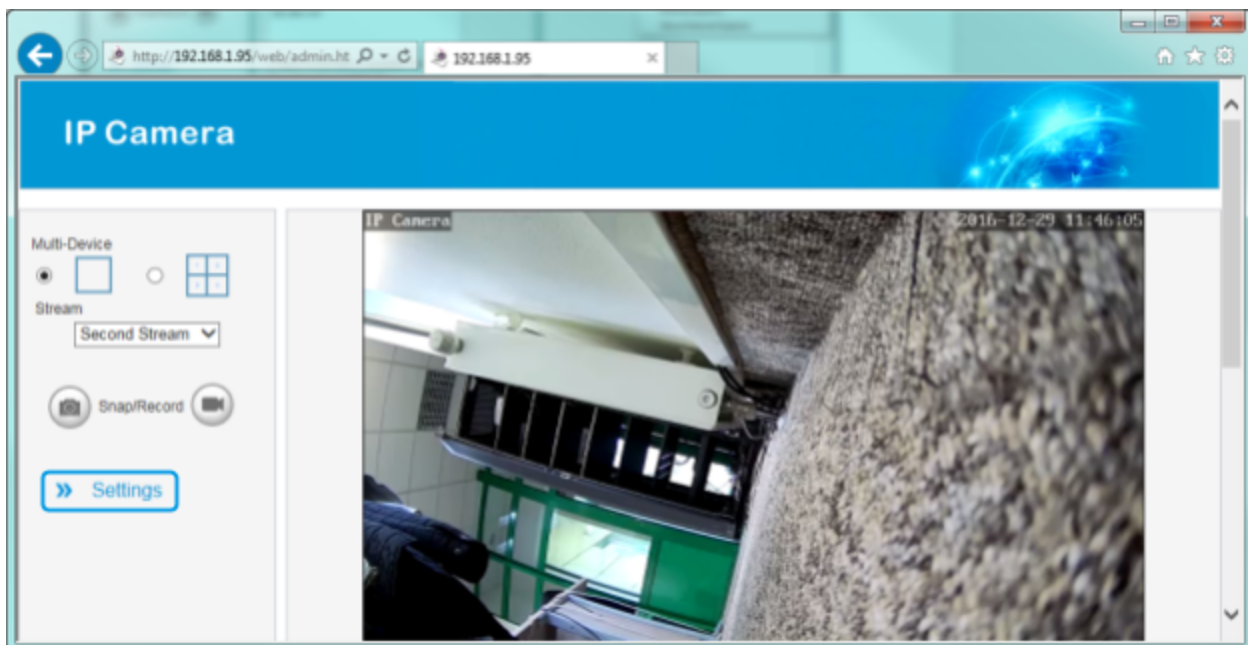
- c. Add camera's webpage to Internet Explorer's Compatibility View'.



- d. Click '**Allow**' when Internet Explorer ask you if you want to run camera's plugin.

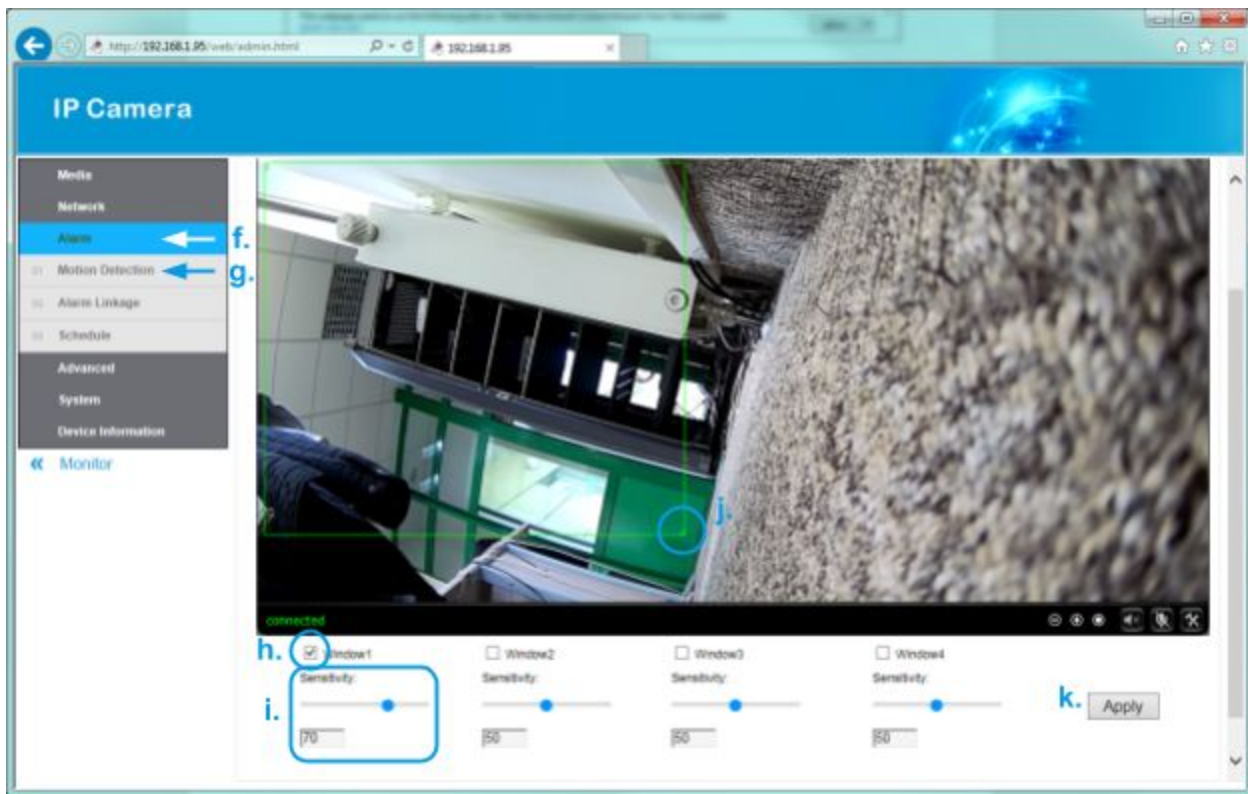


- e. Go to '**Settings**'.

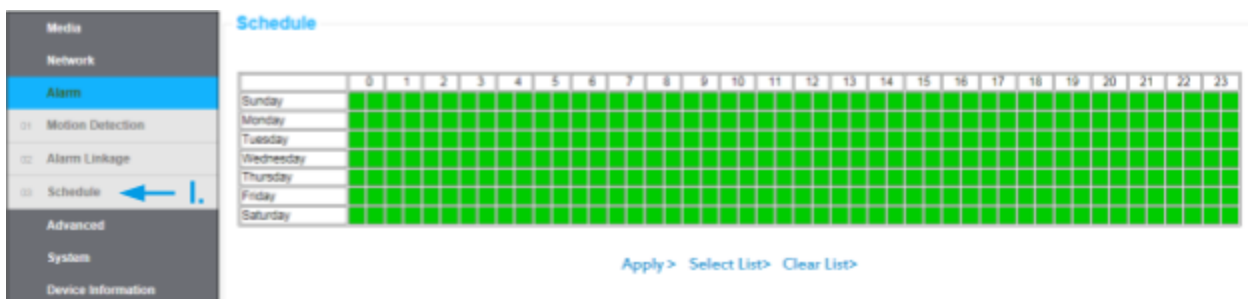




- f. From menu choose '**Alarm**'
- g. and then '**Motion Detection**'.



- h. Scroll down and enable '**Window1**'.
- i. Choose '**Sensitivity**' (0 - lowest, 100 - highest).
- j. Change size of detection area - click and drag bottom right corner of green square.
- k. Save settings by pressing '**Apply**' button.
- l. Additionally you can choose when motion detection will be active by choosing '**Schedule**' in menu - click on a timeline to activate (green) / deactivate (white) detection for chosen hour.





## Enabling motion detection on the NVR

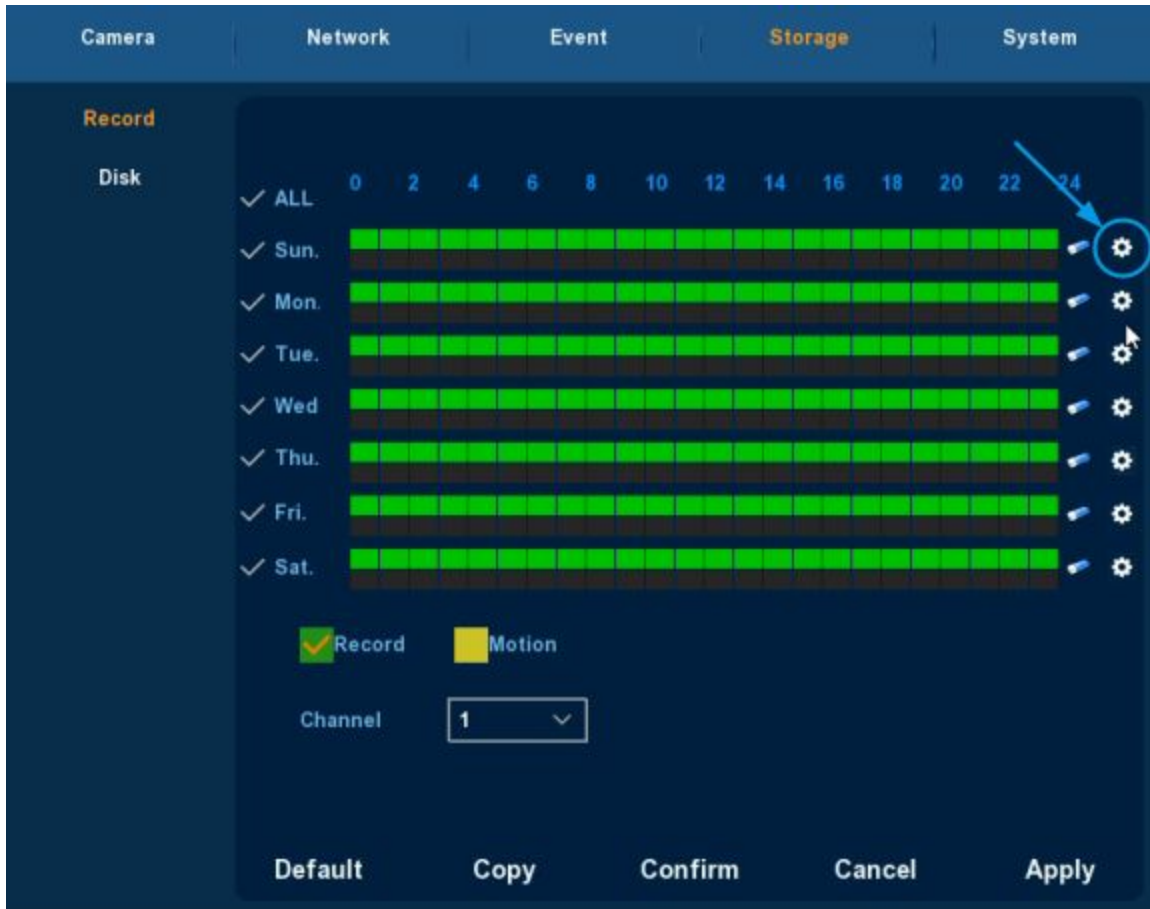
1. Go to main menu (right click on screen, choose '**Main menu**').
2. Click on '**Event**'.

The screenshot shows the 'Event' menu in an NVR interface. The 'Motion Detection' section is active, displaying settings for channel 1. The settings include: Channel (1), Sensitivity (7), Enable detection (checked), Buzzer alarm (checked), Buzzer Time(sec) (1), Record Channel (checked), and Record Time(sec) (60). The 'Confirm' button is highlighted with a mouse cursor.


Exception	Channel	Sensitivity	Enable detection	Buzzer alarm	Buzzer Time(sec)	Record Channel	Record Time(sec)
3	1	7	✓	✓	1	✓	60

- a. Choose channel (camera number) which you want to detect motion.
- b. Choose sensitivity (0 - lowest, 10 - highest).
- c. Enable motion detection (orange tick - enabled, grey - disabled).
- d. (Optional) enable buzzer and decide how long alarm sound should be played.
- e. Enable recording on motion and set post-recording time.
- f. Save settings by clicking '**Confirm**'.

3. Change recording schedule.
  - a. Go to '**Storage**' (from Main menu).
  - b. Choose camera '**Channel**' (number).
  - c. Click gear icon for choosen day.



- d. Enable motion detection recordings by ticking '**Motion**' and (optional) disable continuous recordings - '**Record**'.

 Record Schedule

Current Set Week : Sunday

Schedule 1	<input type="text" value="00 : 00 - 24 : 00"/>	<input checked="" type="checkbox"/> Record	<input checked="" type="checkbox"/> Motion
Schedule 2	<input type="text" value="00 : 00 - 00 : 00"/>	<input checked="" type="checkbox"/> Record	<input checked="" type="checkbox"/> Motion
Schedule 3	<input type="text" value="00 : 00 - 00 : 00"/>	<input checked="" type="checkbox"/> Record	<input checked="" type="checkbox"/> Motion
Schedule 4	<input type="text" value="00 : 00 - 00 : 00"/>	<input checked="" type="checkbox"/> Record	<input checked="" type="checkbox"/> Motion
Schedule 5	<input type="text" value="00 : 00 - 00 : 00"/>	<input checked="" type="checkbox"/> Record	<input checked="" type="checkbox"/> Motion
Schedule 6	<input type="text" value="00 : 00 - 00 : 00"/>	<input checked="" type="checkbox"/> Record	<input checked="" type="checkbox"/> Motion

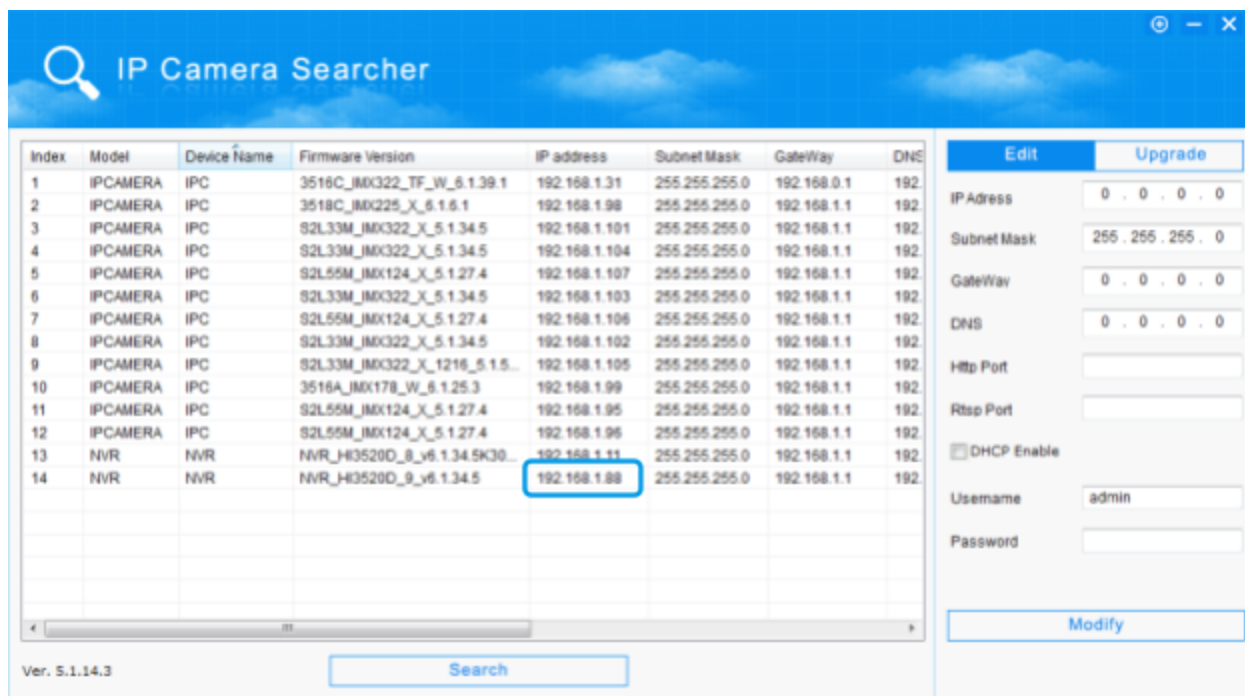
Use to:

☒ ALL   ☒ Sun.   ☒ Mon.   ☒ Tue.   ☒ Wed.   ☒ Thu.  
☒ Fri.   ☒ Sat.

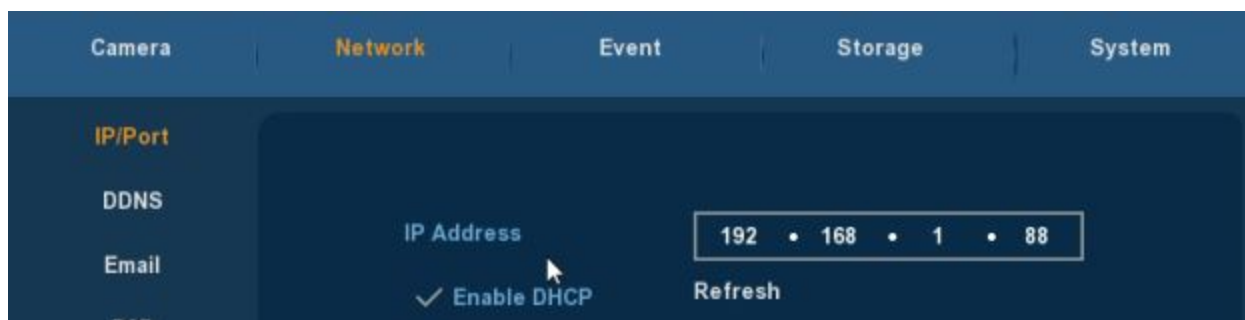
Save   Cancel

## Enabling motion detection on the NVR from computer

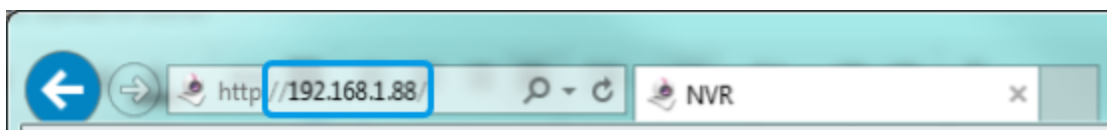
1. Open NVR's website.
  - a. Check what is IP address of a NVR using IPCSearcher ([download link](#)).



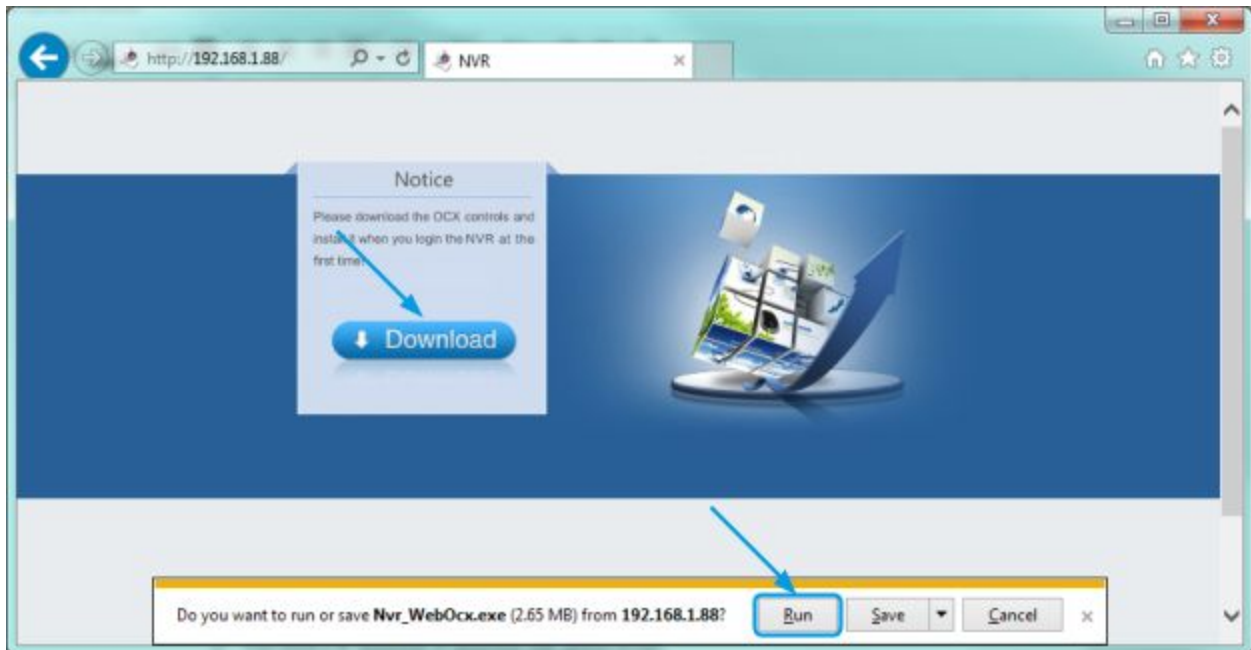
Or check is on the NVR by going to **Main menu -> Network**.



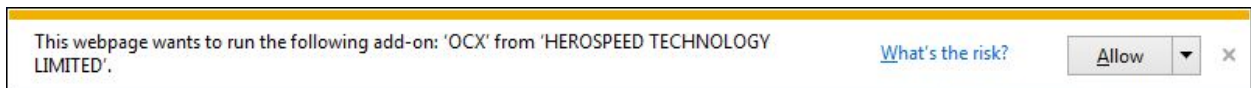
- b. Open Internet Explorer web browser.
- c. Put NVR's IP address in address bar, press Enter.



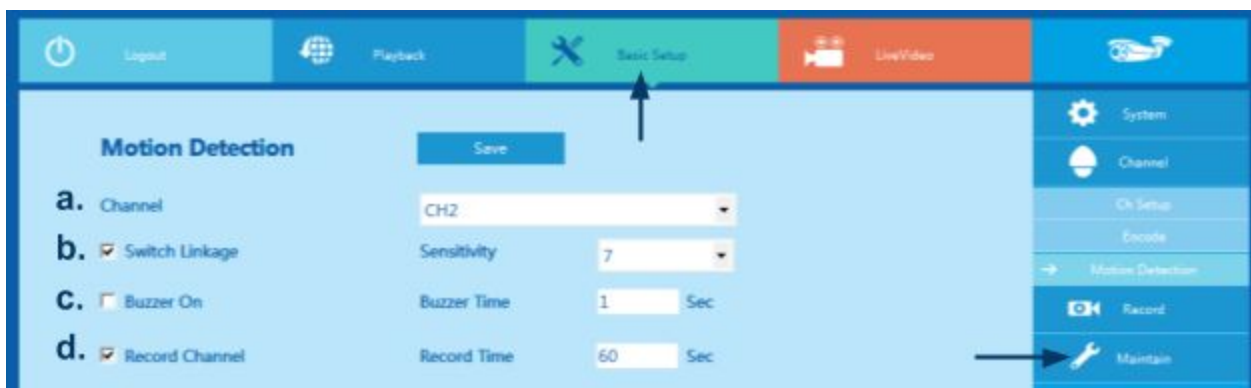
- d. Download and run NVR's plugin.



- e. Restart Internet Explorer and access camera web page again.  
f. Click '**Allow**' when Internet Explorer ask you if you want to run OCX plugin.

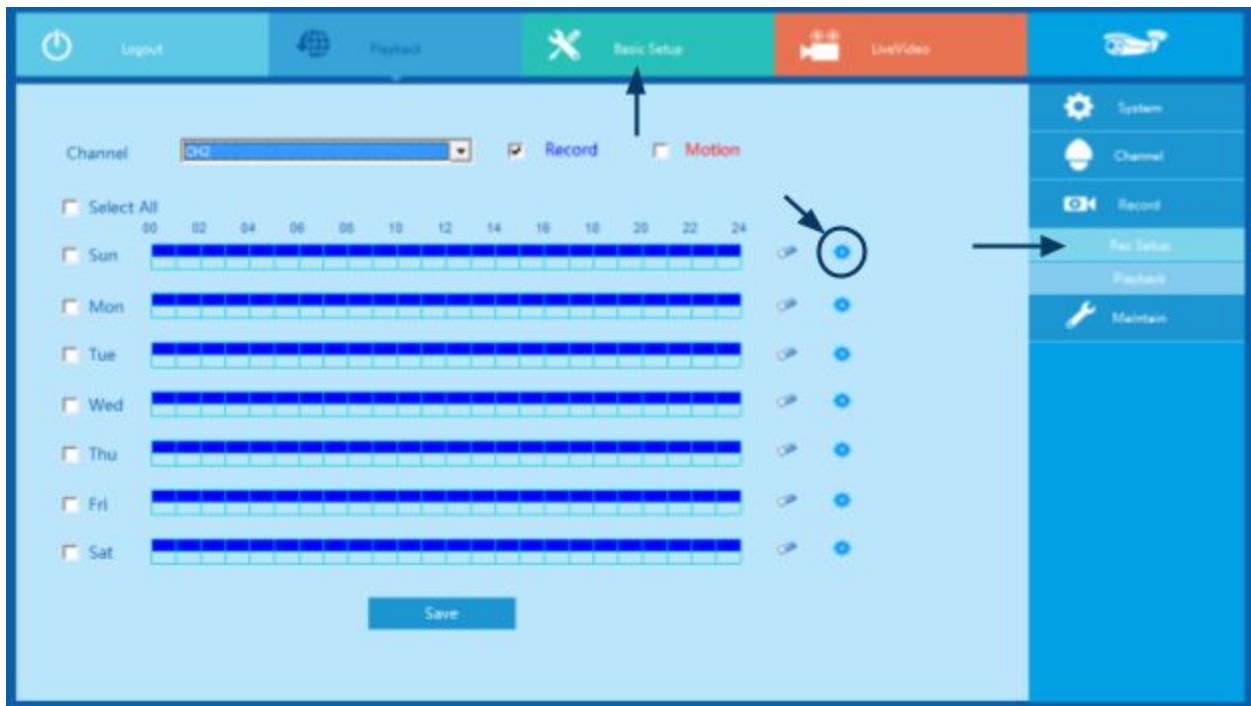


2. Log in, default username and password are: **admin** / **12345**.  
3. Go to **Basic Setup** -> **Channel** -> **Motion detection**.



- a. Choose '**Channel**' (camera number) which you want to detect motion.

- b. Enable motion detection - tick '**Switch Linkage**' box.  
Choose sensitivity (0 - lowest, 10 - highest).  
**Note:** camera's motion detection settings takes priority over NVR's.
  - c. (Optional) enable buzzer - '**Buzzer On**' and decide how long alarm sound should be played.
  - d. Enable recording on motion - '**Record Channel**' and set post-recording time - '**Record Time**'.
  - e. Save settings by clicking '**Save**'.
4. Change recording schedule.
  - a. Go to **Basic Setup** -> **Channel** -> **Motion detection**.
  - b. Choose '**Channel**' (camera number) which you want to detect motion.
  - c. Click gear icon for choosen day.



- d. Enable motion detection recordings by ticking '**Motion**' and (optional) disable continuous recordings - '**Record**'.

