

Zxtech IP Camera

First Login from Internet Explorer Browser

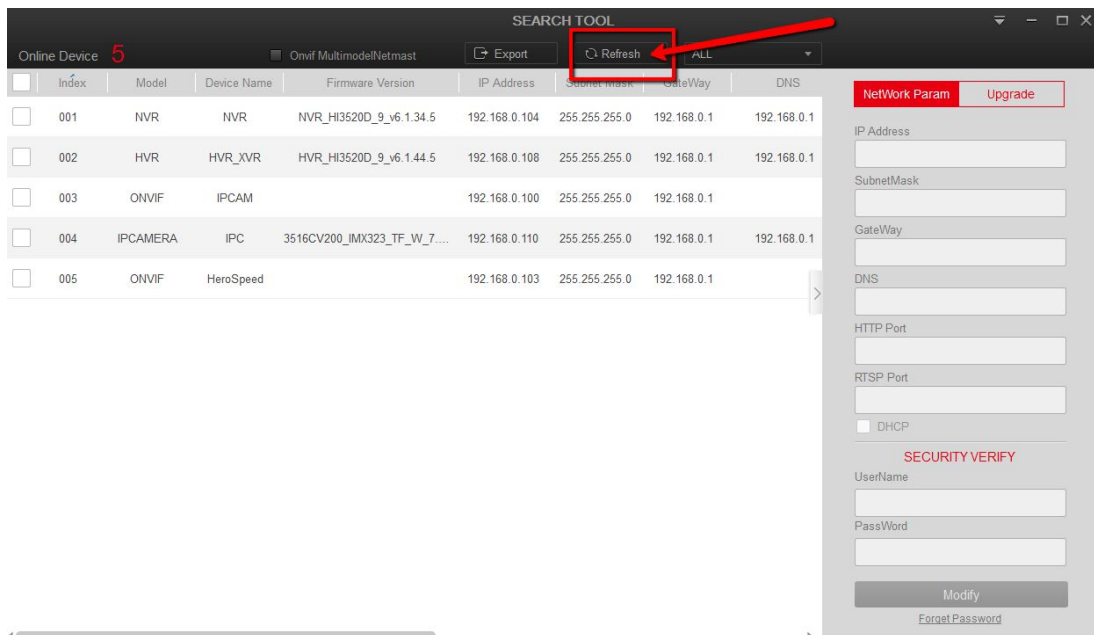
domar.com

First Login from Internet Explorer Browser

1. First you will need to find out what is your camera IP address. To do this please install Search Tool:

https://domar.com/download/TECH_PAGES_FILES/IPC/SearchTools/IPSearchTool_8.2.11.5.exe

After installation please run software and click “**Refresh**”

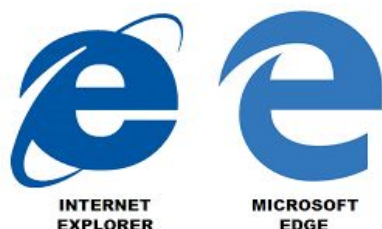


You can also choose to find only IP Cameras in your network by clicking on “**ALL**” and select “**IPC**”

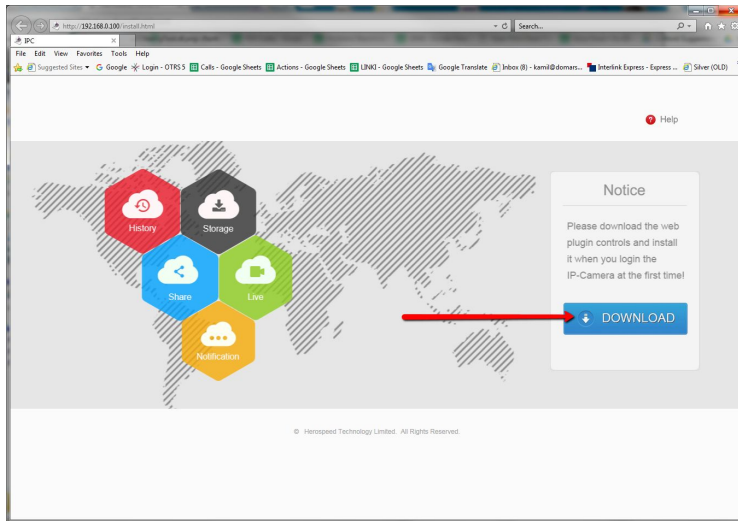
Run “**Internet Explorer**” Browser and enter camera IP address on address bar.

!NOTE!

If you have Windows 10 please make sure you find and run “**Internet Explorer**”. As a default your Windows 10 have “**Edge**” Browser that have very similar icon to “**Internet Explorer**”



2. Install OCX from camera if needed.



At the bottom you will see message. It will ask you what you want to do. Please click **“Run”**

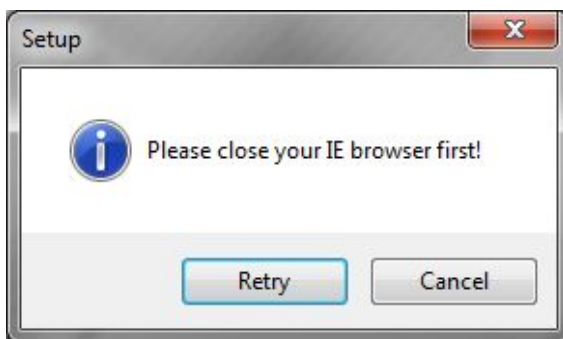


After downloading it will automatically start to install OCX.

!NOTE!

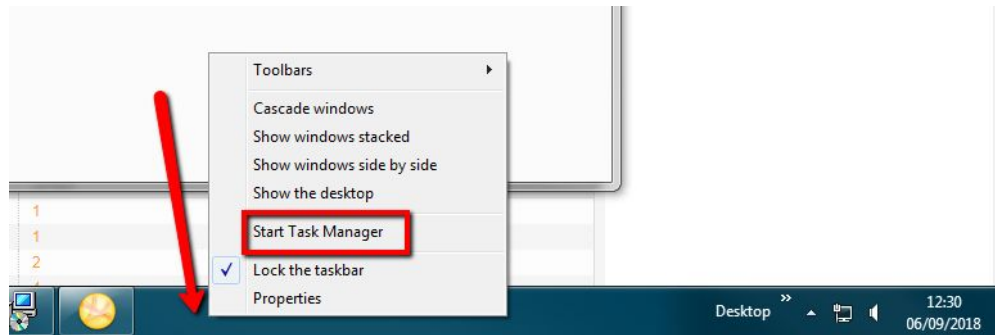
Sometimes it will ask to close **“Internet Explorer”** to continue installation.

You will see this message:



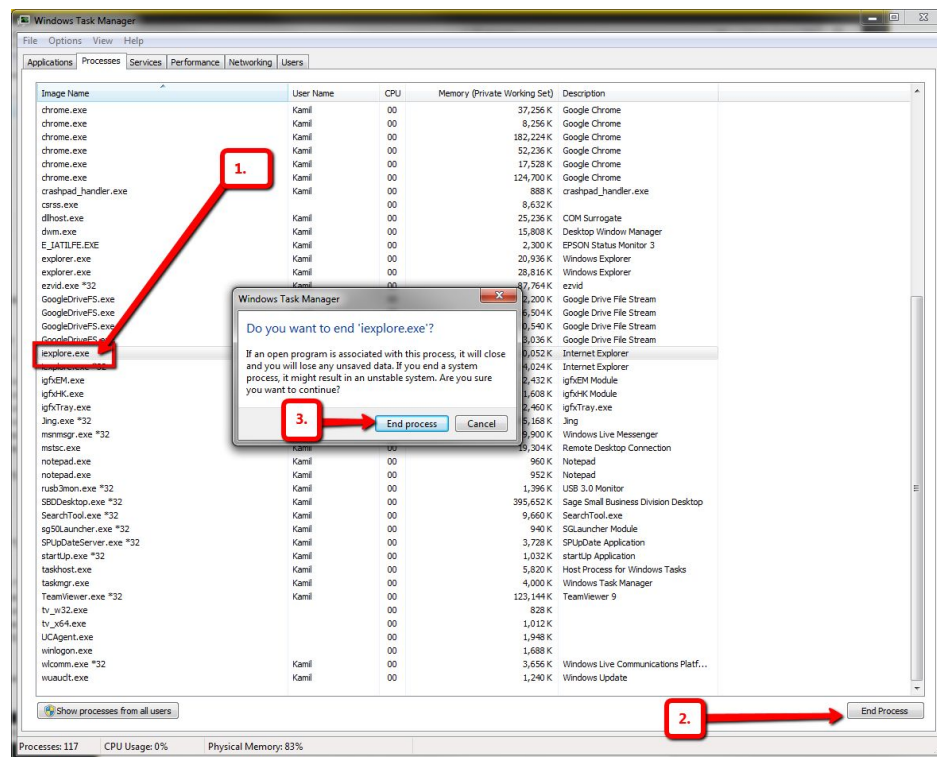
Just close your browser and click **“Retry”** If you can't perform installation than probably your Browser is working still on background and you need to close process. To do this please follow this steps:

- a) Right-click on Taskbar and select “**Start Task Manager**”

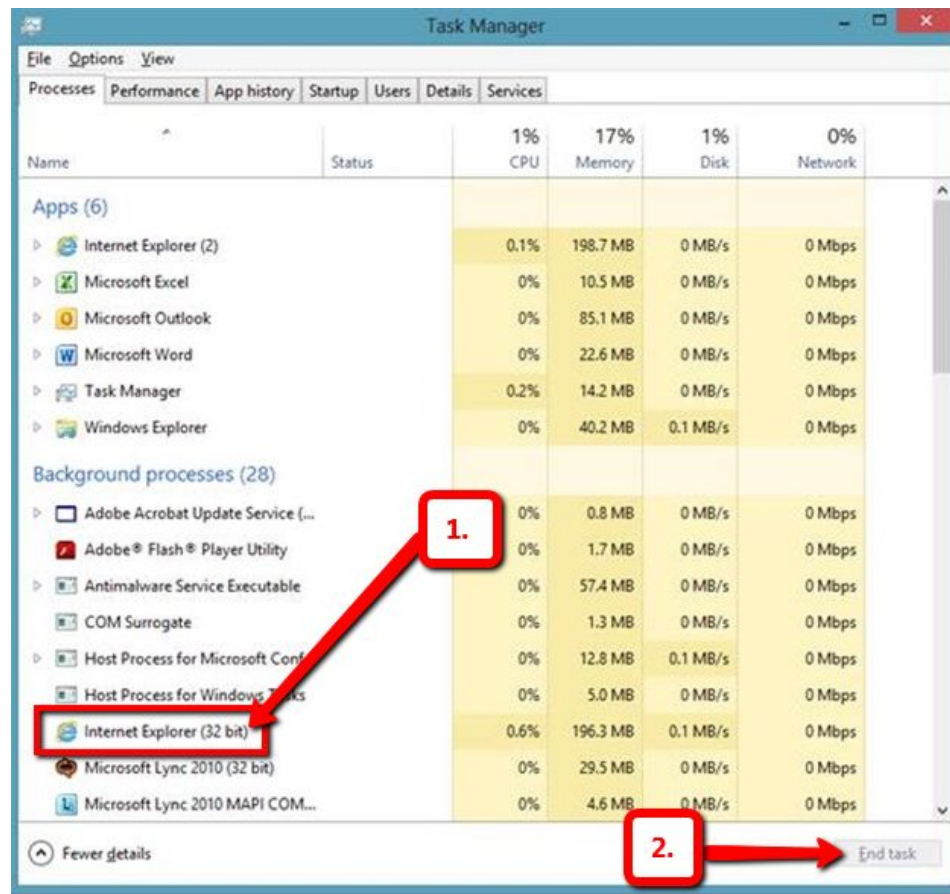


- b) New window will open.

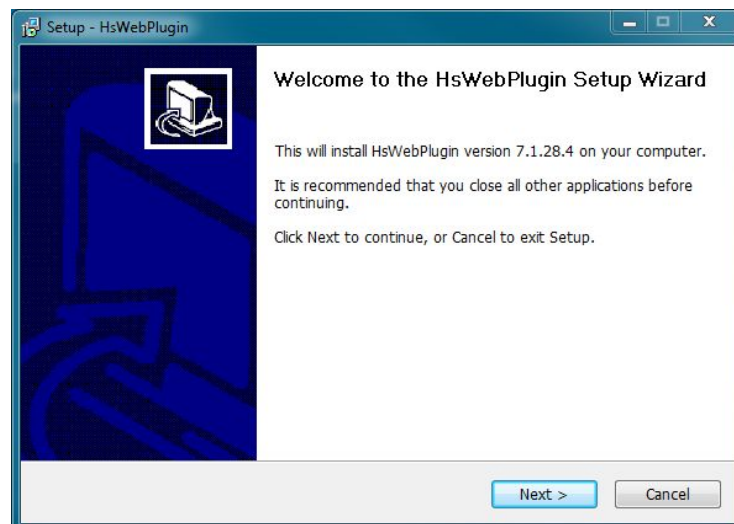
For Windows lower than 10 - Under processes tab please find and select “**explorer**”. Click on “**End Process**” and confirm ending process.



For Windows 10 - Please expand “Background Processes” find and click “Internet Explorer”. Click on “End Task”




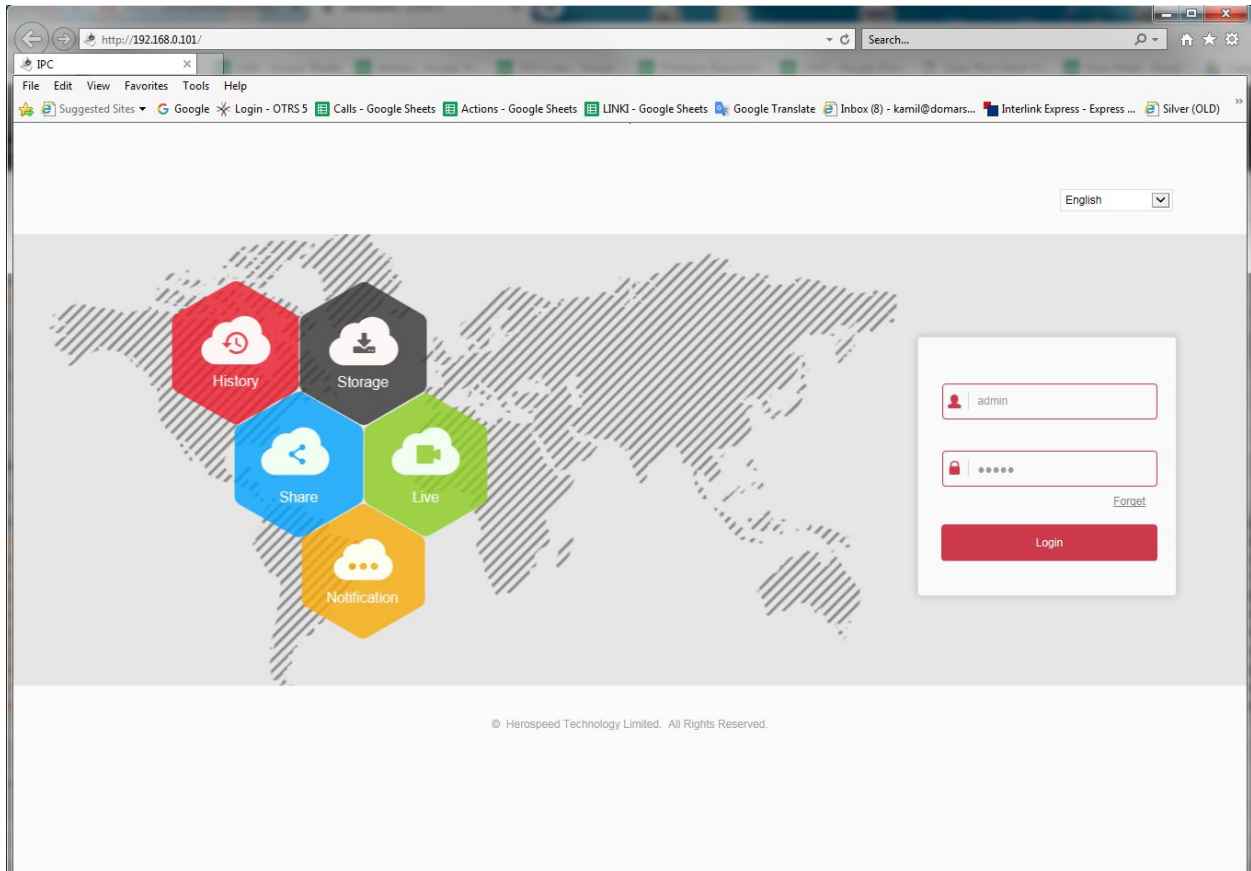
Now you can install your OCX. You should see this window:



Please go through installation process and reopen your “Internet Explorer” and enter camera IP again.

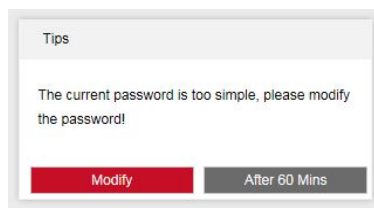
3. If you manage to install OCX you will need to do one more thing. On top right corner click

on gear icon “**Tools**” . Choose “**Compatibility View Settings**” and add camera IP address to the list. Page should refresh itself and you should see this now:



Enter username “**admin**” and password “**admin**”, click “**Login**”

Camera will suggest to modify password. Click on “**Modify**” button if you decide to do it or click on “**After 60 Mins**” if you decide not to.



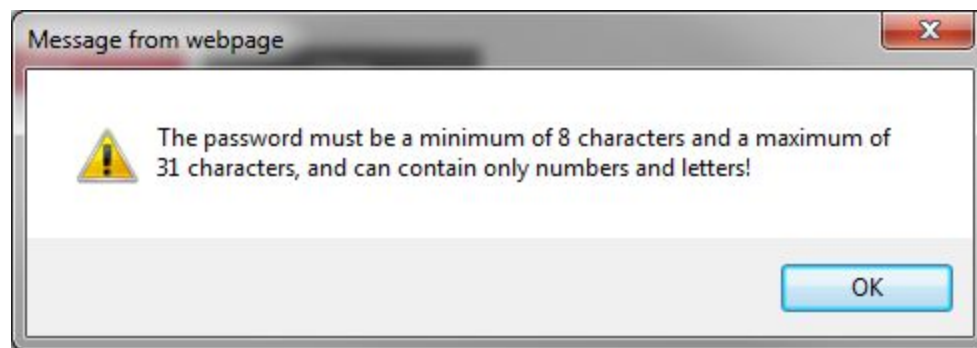
We recommend to change password for your camera on the first login attempt for more secure system. You can also leave it as a default to make easier setup.

If you decide to change it please follow instructions below and make sure you won't miss any of the step. This will help you reset password in case you forget it.

4. After clicking “**Modify**” you will be asked few questions that you need to fill up.

a) New password

Enter your new password. Please make sure password is between 8-31 characters long and you can use **ONLY** letter and numbers. **DO NOT** use special characters like “?”; “!” or **spaces**. This is also case sensitive.



b) Confirm Password

Confirm your password

c) Security issue 1-3

Here you can choose up to 3 security questions. Select what is best for you and enter answers for them of your choice. Please make sure you will remember answer how you wrote them, this is case sensitive. This is optional but we recommend to do it. If you forget your password this will be fastest way to restore it.

d) Secure Mailbox

Enter your best email address. If you forget your password you will need use this email address to restore it.

PICTURE ON NEXT PAGE

The image shows a user registration form with the following fields and labels:

- User Name:** admin
- User Type:** Admin (dropdown menu)
- Password:** [Redacted] (Label **a.** points to this field)
- Confirm Password:** [Redacted] (Label **b.** points to this field)
- ☒ Whether the following issues are set
- Security issue1:** What is the name of your first pet? (dropdown menu)
- Answer1:** CCTV
- Security issue2:** What was your nickname in childhood? (dropdown menu)
- Answer2:** CCTV (Label **c.** points to this field)
- Security issue3:** Which team do you like best? (dropdown menu)
- Answer3:** CCTV
- Secure Mailbox:** [Redacted] (Label **d.** points to this field)

!NOTE!

Please be aware that changing your password you will be fully responsible for doing it.

Please make sure you will setup your password correctly.

Please make sure password is between 8-31 characters long and you can use **ONLY** letter and numbers. **DO NOT** use special characters like “?”; “!” or **spaces**. This is also case sensitive.

Please fill in all the necessary questions and enter your best email.

This will prevent unnecessary cost in case of forgetting your password. Please be aware if you make any mistakes along the way and you won't be able to restore your password, camera will have to be sent to our shop for resetting it. If you need to send camera please be also aware that charge may apply to do it. We will also have to charge for posting it back. For more information and price please contact us first.

Hope this will help. If you need any more questions please email us on techsupport@domar.com

Domar Technical Support