

Zxtech Range

How To Add Device To VMS Lite By Local IP Address

domar.com

How To Add Device To VMS Lite By Local IP Address

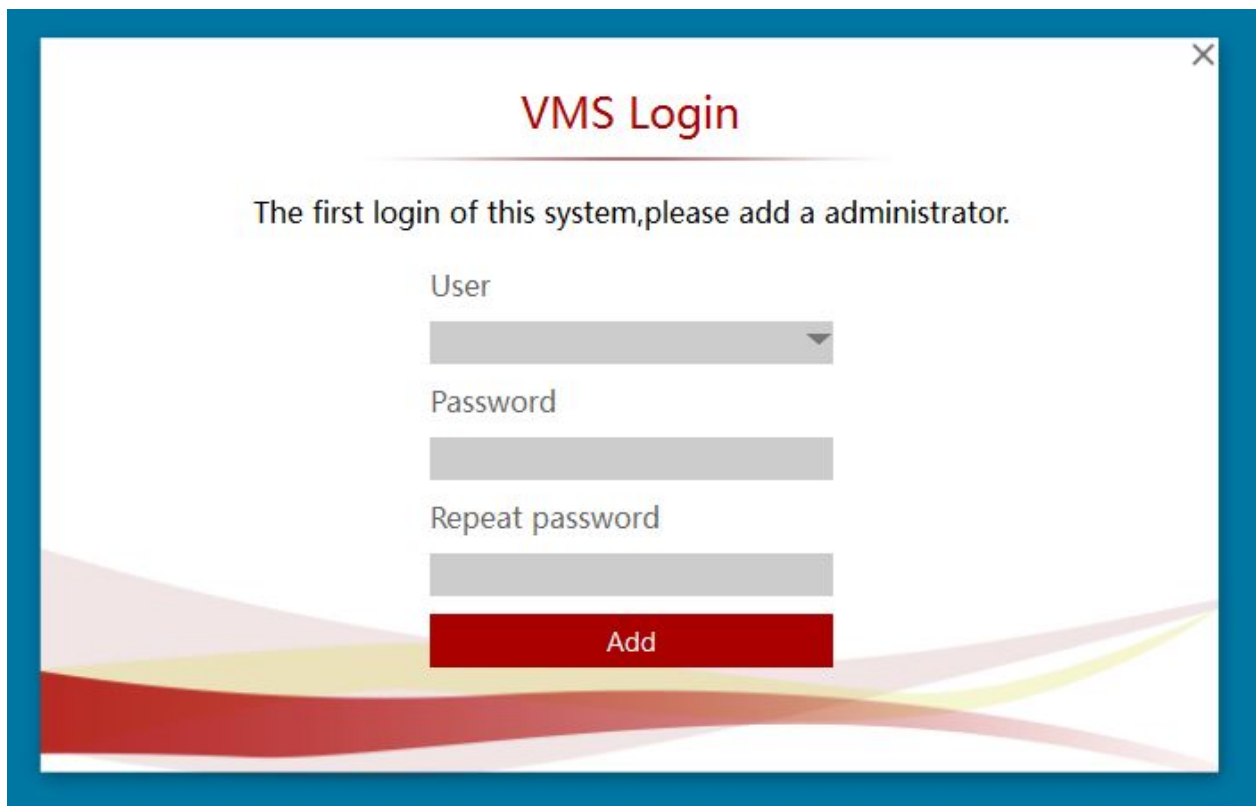
1. First we need to install VMS Lite to your PC/Laptop

Please follow link below to download software:

https://domar.com/download/TECH_PAGES_FILES/mini_NVR/CMS-VMS-software/VMSLite_Setup_2018_8.2.19.3.exe

After installation please run software.

2. When you run VMS Lite for the first time you will be asked to create new user and password for it.



The screenshot shows a window titled "VMS Login" with a close button (X) in the top right corner. The text inside the window says "The first login of this system, please add a administrator." Below this text are three input fields: "User", "Password", and "Repeat password". Each field has a grey rectangular box with a small downward arrow on the right side. At the bottom of the form is a red button labeled "Add". The background of the window has a decorative wavy pattern in shades of red and yellow.

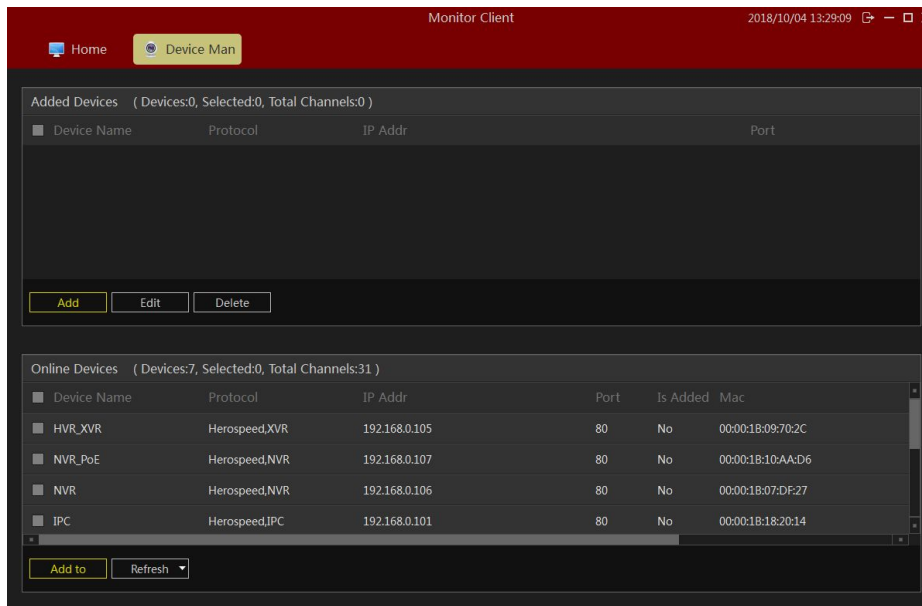
!NOTE!

Our recommendation will be something that you can easy to remember like:

User: **admin**

Password: **12345**

3. After creating account we can add your device to VMS Lite. Please click on “**Device**”. You should see this:

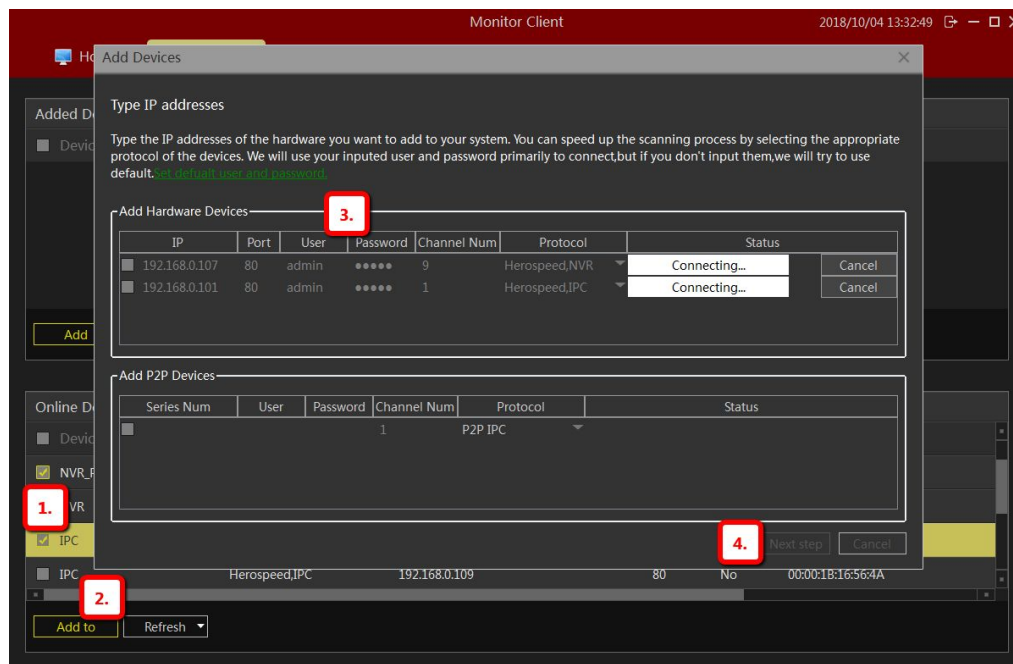


4. From the list please choose device you wish add to your VMS Lite (1.). Click on “**Add to**” (2.) and enter username and password (3.) then click “**Next Step**” and “**Add**” (4.).

!NOTE!

Please remember that default password for your devices are:

NVR: admin & 12345 CAMERA: admin & admin

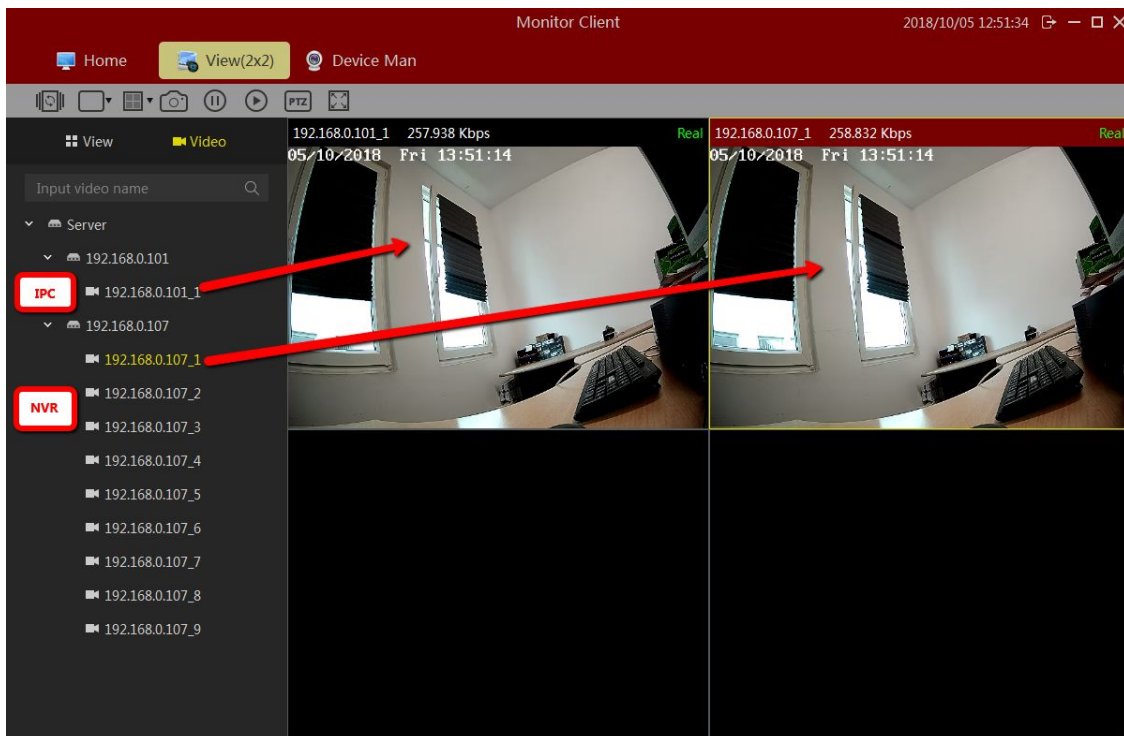


!NOTE!

Add Hardware Devices							
	IP	Port	User	Password	Channel Num	Protocol	Status
<input type="checkbox"/>	192.168.0.107	80	admin	•••••	9	Herospeed,NVR	Connect failed Try again
<input checked="" type="checkbox"/>	192.168.0.101	80	admin	•••••	1	Herospeed,IPC	Connect ok

If you make a mistake entering password or username please retype it again and click “**Try Again**”. Now it should connect to your device successfully.

- After adding your device you can go back to “**Home**” at the top of the VMS Lite. Choose “**Live**” option. On left you will see list of your devices. In our example we add two - One NVR and one Camera. Like you see in the picture below each devices have specific channels number. Camera have only one channel and NVR in this example have 9. To see live footage you need to click on the specific channel number you want to see and drag it to one of the window.



Hope this will help. If you need any more questions please email us on techsupport@domar.com

Domar Technical Support