

Zxtech Range

How To Add Device To VMS Lite By Serial Number

domar.com

How To Add Device To VMS Lite By Serial Number

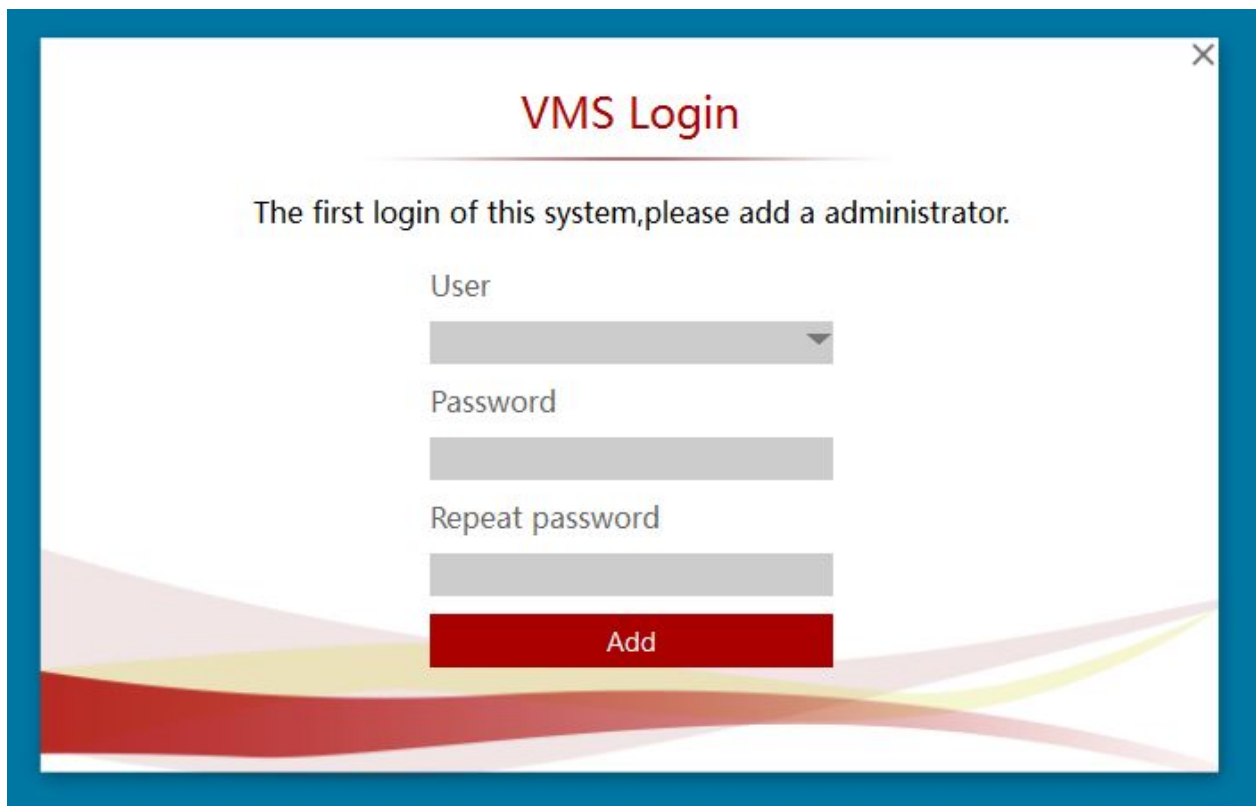
1. First we need to install VMS Lite to your PC/Laptop

Please follow link below to download software:

https://domar.com/download/TECH_PAGES_FILES/MINI_NVR/CMS-VMS-software/VMSLite_Setup_2018_8.2.19.3.exe

After installation please run software.

2. When you run VMS Lite for the first time you will be asked to create new user and password for it.

The image shows a screenshot of a software window titled "VMS Login". The window has a blue border and a close button (X) in the top right corner. Inside the window, the text "VMS Login" is displayed in red at the top. Below it, a message says "The first login of this system, please add a administrator." in black. There are three input fields: "User" (a dropdown menu), "Password" (a text field), and "Repeat password" (a text field). Below these fields is a red button labeled "Add". The background of the window features a decorative wavy pattern in shades of red, yellow, and white.

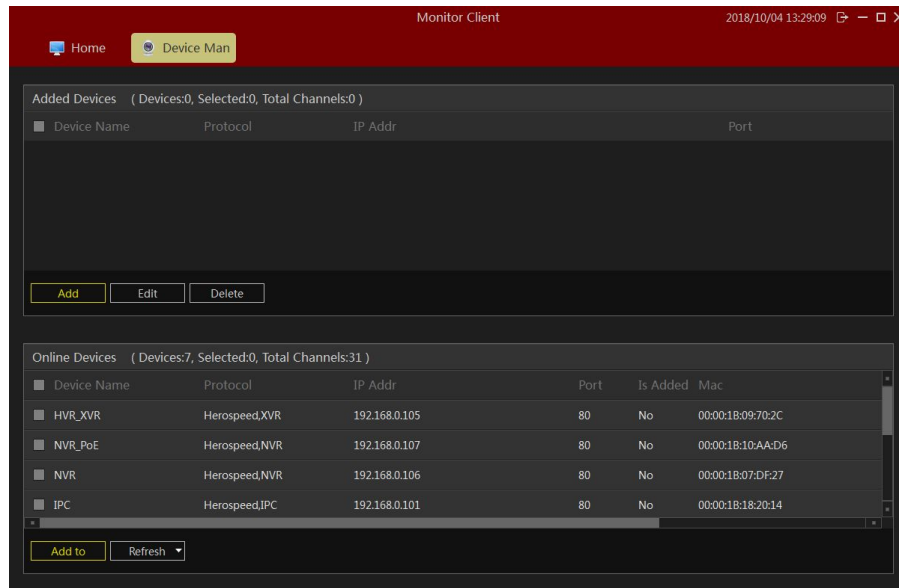
!NOTE!

Our recommendation will be something that you can easy to remember like:

User: **admin**

Password: **12345**

3. After creating account we can add your device to VMS Lite. Please click on “**Device**”. You should see this:

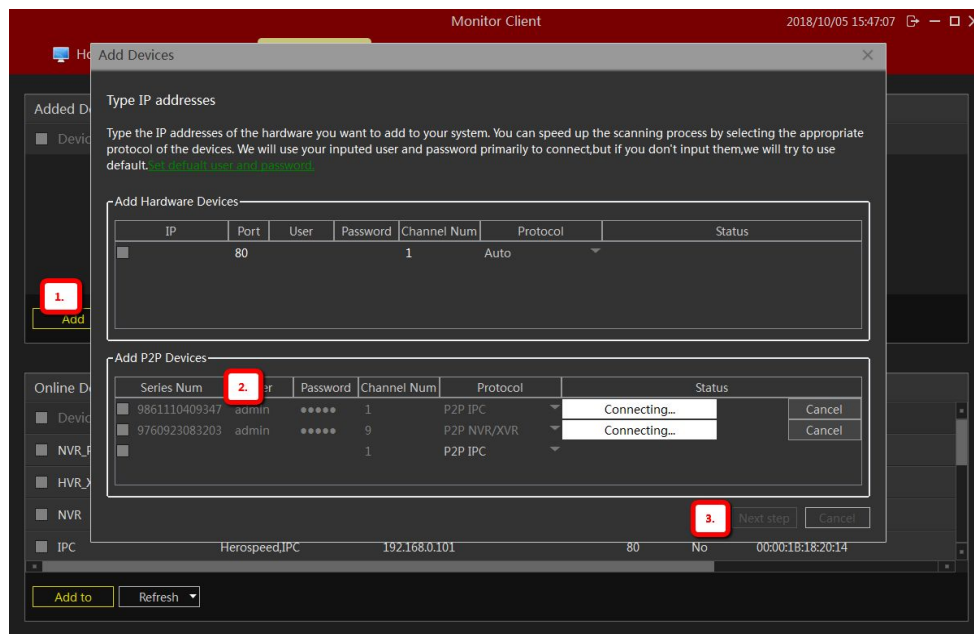


4. Please click “**Add**” button to add your device to VMS Lite (1.). Enter device serial number, username and password for your device (2.). From drop-down menu select what kind of device you are adding to VMS Lite. Please make sure you choose correct protocol for your device and enter correct number of channels it using. When you ready click “**Next Step**” and “**Add**” (3.).

!NOTE!

Please remember that default password for your devices are:

NVR: admin & 12345 **CAMERA:** admin & admin



!NOTE!

-Add P2P Devices-						
Series Num	User	Password	Channel Num	Protocol	Status	
<input checked="" type="checkbox"/> 9861110409347	admin	•••••	1	P2P IPC	Connect ok	
<input type="checkbox"/> 9760923083203	admin	•••••	9	P2P NVR/XVR	Connect failed	
<input type="checkbox"/>			1	P2P IPC		

If you make a mistake entering password or username please retype it again and click “**Try Again**”. Now it should connect to your device successfully.

!NOTE!

Places to find your serial number:

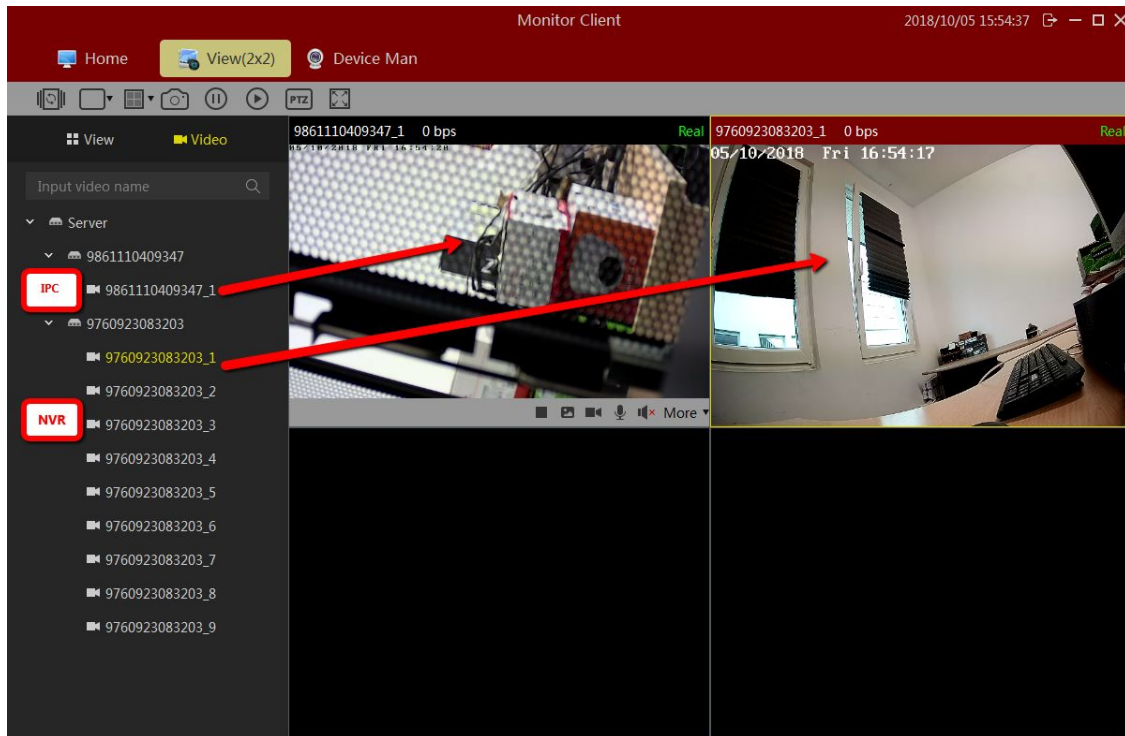
CAMERA



RECORDER



5. After adding your device you can go back to “Home” at the top of the VMS Lite. Choose “Live” option. On left you will see list of your devices. In our example we add two - One NVR and one Camera. Like you see in the picture below each devices have specific channels number. Camera have only one channel and NVR in this example have 9. To see live footage you need to click on the specific channel number you want to see and drag it to one of the window.



Hope this will help. If you need any more questions please email us on techsupport@domar.com

Domar Technical Support